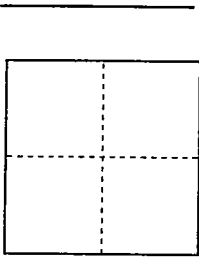


CORNER RECORD

City of _____ Document Number 04-45
County of San Joaquin, California

Brief Legal Description A portion of the west 1/2 of Section 19, Township 2 North, Range 8 East, Mount Diablo Base and Meridian. Northeast corner of Parcel A of Parcel Map 4-93.



CORNER TYPE

- Government Corner Control
- Meander Property
- Rancho Other

Date of Survey December 3, 2004

COORDINATES (Optional)

N. _____
 E. _____
 Zone _____ NAD27 NAD83
 NAD83 Epoch _____
 Elev. _____
 Vert. Datum: NGVD29 NAVD88
 Meas. Units: Metric Imperial

Corner - Left as found Found and tagged Established Reestablished Rebuilt

Identification and type of corner found: Evidence used to identify or procedure used to establish or reestablish the corner:
Found monuments off of a filed parcel map.

A description of the physical condition of the monument as found and as set or reset:
All monuments found were in satisfactory condition. Set 3/4" x 30" iron rod capped L.S. 7269.

SURVEYOR'S STATEMENT

This Corner Record was prepared by me or under my direction in conformance with the Land Surveyors' Act on December 3, 2004

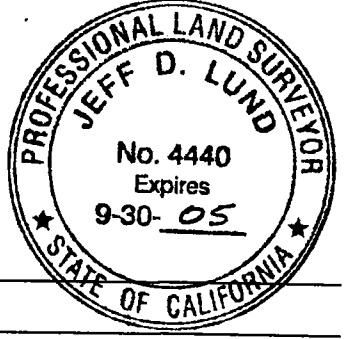
Signed [Signature] L.S..Number 7269



COUNTY SURVEYOR'S STATEMENT

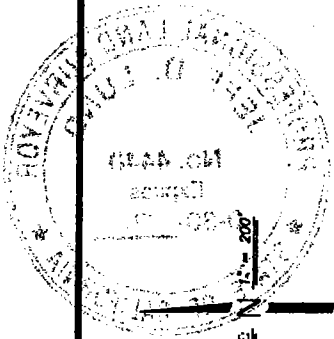
This Corner Record was received DECEMBER 27, 2004 and examined and filed DECEMBER 31, 2004.

Signed [Signature] P.L.S. No. 4440
Title Assistant County Surveyor

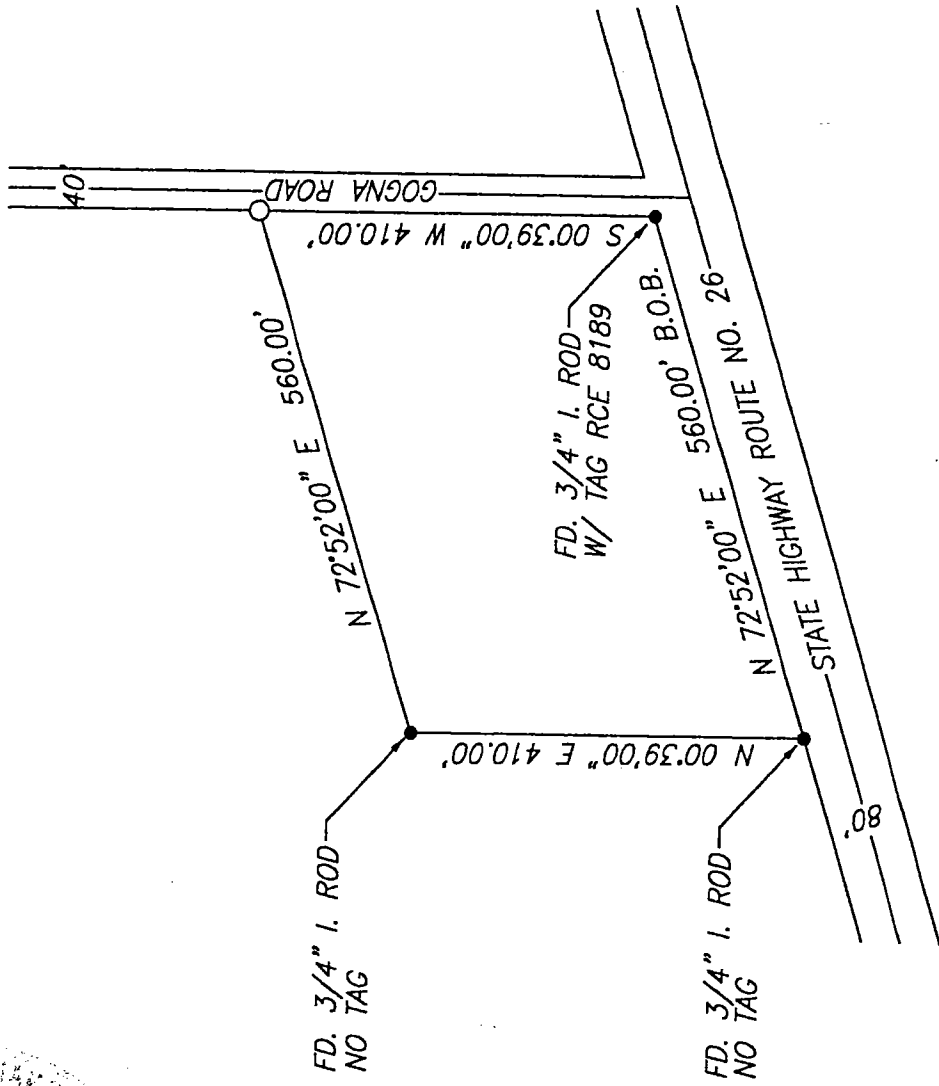


County Surveyor's Comment _____

(D.D. Sheet No. 25)



SCALE: 1" = 200'



LEGEND

- FD. FOUND
- I.R. IRON ROD
- SET 3/4" x 30" I.R. CAPPED L.S. 7269 BASIS OF BEARINGS
- B.O.B. MEASURED
- (M) MEASURED
- P.M. PARCEL MAP

NOTE: ALL BEARINGS, DISTANCES, AND FOUND MON.S ARE BASED ON PARCEL MAP 4-93.