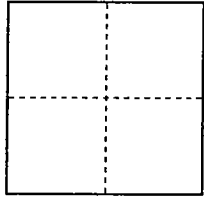


**CORNER RECORD**

City of \_\_\_\_\_ Document Number 04-44  
County of San Joaquin, California

Brief Legal Description Southeast corner of Lot 13, "Foley Tract" Volume 7 of Maps and Plats, Page 3  
San Joaquin County Records.



**CORNER TYPE**

Government Corner  Control   
Meander  Property   
Rancho  Other

Date of Survey June 21, 2001

**COORDINATES (Optional)**

N. \_\_\_\_\_  
E. \_\_\_\_\_  
Zone \_\_\_\_\_ NAD27  NAD83   
NAD83 Epoch \_\_\_\_\_  
Elev. \_\_\_\_\_  
Vert. Datum: NGVD29  NAVD88   
Meas. Units: Metric  Imperial

**Corner -** Left as found  Found and tagged  Established  Reestablished  Rebuilt

Identification and type of corner found: Evidence used to identify or procedure used to establish or reestablish the corner:  
Found the nearest monuments east and west of the missing monument at the corner as shown on  
P.M. 18-190, San Joaquin County Records. I used these monuments to reestablish the missing corner  
monument at the corner. (See sketch on backside)

A description of the physical condition of the monument as found and as set or reset:  
Set 3/4" x 30" iron ron capped L.S. 7269.

**SURVEYOR'S STATEMENT**

This Corner Record was prepared by me or under my direction in conformance with  
the Land Surveyors' Act on June 21, 2001.

Signed [Signature] L.S..Number 7269

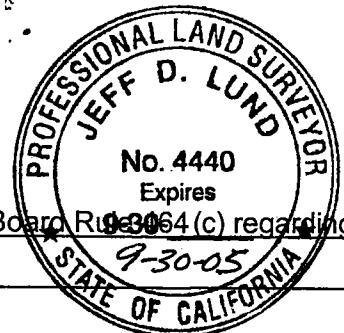


**COUNTY SURVEYOR'S STATEMENT**

This Corner Record was received DECEMBER 27, 2004 and examined  
and filed DECEMBER 31, 2004.

Signed [Signature] P.L.S. No. 4440

Title Assistant County Surveyor



**County Surveyor's Comment** This corner record is not in compliance with Board Resolution 93064 (c) regarding  
filing within 90 days of date of survey.

(D.D. Sheet No. 39 )

SCALE: N 1" = 300'

NOTE: THE MONUMENT SET IS THE SOUTH CORNER OF LOT 13 AND 12 AS SHOWN ON (R1) NOT THE MONUMENT SHOWN AS 1.19' FROM SAID CORNER. CONTROLLING ELEMENTS OF (R1) WERE USED TO DETERMINE ITS LOCATION

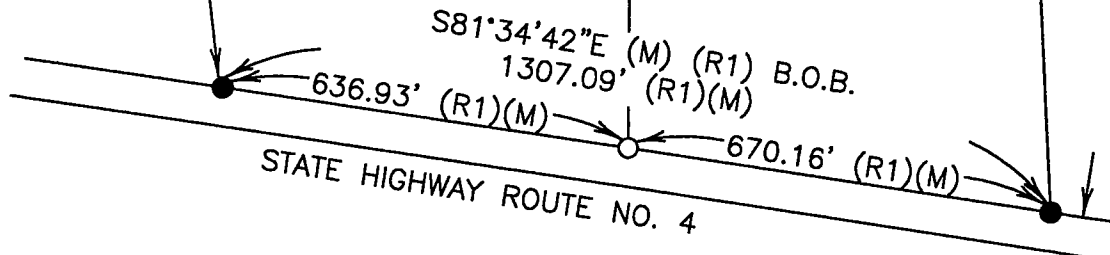
LOT 13  
M&P 7-3

LOT 12  
M&P 7-3

FD. 3/4" IRON PIN  
TAGGED R.C.E. 1014  
(R1)

FD. 3/4" I.P.  
TAGGED R.C.E. 1014  
(R1)

FD. 3/4" I.P.  
CAPPED P.L.S. 4858  
(R1)



LEGEND

REFERENCES

- FD. FOUND
- I.R. IRON ROD
- I.P. IRON PIPE
- SET 3/4"x30" I.R.
- CAPPED L.S. 7269
- B.O.B. BASIS OF BEARINGS
- (M) MEASURED
- M & P MAPS AND PLATS
- P.M. PARCEL MAP

- (R1) P.M. 18-190
- (R2) P.M. 2-91