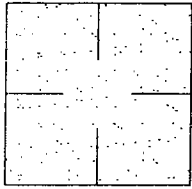


CORNER RECORD

Document Number 04-40
County of San Joaquin, California

City of _____

Brief Legal Description DUNCAN ROAD INTERSECTION OF TOBACCO ROAD



CORNER TYPE

- Government Corner Control
- Meander Property
- Rancho Other

Date of Survey June 4, 2002

COORDINATES (Optional)

N. _____
 E. _____
 Zone _____ NAD27 NAD83
 NAD83 Epoch _____
 Elev. _____
 Vert. Datum: NGVD29 NAVD88
 Meas. Units: Metric Imperial

Corner - Left as found Found and tagged Established Reestablished Rebuilt

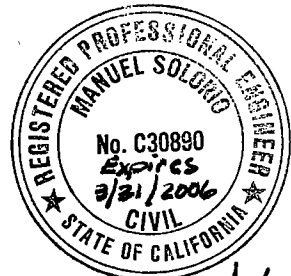
Identification and type of corner found: Evidence used to identify or procedure used to establish or reestablish the corner:
SEE SKETCH ON BACKSIDE.

A description of the physical condition of the monument as found and as set or reset:
FOUND MONUMENT IN GOOD CONDITION. SEE SKETCH ON BACKSIDE.

SURVEYOR'S STATEMENT

This Corner Record was prepared by me or under my direction in conformance with the Land Surveyors' Act on Dec 9, 2004.

Signed Manuel Solerio R.C.E. Number C30890



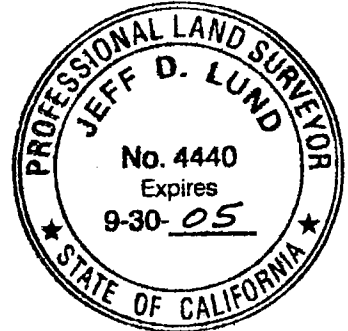
Manuel Solerio

COUNTY SURVEYOR'S STATEMENT

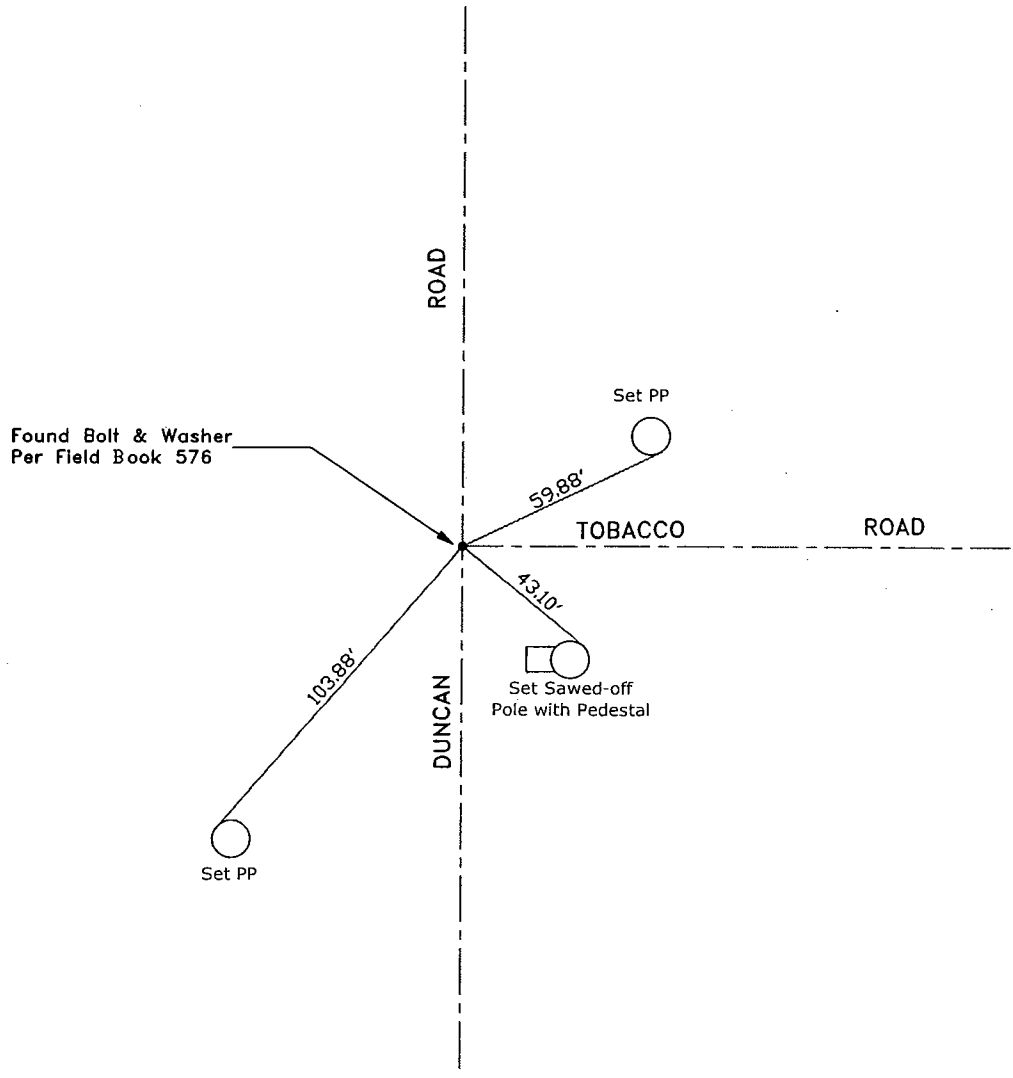
This Corner Record was received DEC. 13, 2004 and examined and filed DECEMBER 14, 2004.

Signed Jeff Lund P.L.S. No. 4440

Title Assistant County Surveyor



County Surveyor's Comment _____
THIS CORNER RECORD IS NOT IN COMPLIANCE WITH BOARD RULE 464(c)
REGARDING SUBMITTAL WITHIN 90 DAYS FROM THE DATE OF SURVEY.



"No Attempt Was Made to Verify Monument(s)"

- FP=Fence Post
- GP=Guy Post
- JP=Joint Pole
- PP=Power Pole
- SP=Service Pole
- TP=Telephone Pole
- N.T.S.=Not to Scale
- Set=Conc. Nails with Brass Washers Stamped
"S.J. Co.", unless otherwise noted
- Found=Nail with Shiner, unless otherwise noted
- Note: Found Monuments are not Tagged nor of
Record unless otherwise noted.