

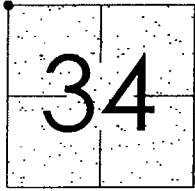
CORNER RECORD

Docum: Number 04-37
County of San Joaquin, California

City of _____

Brief Legal Description DUNCAN ROAD INTERSECTION OF MILTON ROAD

NW CORNER OF SECTION 34, T.2N, R.8E



CORNER TYPE

Government Corner Control
Meander Property
Rancho Other
Date of Survey June 4, 2002

COORDINATES (Optional)

N. _____
E. _____
Zone _____ NAD27 NAD83
NAD83 Epoch _____
Elev. _____
Vert. Datum: NGVD29 NAVD88
Meas. Units: Metric Imperial

Corner - Left as found Found and tagged Established Reestablished Rebuilt

Identification and type of corner found: Evidence used to identify or procedure used to establish or reestablish the corner:
SEE SKETCH ON BACKSIDE.

A description of the physical condition of the monument as found and as set or reset:
FOUND MONUMENT IN GOOD CONDITION. SEE SKETCH ON BACKSIDE.

SURVEYOR'S STATEMENT

This Corner Record was prepared by me or under my direction in conformance with the Land Surveyors' Act on Dec 9, 2004.

Signed Manuel Solario R.C.E. Number C30890



Manuel Solario

COUNTY SURVEYOR'S STATEMENT

This Corner Record was received DEC. 13, 2004 and examined and filed DECEMBER 14, 2004.

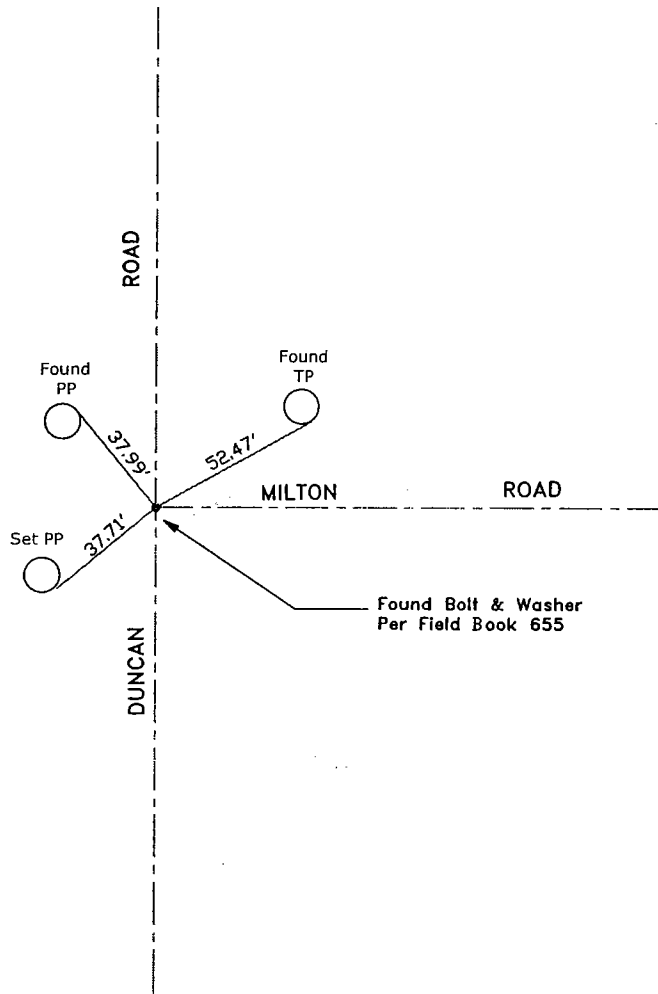
Signed Jeff Lund P.L.S. No. 4440

Title Assistant County Surveyor



County Surveyor's Comment _____

THIS CORNER RECORD IS NOT IN COMPLIANCE WITH BOARD RULE 464(c) REGARDING SUBMITTAL WITHIN 90 DAYS FROM THE DATE OF SURVEY.



"No Attempt Was Made to Verify Monument(s)"

FP=Fence Post

GP=Guy Post

JP=Joint Pole

PP=Power Pole

SP=Service Pole

TP=Telephone Pole

N.T.S.=Not to Scale

Set=Conc. Nails with Brass Washers Stamped

"S.J. Co.", unless otherwise noted

Found=Nail with Shiner, unless otherwise noted

Note: Found Monuments are not Tagged nor of

Record unless otherwise noted.