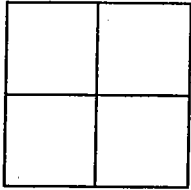


CORNER RECORD

Document Number 04-34

City of STOCKTON County of SAN JOAQUIN, California

Brief Legal Description BOOK 32 OF SURVEYS, PAGE 49, SAN JOAQUIN COUNTY RECORDS.



CORNER TYPE

Government Corner Control
 Meander Property
 Rancho Other
 Date of Survey 10-08-04

COORDINATES (Optional)

N. 2153221.945
 E. 6324289.527
 Zone 3 NAD27 NAD83
 NAD83 Epoch 1991.35
 Elev. 20.47
 Vert. Datum: NGVD29 NAVD88
 Meas. Units: Metric Imperial

Corner - Left as found Found and tagged Established Reestablished Rebuilt

Identification and type of corner found: Evidence used to identify or procedure used to establish or reestablished the corner: **FOUND 2 1/2" BRASS DISK STAMPED "10S-9 RESET 05-03" IN MONUMENT BOX MARKING THE CITY OF STOCKTON CONTROL MONUMENT AS SHOWN FOR RECORD IN BOOK 32 OF SURVEYS AT PAGE 49, SAN JOAQUIN COUNTY RECORDS.**

COORDINATES SHOWN ABOVE ARE BASED ON BOOK 33 OF SURVEYS AT PAGE 20. ELEVATION SHOWN IS BASED ON THE CITY OF STOCKTON PUBLISHED BENCHMARK LISTING REVISED APRIL 2003.

A description of the physical condition of the monument as found and as set or reset: **THE MONUMENT WAS LEFT AS FOUND AND VERIFIED USING THE SWING TIES AS SHOWN FOR RECORD IN BOOK 32 OF SURVEYS AT PAGE 49 AND AS SHOWN ON SKETCH.**

SURVEYOR'S STATEMENT

This Corner Record was prepared by me or under my direction in conformance with the Land Surveyors' Act on OCTOBER 13, 2004.

Signed [Signature] L.S. 6953



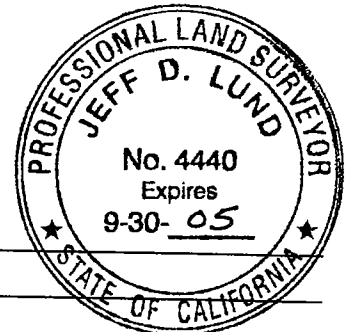
COUNTY SURVEYOR'S STATEMENT

This Corner Record was received NOVEMBER 3, 2004 and examined and filed NOVEMBER 9, 2004.

Signed [Signature] P.L.S. No. 4440

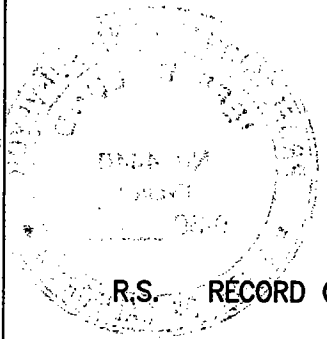
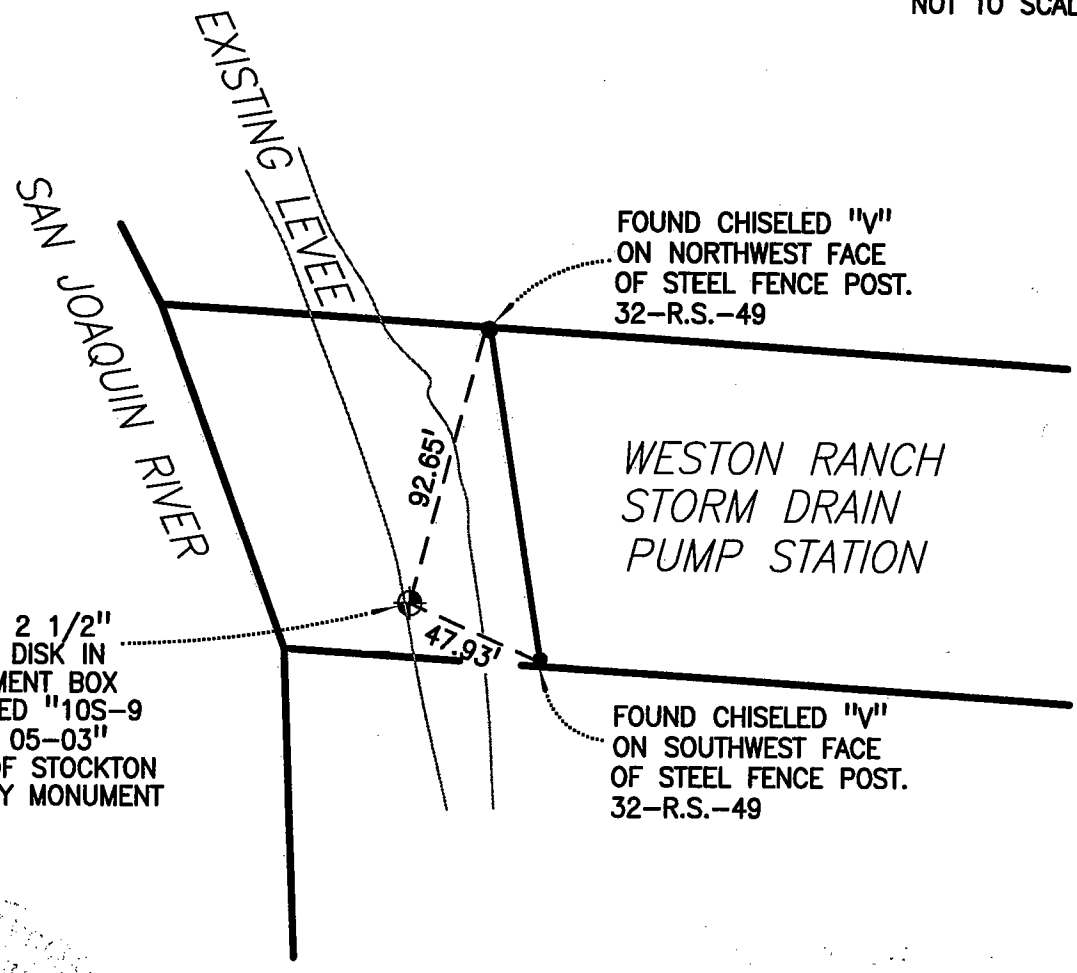
Title ASSISTANT COUNTY SURVEYOR

County Surveyor's Comment _____





NOT TO SCALE



R.S. RECORD OF SURVEY