

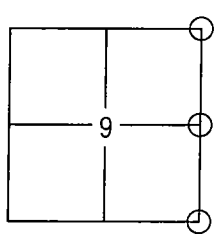
CORNER RECORD

Document Number 04-32

City of _____

County of SAN JOAQUIN, California

Brief Legal Description SECTION 9, T2S, R4E, MDM



CORNER TYPE

Government Corner Control
 Meander Property
 Rancho Other
 Date of Survey JULY 1, 2004

COORDINATES(Optional)

N. _____
 E. _____
 Zone NAD27 NAD83
 NAD83 Epoch _____
 Elev. _____
 Vert. Datum: NGVD29 NADV88
 Meas. Units: Metric Imperial

Corner - Left as found Found and tagged Established Reestablished Rebuilt

Identification and type of corner found: Evidence used to identify or procedure used to establish or reestablish the corner:

TIES SHOWN FROM MONUMENTS PER TRACT 2924 (36 M&P 54).

A description of the physical condition of the monument as found and as set or reset: TIES SHOWN FOR MONUMENTS THAT WILL BE OBLITERATED BY SCHEDULED CONSTRUCTION.

SURVEYOR'S STATEMENT

This Corner Record was prepared by me or under my direction in conformance with the Land Surveyors' Act on September 21, 2004.

Signed Paul A. Kittredge ~~Surveyor No. _____~~ P.L.S. NO. 5790



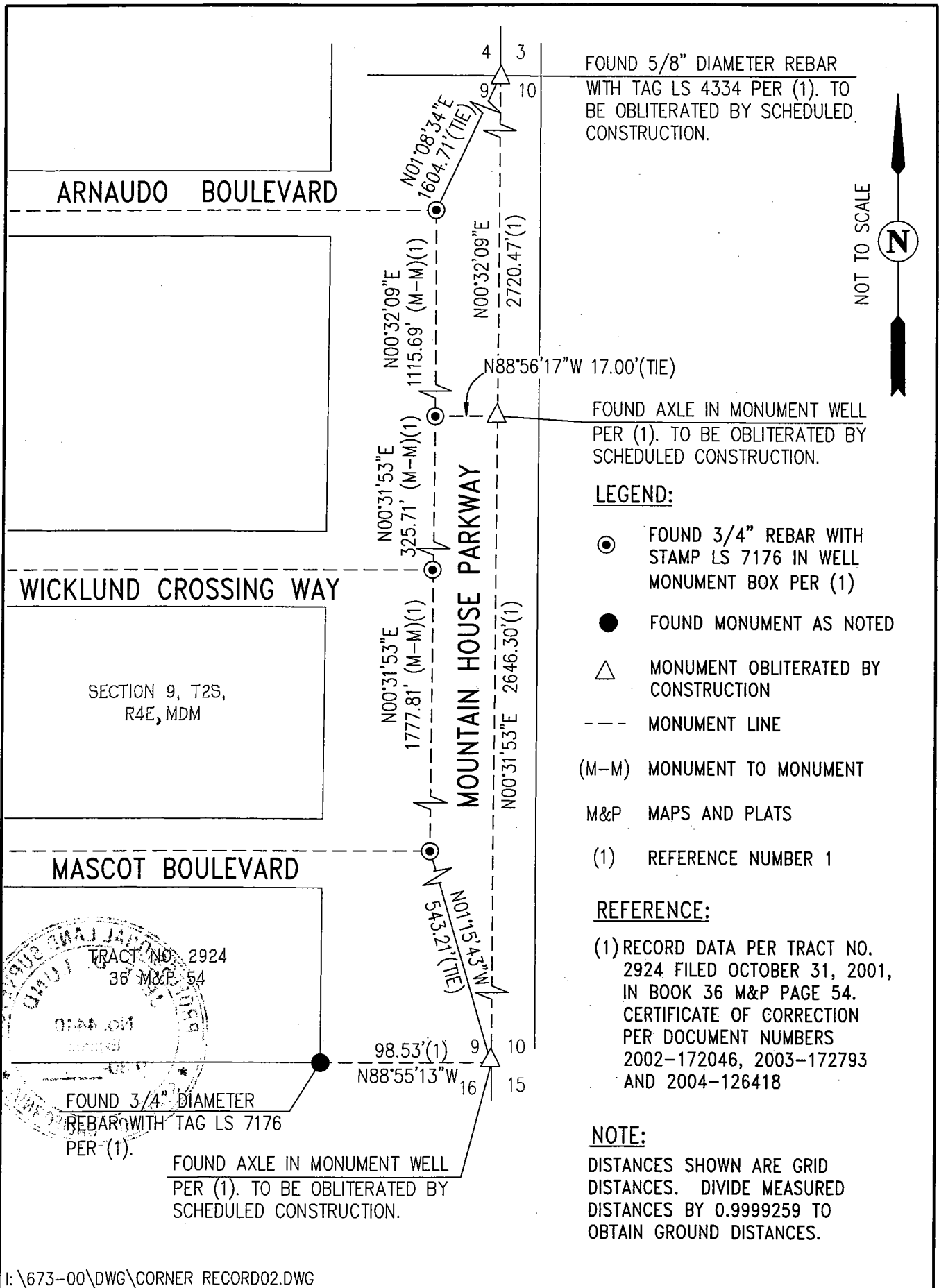
COUNTY SURVEYOR'S STATEMENT

This Corner Record was received September 22, 2004 and examined and filed September 24, 2004.

Signed J. D. Lund P.L.S. ~~No. _____~~ No.: 4440
 Title Assistant County Surveyor



County Surveyor's Comment _____



LEGEND:

- FOUND 3/4" REBAR WITH STAMP LS 7176 IN WELL MONUMENT BOX PER (1)
- FOUND MONUMENT AS NOTED
- △ MONUMENT OBLITERATED BY CONSTRUCTION
- MONUMENT LINE
- (M-M) MONUMENT TO MONUMENT
- M&P MAPS AND PLATS
- (1) REFERENCE NUMBER 1

REFERENCE:

(1) RECORD DATA PER TRACT NO. 2924 FILED OCTOBER 31, 2001, IN BOOK 36 M&P PAGE 54. CERTIFICATE OF CORRECTION PER DOCUMENT NUMBERS 2002-172046, 2003-172793 AND 2004-126418

NOTE:

DISTANCES SHOWN ARE GRID DISTANCES. DIVIDE MEASURED DISTANCES BY 0.9999259 TO OBTAIN GROUND DISTANCES.