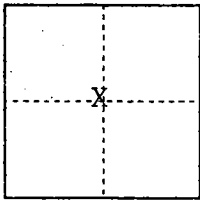


CORNER RECORD

City of Tracy

Document Number 04-31
County of San Joaquin, California

Brief Legal Description Center of Section 34, T.2.S., R.5 E., Mount Diablo Base and Meridian



Section 34

CORNER TYPE

- Government Corner Control
- Meander Property
- Rancho Other

Date of Survey January 25, 2000

COORDINATES (Optional)

- N. _____
- E. _____
- Zone _____ NAD27 NAD83
- NAD83 Epoch _____
- Elev. _____
- Vert. Datum: NGVD29 NAVD88
- Meas. Units: Metric Imperial

Corner - Left as found Found and tagged Established Reestablished Rebuilt

Identification and type of corner found: Evidence used to identify or procedure used to establish or reestablish the corner: Found 1" Iron Pipe, "tagged RCE 14901," as set for center of Section 34, per Record of Survey filed for record in book 20 of surveys, at page 108. Surveyed Section 34, accepted as center of Section 34 with the mapping of tract no. 2901 Elissagaray Ranch Unit No. 1, filed for record April 21, 2000 in book 34 of Maps and Plats, at page 98, S.J.C.R.

A description of the physical condition of the monument as found and as set or reset: Found in good condition. Set two (2) 3/4" Iron Pipes tagged "RCE 32158," as witness corners. Set witness corners prior to property line fence construction.

(see exhibit on reverse side)

SURVEYOR'S STATEMENT

This Corner Record was prepared by me or under my direction in conformance with the Land Surveyors' Act on Sept. 01, 2004.

Signed Dan R. Schack ~~ES.~~ R.C.E. Number 32158

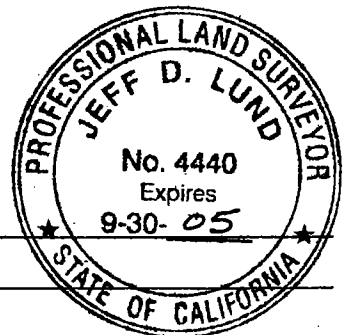


COUNTY SURVEYOR'S STATEMENT

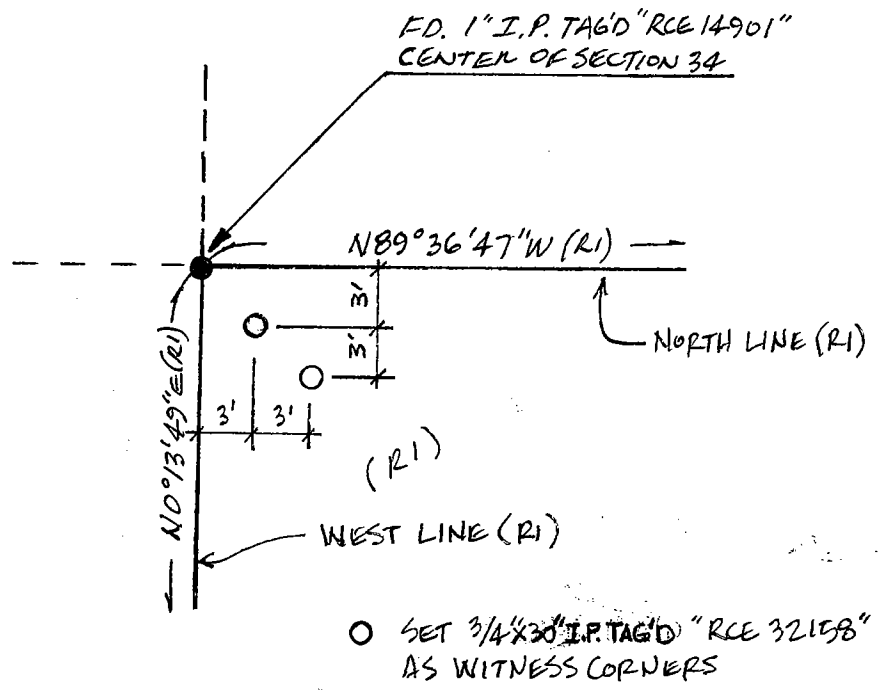
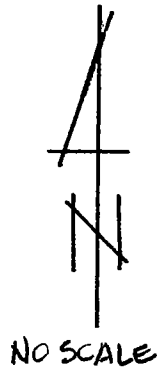
This Corner Record was received SEPTEMBER 3, 2004 and examined and filed SEPTEMBER 9, 2004.

Signed [Signature] P.L.S. No. 4440

Title Assistant County Surveyor



County Surveyor's Comment THIS CORNER RECORD IS NOT IN COMPLIANCE WITH BOARD RULE 464(c) REGARDING THE 90-DAY SUBMITTAL REQUIREMENT.



(R1) TRACT NO. 2901 ELISSAGARY RANCH
UNIT NO. 1, MAPS & PLATS BOOK 34,
PAGE 98, S.J.C.P.