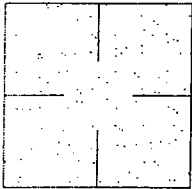


CORNER RECORD

Document Number 04-28  
County of San Joaquin, California

City of \_\_\_\_\_

Brief Legal Description JAHANT ROAD 1321' ± W/O DUSTIN ROAD



CORNER TYPE

- Government Corner  Control
- Meander  Property
- Roncho  Other

Date of Survey March 10, 2003

COORDINATES (Optional)

N. \_\_\_\_\_  
 E. \_\_\_\_\_  
 Zone \_\_\_\_\_ NAD27  NAD83   
 NAD83 Epoch \_\_\_\_\_  
 Elev. \_\_\_\_\_  
 Vert. Datum: NGVD29  NAVD88   
 Meas. Units: Metric  Imperial

Corner - Left as found  Found and tagged  Established  Reestablished  Rebuilt

identification and type of corner found: Evidence used to identify or procedure used to establish or reestablish the corner:  
SEE SKETCH ON BACKSIDE.

A description of the physical condition of the monument as found and as set or reset:  
FOUND MONUMENT IN GOOD CONDITION. SEE SKETCH ON BACKSIDE.

SURVEYOR'S STATEMENT

This Corner Record was prepared by me or under my direction in conformance with the Land Surveyors' Act on July 27, 2004.

Signed Manuel Solorio R.C.E. Number C30890

COUNTY SURVEYOR'S STATEMENT

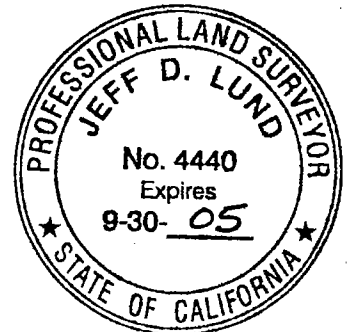
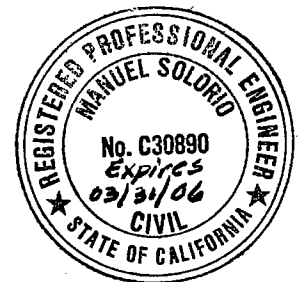
This Corner Record was received JULY 28, 2004 and examined and filed JULY 29, 2004.

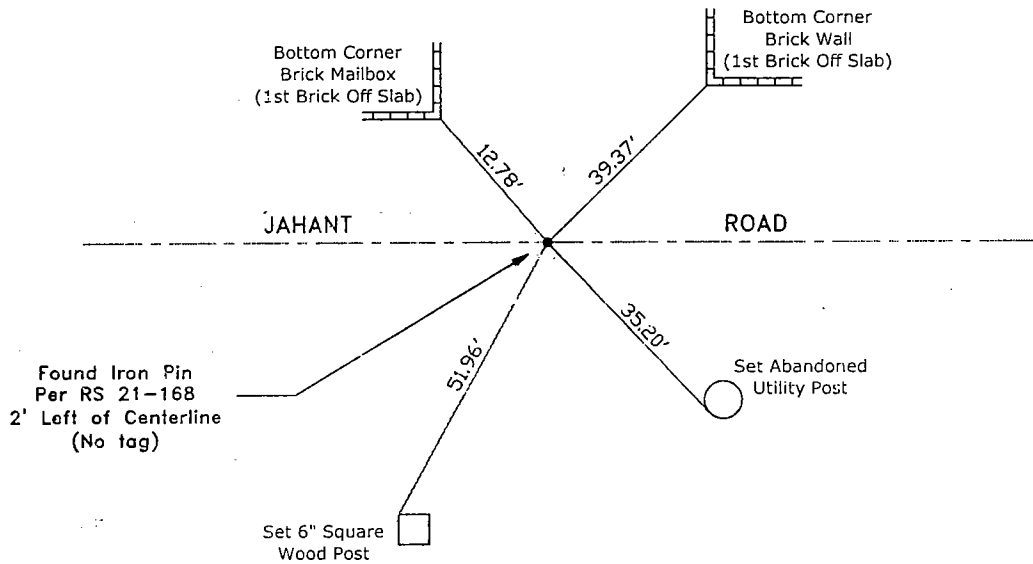
Signed Jeff D. Lund P.L.S. No. 4440

Title Assistant County Surveyor

County Surveyor's Comment

THIS CORNER RECORD IS NOT IN COMPLIANCE WITH BOARD RULE 464(C) REGARDING SUBMITTAL WITHIN 90 DAYS FROM THE DATE OF SURVEY.





"No Attempt Was Made to Verify the Monument(s)"

- FP= Fence Post
- GP=Guy Post
- JP=Joint Pole
- PP=Power Pole
- SP=Service Pole
- TP=Telephone Pole
- N.T.S.=Not To Scale
- Set=Conc. Nails with Brass Washers Stamped "S.J. Co.", unless otherwise noted