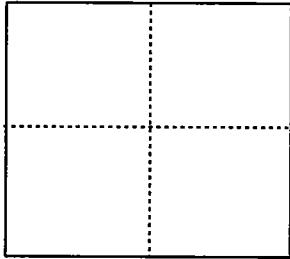


**CORNER RECORD**

City of \_\_\_\_\_ Document Number 04-14  
County of San Joaquin, California

Brief Legal Description Southeast Corner, Parcel 3 per Record of Survey Book 21, Page 75, San Joaquin County  
Records.



**CORNER TYPE**

- Government Corner  Control
- Meander  Property
- Rancho  Other

Date of Survey July 17, 2003

**COORDINATES (Optional)**

- N. \_\_\_\_\_
- E. \_\_\_\_\_
- Zone \_\_\_\_\_ NAD27  NAD83
- NAD83 Epoch \_\_\_\_\_
- Elev. \_\_\_\_\_
- Vert. Datum: NGVD29  NAVD88
- Meas. Units: Metric  Imperial

Corner - Left as found  Found and tagged  Established  Reestablished  Rebuilt

Identification and type of corner found: Evidence used to identify or procedure used to establish or reestablish the corner:  
The survey monument destroyed at this location was re-established using the ties shown on CR-03-01, S.J.C.R.

A description of the physical condition of the monument as found and as set or reset: \_\_\_\_\_

- Indicates Found Monument as noted.
- Indicates set 3/4" x 30" Iron Pipe Tagged L.S. 4450.

**SURVEYOR'S STATEMENT**

This Corner Record was prepared by me or under my direction in conformance with  
the Land Surveyor's Act on July 28, 2003.

Signed Michael L. Quarteroni L.S. Number 4450



**COUNTY SURVEYOR'S STATEMENT**

This Corner Record was received AUGUST 6, 2003 and examined  
and filed JUNE 25, 2004.

Signed Jeff D. Lund L.S. Number 4440

Title Asst. County Surveyor

County Surveyor's Comment \_\_\_\_\_

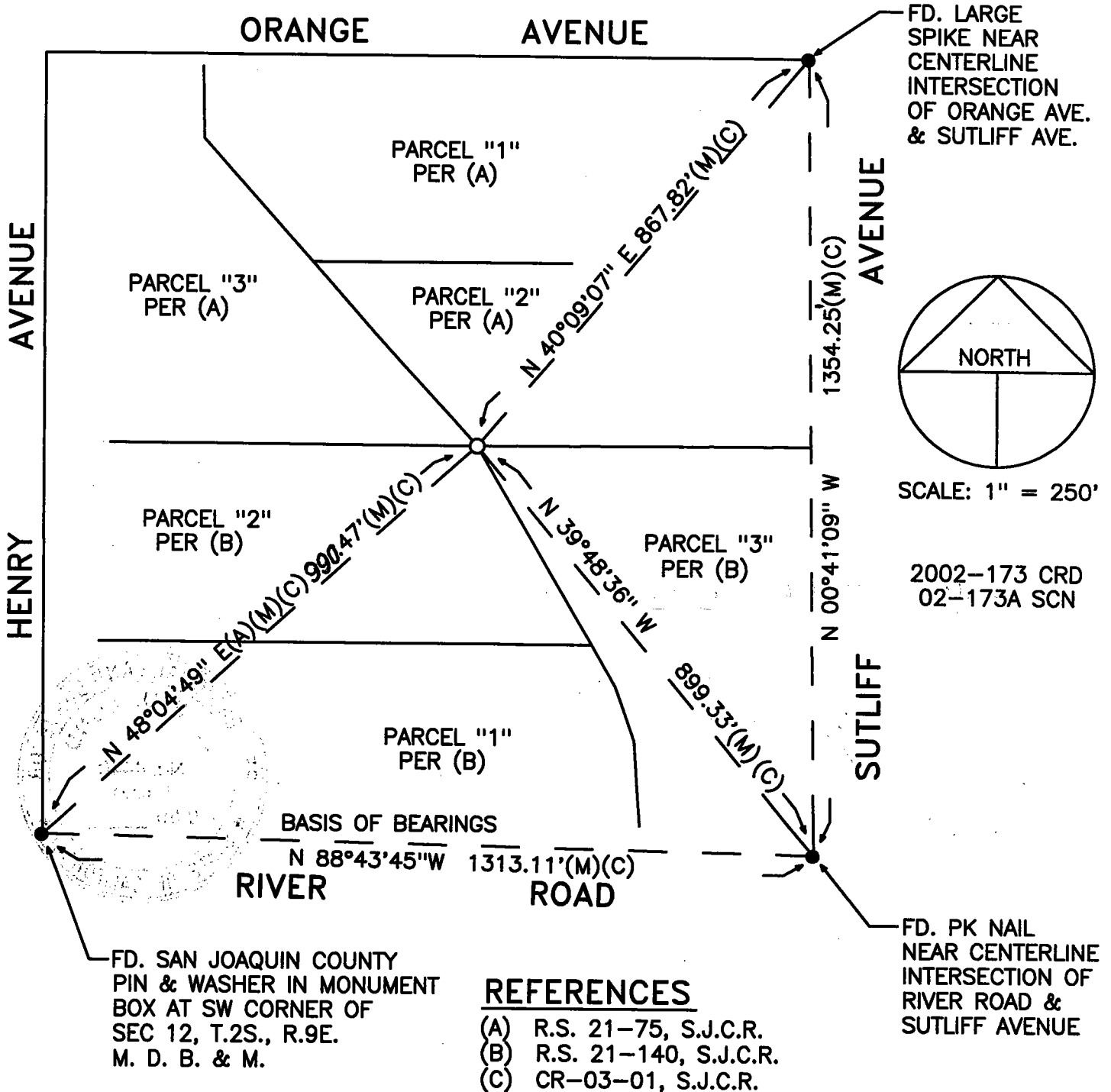


# LEGEND

- FD. INDICATES FOUND ON THIS SURVEY
- S.F.N. INDICATES SEARCHED, FOUND NOTHING
- R.S. INDICATES RECORD OF SURVEY, BOOK AND PAGE, S.J.C.R.
- S.J.C.R. INDICATES SAN JOAQUIN COUNTY RECORDS
- (M) INDICATES MEASURED

# BASIS OF BEARINGS

THE BEARING BETWEEN THE SW CORNER OF SECTION 12, T.2S., R.9E., M.D.B.& M. AND THE FOUND PK NAIL NEAR THE CENTERLINE INTERSECTION OF RIVER ROAD AND SUTLIFF AVE. BEARS N 88°43'45" W PER CR-03-01, S.J.C.R.



# REFERENCES

- (A) R.S. 21-75, S.J.C.R.
- (B) R.S. 21-140, S.J.C.R.
- (C) CR-03-01, S.J.C.R.