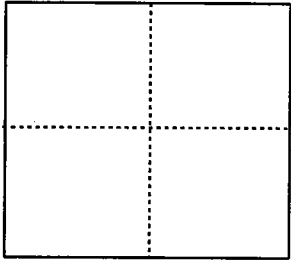


CORNER RECORD

City of _____ Document Number 04-13
County of San Joaquin, California

Brief Legal Description Northwest Corner, Parcel 2 per Record of Survey Book 21, Page 75, San Joaquin County
Records.



CORNER TYPE

- Government Corner Control
- Meander Property
- Rancho Other

Date of Survey July 17, 2003

COORDINATES (Optional)

N. _____
 E. _____
 Zone _____ NAD27 NAD83
 NAD83 Epoch _____
 Elev. _____
 Vert. Datum: NGVD29 NAVD88
 Meas. Units: Metric Imperial

Corner - Left as found Found and tagged Established Reestablished Rebuilt

Identification and type of corner found: Evidence used to identify or procedure used to establish or reestablish the corner:
The survey monument destroyed at this location was re-established using the ties shown on CR-03-02, S.J.C.R.

A description of the physical condition of the monument as found and as set or reset: _____
 ● Indicates Found Monument as noted.
 ○ Indicates set 3/4" x 30" Iron Pipe Tagged L.S. 4450.

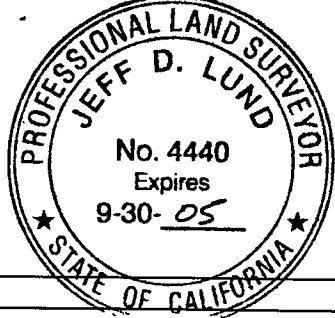
SURVEYOR'S STATEMENT

This Corner Record was prepared by me or under my direction in conformance with
 the Land Surveyor's Act on July 28, 2003.
 Signed Michael L. Quartaroli L.S. Number 4450



COUNTY SURVEYOR'S STATEMENT

This Corner Record was received August 6, 2003 and examined
 and filed JUNE 25, 2004.
 Signed Jeff D. Lund L.S. Number 4440
 Title Asst. County Surveyor



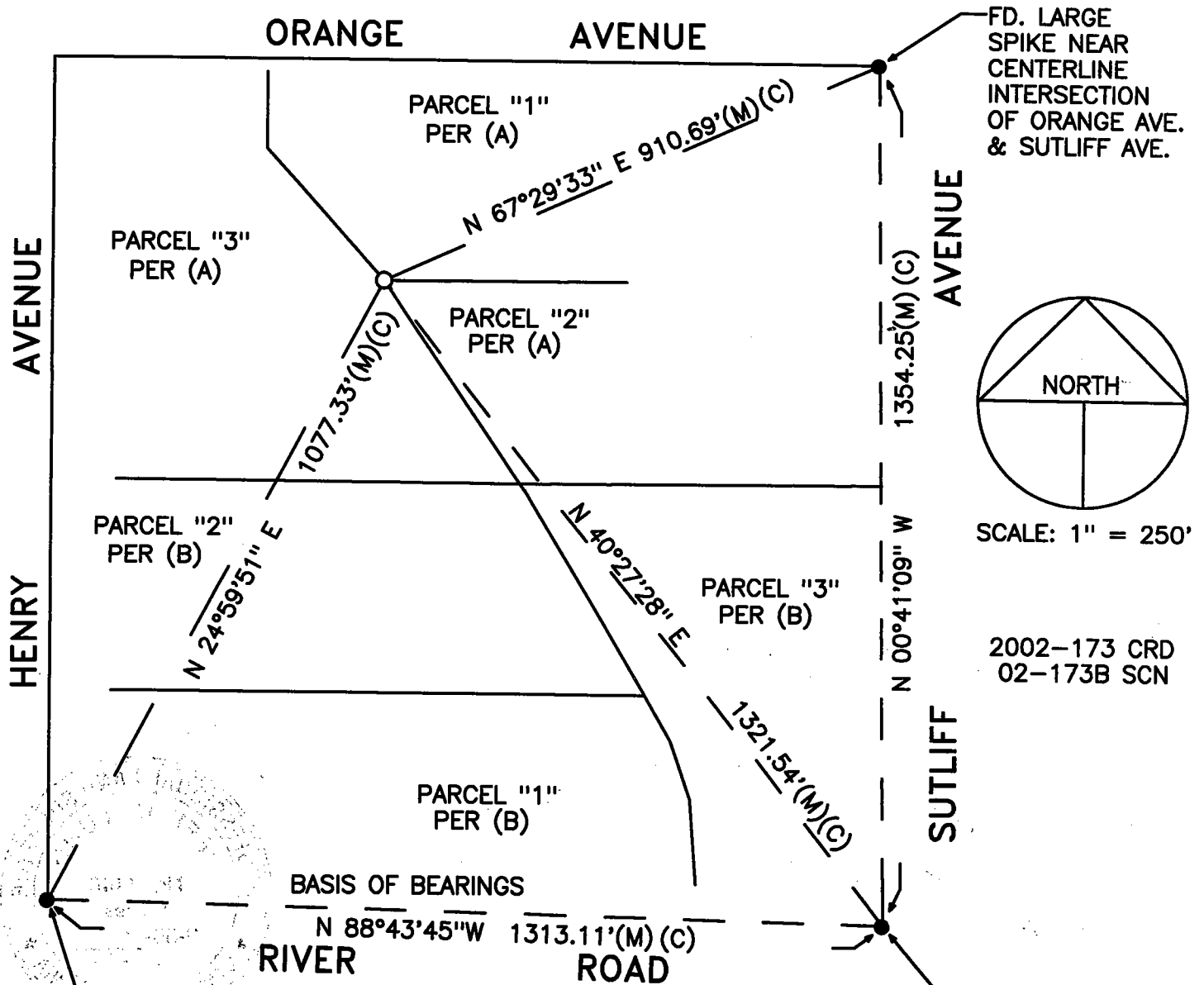
County Surveyor's Comment _____

LEGEND

- FD. INDICATES FOUND ON THIS SURVEY
- S.F.N. INDICATES SEARCHED, FOUND NOTHING
- R.S. INDICATES RECORD OF SURVEY, BOOK AND PAGE, S.J.C.R.
- S.J.C.R. INDICATES SAN JOAQUIN COUNTY RECORDS
- (M) INDICATES MEASURED

BASIS OF BEARINGS

THE BEARING BETWEEN THE SW CORNER OF SECTION 12, T.2S., R.9E., M.D.B.& M. AND THE FOUND PK NAIL NEAR THE CENTERLINE INTERSECTION OF RIVER ROAD AND SUTLIFF AVE. BEARS N 88°43' 45" W PER CR-03-02, S.J.C.R



REFERENCES

- (A) R.S. 21-75, S.J.C.R.
- (B) R.S. 21-140, S.J.C.R.
- (C) CR-03-02, S.J.C.R.

FD. SAN JOAQUIN COUNTY
PIN & WASHER IN MONUMENT
BOX AT SW CORNER OF
SEC 12, T.2S., R.9E.
M. D. B. & M.

FD. PK NAIL
NEAR CENTERLINE
INTERSECTION OF
RIVER ROAD &
SUTLIFF AVENUE