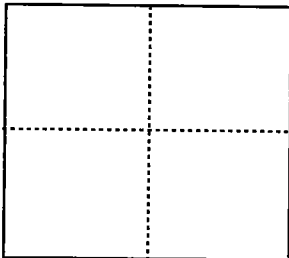


CORNER RECORD

City of _____ Document Number 04-11
County of San Joaquin, California

Brief Legal Description Southeast Corner, Parcel 2, per Record of Survey Book 21, Page 140, San Joaquin County Records.



CORNER TYPE

- Government Corner Control
- Meander Property
- Rancho Other

COORDINATES (Optional)

N. _____
 E. _____
 Zone _____ NAD27 NAD83
 NAD83 Epoch _____
 Elev. _____
 Vert. Datum: NGVD29 NAVD88
 Meas. Units: Metric Imperial

Date of Survey July 17, 2003

Corner - Left as found Found and tagged Established Reestablished Rebuilt

Identification and type of corner found: Evidence used to identify or procedure used to establish or reestablish the corner:
The survey monument destroyed at this location was re-established using the ties shown on CR-03-05, S.J.C.R.

A description of the physical condition of the monument as found and as set or reset: _____

- Indicates Found Monument as noted.
- Indicates set 3/4" x 30" Iron Pipe Tagged L.S. 4450

SURVEYOR'S STATEMENT

This Corner Record was prepared by me or under my direction in conformance with the Land Surveyor's Act on July 28, 2003.

Signed Michael L. Quarantoli L.S. Number 4450



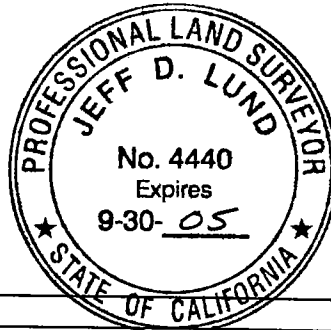
COUNTY SURVEYOR'S STATEMENT

This Corner Record was received AUGUST 6, 2003 and examined and filed JUNE 25, 2004.

Signed Jeff D. Lund L.S. Number 4440

Title Asst. County Surveyor

County Surveyor's Comment _____

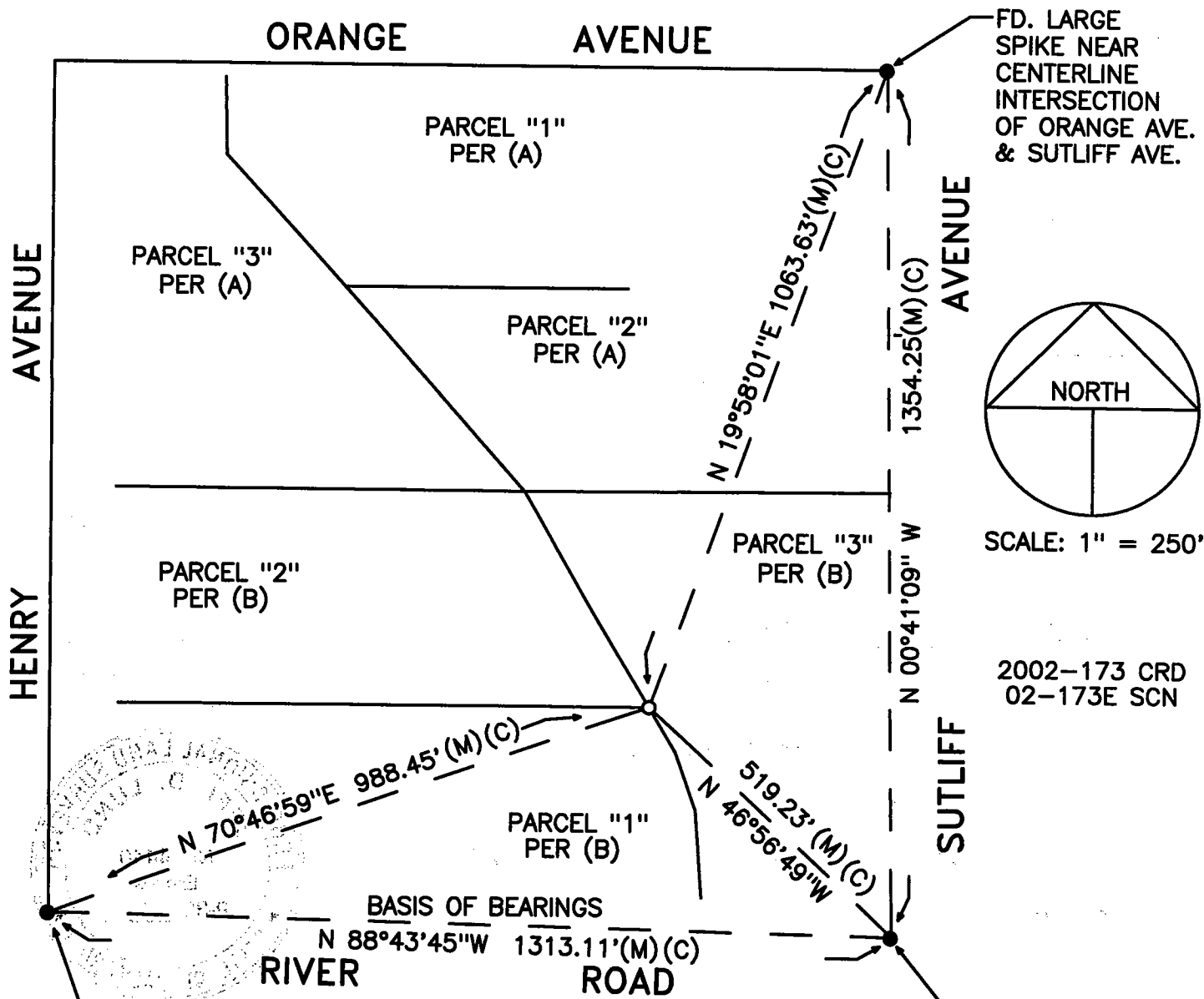


LEGEND

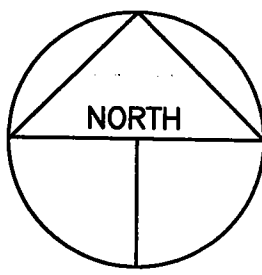
FD. INDICATES FOUND ON THIS SURVEY
 S.F.N. INDICATES SEARCHED, FOUND NOTHING
 R.S. INDICATES RECORD OF SURVEY, BOOK AND PAGE, S.J.C.R.
 S.J.C.R. INDICATES SAN JOAQUIN COUNTY RECORDS
 (M) INDICATES MEASURED

BASIS OF BEARINGS

THE BEARING BETWEEN THE SW CORNER OF SECTION 12, T.2S., R.9E., M.D.B. & M. AND THE FOUND PK NAIL NEAR THE CENTERLINE INTERSECTION OF RIVER ROAD AND SUTLIFF AVE. BEARS N 88° 43' 45" W PER CR-03-05, S.J.C.R.



FD. LARGE SPIKE NEAR CENTERLINE INTERSECTION OF ORANGE AVE. & SUTLIFF AVE.



SCALE: 1" = 250'

2002-173 CRD
 02-173E SCN

FD. SAN JOAQUIN COUNTY PIN & WASHER IN MONUMENT BOX AT SW CORNER OF SEC 12, T.2S., R.9E. M. D. B. & M.

REFERENCES

- (A) R.S. 21-75, S.J.C.R.
- (B) R.S. 21-140, S.J.C.R.
- (C) CR-03-05, S.J.C.R.