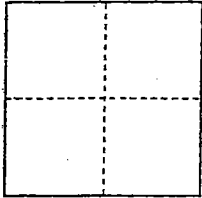


CORNER RECORD

City of Unincorporated Area

Document Number 04-07
County of San Joaquin, California

Brief Legal Description S.W. corner of Chestnut St. and Mokelumne St.,
N.E 1/4, Sec. 34, T. 4 N., R.6 E., M.D.M.



CORNER TYPE

- Government Corner Control
- Meander Property
- Rancho Other

Date of Survey 11/24/03

COORDINATES (Optional)

N. _____
 E. _____
 Zone _____ NAD27 NAD83
 NAD83 Epoch _____
 Elev. _____
 Vert. Datum: NGVD29 NAVD88
 Meas. Units: Metric Imperial

Corner - Left as found Found and tagged Established Reestablished Rebuilt

Identification and type of corner found: Evidence used to identify or procedure used to establish or reestablish the corner:

Utilized ties from corner record, date of survey 2/25/03. CR-03-47

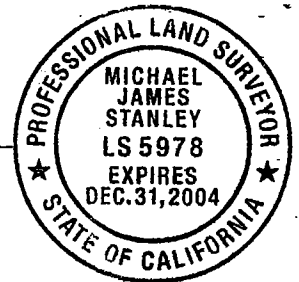
A description of the physical condition of the monument as found and as set or reset:

Set 5/8" rebar with plastic cap, stamped "MTCO LS 5978"
in monument well.

SURVEYOR'S STATEMENT

This Corner Record was prepared by me or under my direction in conformance with the Land Surveyors' Act on December 30, 2003.

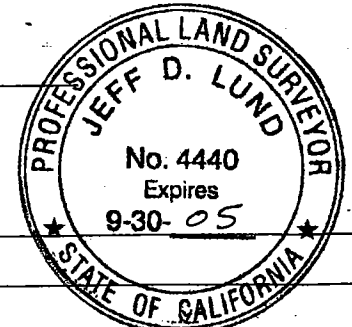
Signed Michael James Stanley L.S. ~~5978~~ Number LS 5978



COUNTY SURVEYOR'S STATEMENT

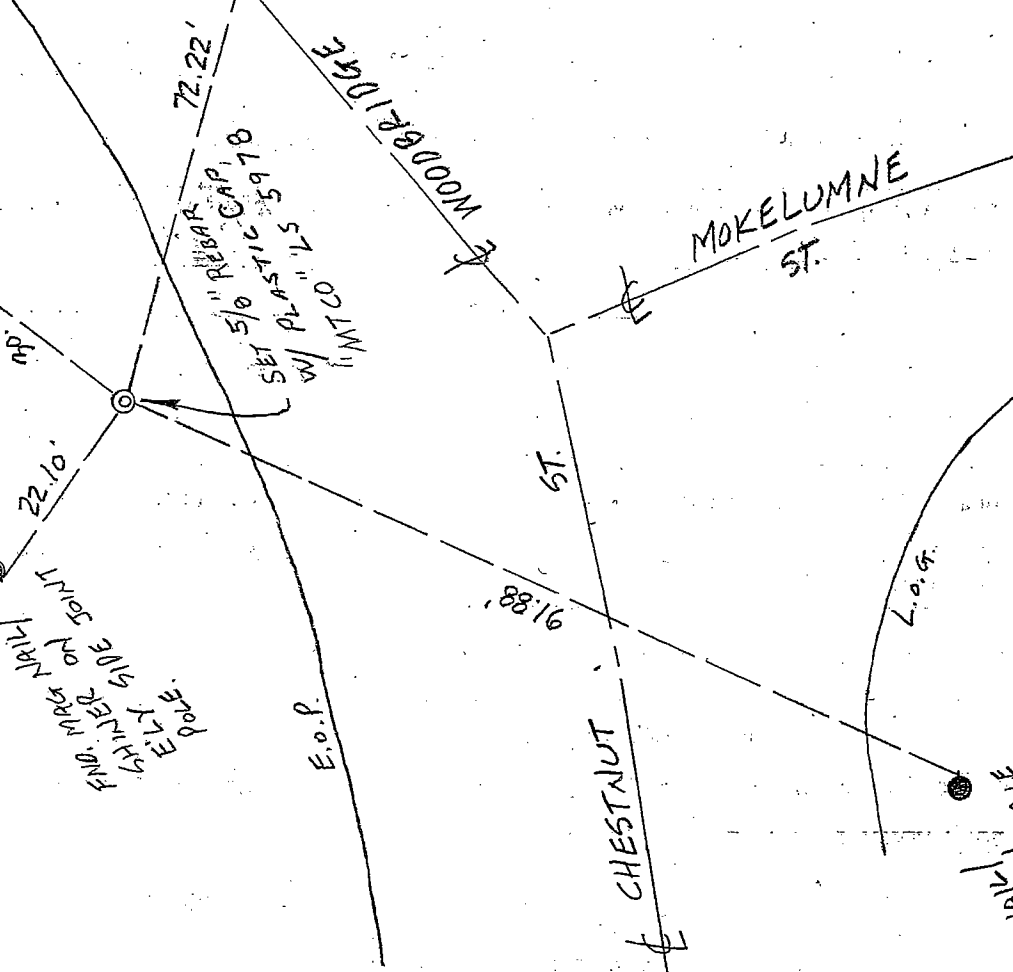
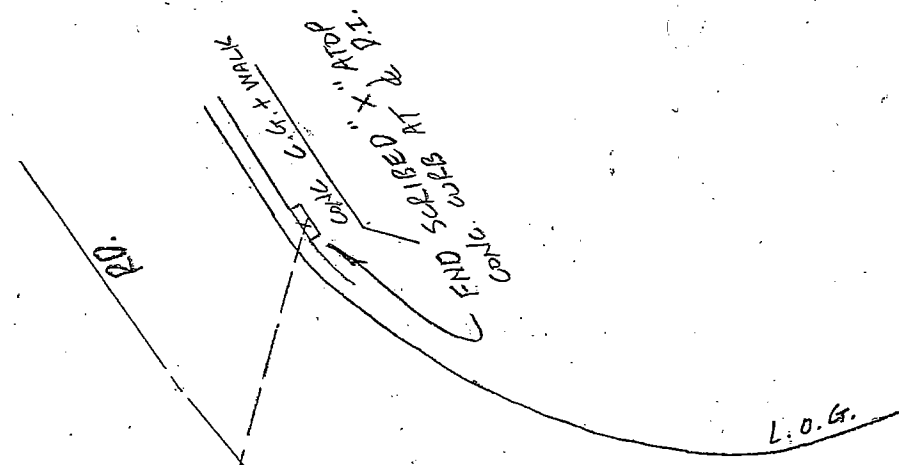
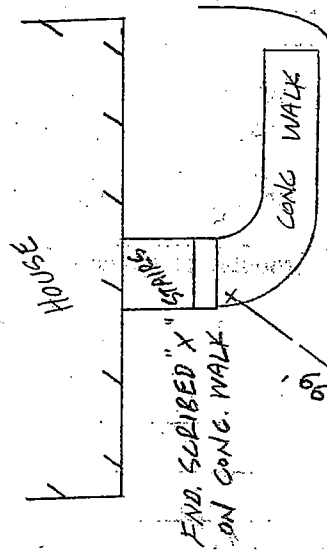
This Corner Record was received January 12, 2004 and examined and filed FEBRUARY 5, 2004.

Signed Jeff D. Lund L.S. ~~4440~~ No. 4440
Title ASSISTANT County Surveyor



County Surveyor's Comment _____

(D.D. Sheet No. 12A)



END PK. MARK
SHIMMER ON N
SIDE OF TOILET POLE

END PK. MARK
SHIMMER ON N
SIDE OF TOILET POLE

