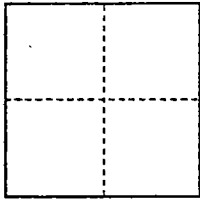


CORNER RECORD

Document Number 04-06  
City of Unincorporated Area County of San Joaquin, California

Brief Legal Description Intersection of Chestnut Street and Augusta St., NE  
1/4, Sec. 34, T.4N, R.6E., M.D.M.



CORNER TYPE

Government Corner  Control   
Meander  Property   
Rancho  Other

Date of Survey 11/24/03

COORDINATES (Optional)

N. \_\_\_\_\_  
E. \_\_\_\_\_  
Zone \_\_\_\_\_ NAD27  NAD83   
NAD83 Epoch \_\_\_\_\_  
Elev. \_\_\_\_\_  
Vert. Datum: NGVD29  NAVD88   
Meas. Units: Metric  Imperial

Corner - Left as found  Found and tagged  Established  Reestablished  Rebuilt

Identification and type of corner found: Evidence used to identify or procedure used to establish or reestablish the corner:  
Utilized ties from corner record, date of survey 2/25/03. CR-03-45

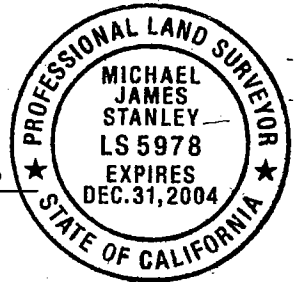
A description of the physical condition of the monument as found and as set or reset:

Set 5/8" rebar with plastic lap, stamped "MTCO LS 5978"  
in monument well.

SURVEYOR'S STATEMENT

This Corner Record was prepared by me or under my direction in conformance with the Land Surveyors' Act on December 30, 2003.

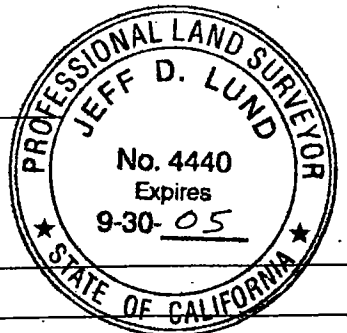
Signed MJ Stanley L.S. ~~5978~~ Number L55978



COUNTY SURVEYOR'S STATEMENT

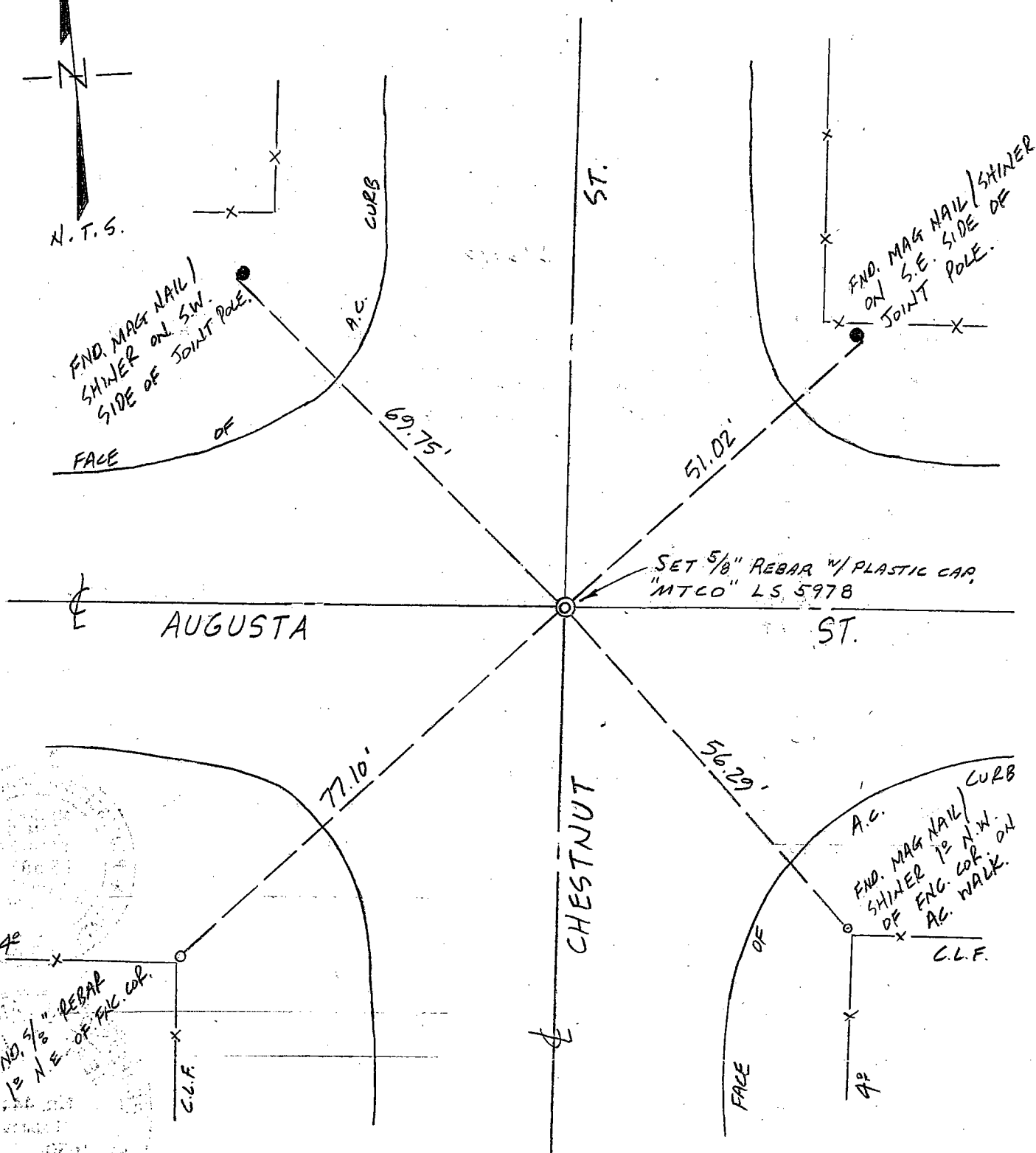
This Corner Record was received January 12, 2004 and examined and filed FEBRUARY 5, 2004.

Signed Jeff Lund L.S. ~~4440~~ No. 4440  
Title ASSISTANT County Surveyor



County Surveyor's Comment \_\_\_\_\_

(D.D. Sheet No. 12A )



FND. MAG NAIL / SHINER ON SW. SIDE OF JOINT POLE.

FND. MAG NAIL / SHINER ON S.E. SIDE OF JOINT POLE.

SET 5/8" REBAR w/ PLASTIC CAP, "MTCO" LS 5978

FND. MAG NAIL / SHINER TO N.W. OF ENG. COR. ON A.C. WALK.

FND. 5/8" REBAR TO N.E. OF FAC. COR.

