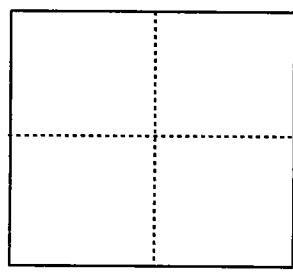


CORNER RECORD

City of _____ Document Number 04-01
County of San Joaquin, California

Brief Legal Description Parcel "B" per P.M. 9-6, S.J.C.R. Except therefrom Parcel "A" per P.M. 9-109, S.J.C.R. and Parcel "1" per P.M. 21-33, S.J.C.R.



CORNER TYPE

- Government Corner Control
Meander Property
Rancho Other

Date of Survey Feb. 21, 2003

COORDINATES (Optional)

- N. _____
E. _____
Zone _____ NAD27 NAD83
NAD83 Epoch _____
Elev. _____
Vert. Datum: NGVD29 NAVD88
Meas. Units: Metric Imperial

Corner - Left as found Found and tagged Established Reestablished Rebuilt

Identification and type of corner found: Evidence used to identify or procedure used to establish or reestablish the corner:
The destroyed survey monuments were reset by using found survey monuments as noted and filed parcel maps as noted.

A description of the physical condition of the monument as found and as set or reset: _____
● Indicates found monument as noted.
○ Indicates set 3/4" x 30" Iron pipe tagged L.S. 4450.

SURVEYOR'S STATEMENT

This Corner Record was prepared by me or under my direction in conformance with the Land Surveyor's Act on January 13, 2004..

Signed Michael L. Quarantoli S. Number 4450



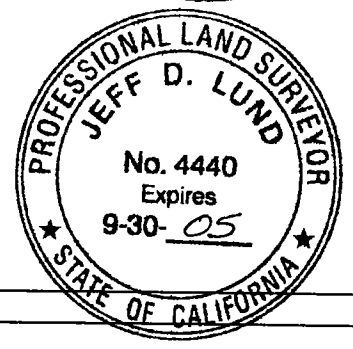
COUNTY SURVEYOR'S STATEMENT

This Corner Record was received January 22, 2004 and examined and filed JANUARY 26, 2004.

Signed Jeff D. Lund P.L.S. ~~4440~~ Number 4440

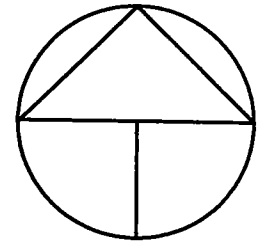
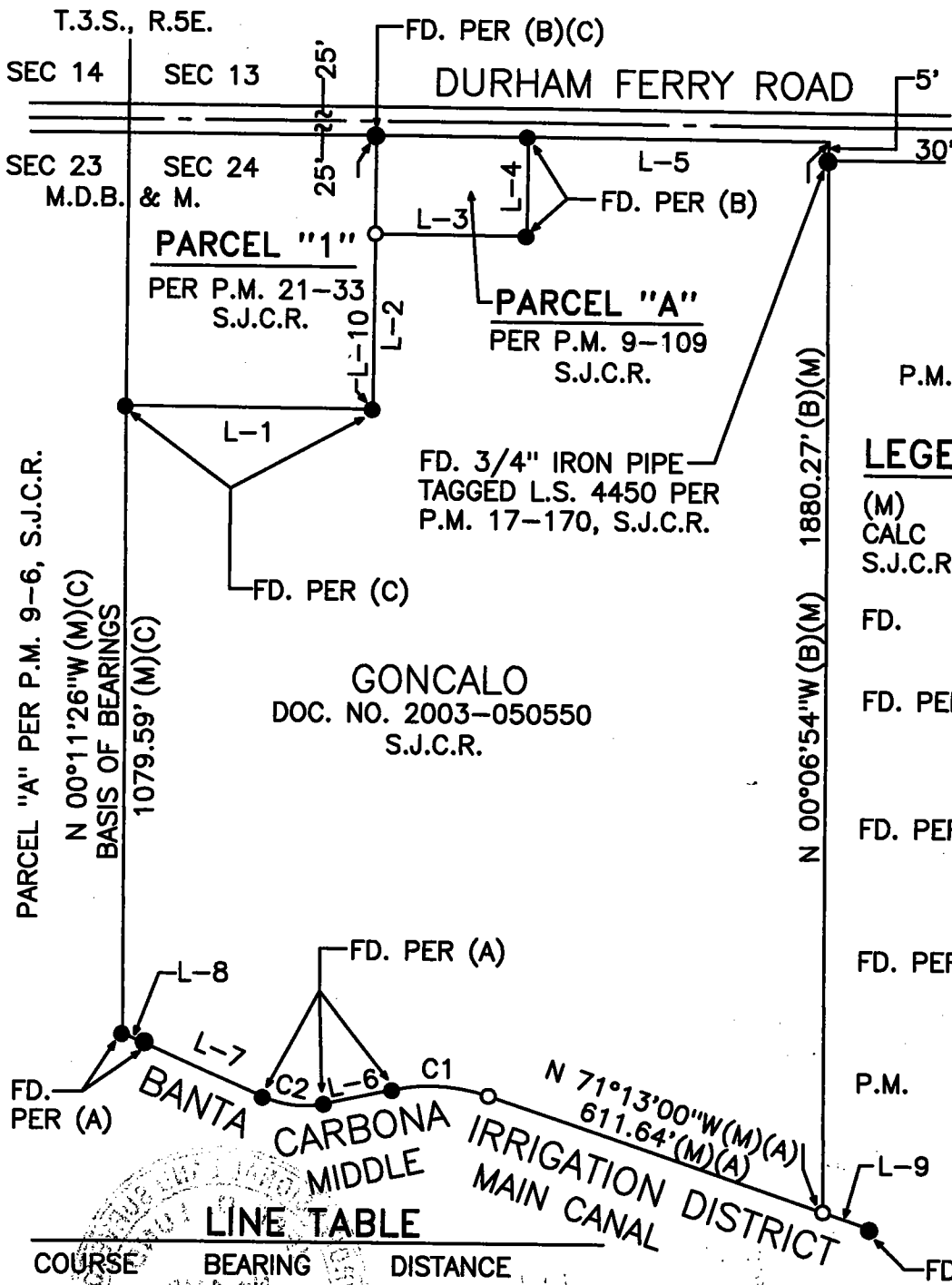
Title Assistant County Surveyor

County Surveyor's Comment _____



(D.D. Sheet No. 68)

Job No. 2003-24



SCALE: 1" = 300'
 2003-24 CRD
 03-24 SCR N

P.M. 17-170, S.J.C.R.

LEGEND

- (M) INDICATES MEASURED
- CALC INDICATES CALCULATED
- S.J.C.R. INDICATES SAN JOAQUIN COUNTY RECORDS
- FD. INDICATES FOUND AS NOTED
- FD. PER (A) INDICATES FOUND 3/4" IRON PIPE TAGGED R.C.E. 14901 PER (A)
- FD. PER (B) INDICATES FOUND 3/4" IRON PIPE TAGGED R.C.E. 14901 PER (B)
- FD. PER (C) INDICATES FOUND 3/4" IRON PIPE TAGGED R.C.E. 32158 PER (C)
- P.M. INDICATES PARCEL MAP

LINE TABLE

COURSE	BEARING	DISTANCE	
L-1	S 89°44'25"E	428.55'	(C)(M)
L-2	N 00°15'35"E	306.60'	(C)(M)
L-3	S 89°44'25"E	260.00'	(B)(M)
L-4	N 00°15'35"E	174.30'	(B)(M)
L-5	N 89°44'25"W	521.58'	(M)
L-6	N 77°56'30"E	120.54'	(A)
L-7	N 66°13'30"W	256.84'	(A)
L-8	N 66°16'08"W	11.10'	(A)
L-9	N 71°13'00"W	99.73'	(A)(M)
L-10	N 00°15'35"E	480.90'	(C)(M)

REFERENCES

- (A) PARCEL MAP 9-6, S.J.C.R.
- (B) PARCEL MAP 9-109, S.J.C.R.
- (C) PARCEL MAP 21-33, S.J.C.R.

BASIS OF BEARINGS

THE WEST LINE OF DOC. NO. 2003-050550, S.J.C.R. BEARS N 00° 11' 26" W PER (C).

CURVE TABLE

- C1 R=309.04' Δ = 35° 50' 30" L = 166.35' CH = N 86° 38' 15" W 164.35' (M)
- C2 R=172.82' Δ = 35° 50' L = 108.08' CH = N 84° 08' 30" W 106.33' (A)