

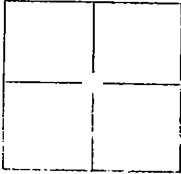
CORNER RECORD

City of RIPON

Document Number 03-49

County of SAW JOAQUIN, California

Brief Legal Description LOT 3, BLOCK 17, RIPONA, FILED MAY 6, 1913, VOL. 7, M.S.P., PG. 13, S.J.C.R.



CORNER TYPE

Government Corner Control
 Meander Property
 Rancho Other

Date of Survey JULY 24, 25, 2003

COORDINATES(Optional)

N. _____
 E. _____
 Zone _____ NAD27 NAD83
 NAD83 Epoch _____
 Elev. _____
 Vert. Datum: NGVD29 NADV88
 Meas. Units: Metric Imperial

Corner - Left as found Found and tagged Established Reestablished Rebuilt

Identification and type of corner found: Evidence used to identify or procedure used to establish or reestablish the corner:

SEE BACKSIDE OF SHEET

A description of the physical condition of the monument as found and as set or reset:

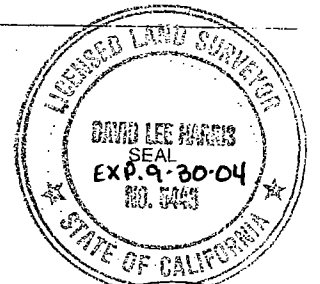
SET 3/4" IRON PIPES, TAGGED L.S. 5443

SURVEYOR'S STATEMENT

This Corner Record was prepared by me or under my direction in conformance with

the Land Surveyor's Act on SEPTEMBER 03, 2003.

Signed [Signature] P.L.S. ~~OFFICE~~ No.: L.S. 5443
 EXP. 9-30-04



COUNTY SURVEYOR'S STATEMENT

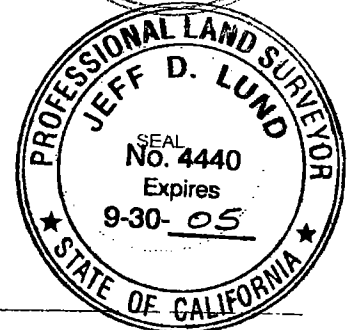
This Corner Record was received DECEMBER 2, 2003 and examined

and filed DECEMBER 5, 2003.

Signed [Signature] P.L.S. ~~OFFICE~~ No.: 4440

Title ASSISTANT COUNTY SURVEYOR

County Surveyor's Comment _____





ASPEN SURVEY

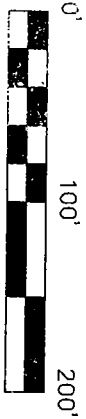
1121 OAKDALE RD., STE. 6
PH: (209) 526-9724
MODesto, CA 95335

PH: (800) 526-9724
FX: (209) 526-0472

CORNER RECORD PLAT

OF LOT 3, BLOCK 17, OF RIPONA, CITY OF RIPON,
SAN JOAQUIN COUNTY, CALIFORNIA
SEPTEMBER, 2003

JM C:\scadcas\WORK\03-73\DWG\0373PLA12.dwg



GRAPHIC SCALE

BASIS OF BEARINGS:
SOUTHERLY RIGHT-OF-WAY LINE OF
MILGEO AVENUE, AS SHOWN ON VOL. 7,
MAPS, PG. 13, S.J.C.R., TAKEN TO BE N.
88°40' E.

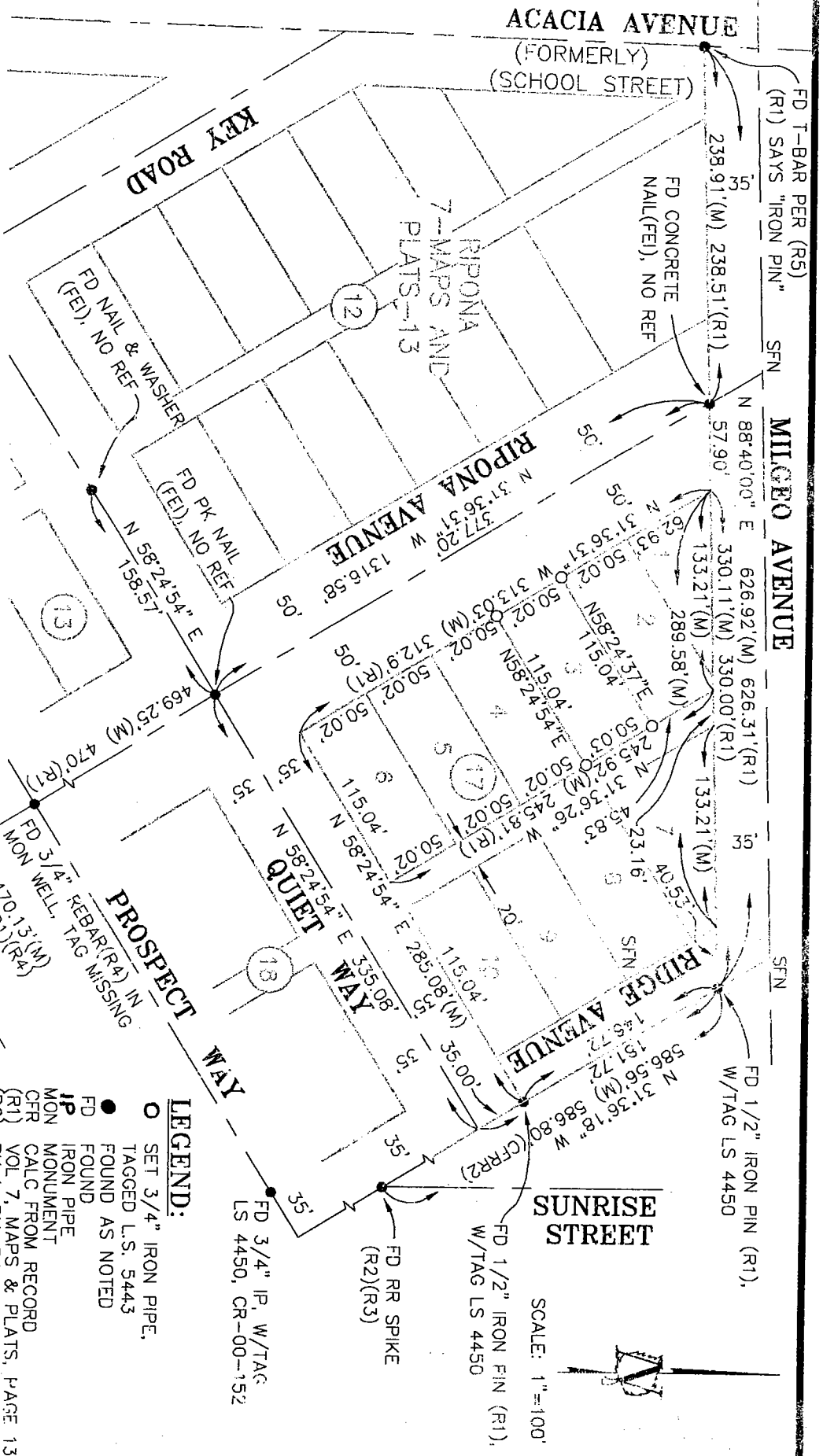
WASHINGTON STREET
(FORMERLY CURVE WAY)

PROSPECT WAY

QUIET WAY

LEGEND:

- SET 3/4" IRON PIPE, TAGGED L.S. 5443
- FOUND AS NOTED
- FOUND
- IP IRON PIPE
- MON MONUMENT
- CFR CALC FROM RECORD
- (R1) VOL. 7, MAPS & PLATS, PAGE 13
- (R2) BK 1, P.M., PAGE 70
- (R3) BK 30, SURVEYS, PAGE 188
- (R4) BK 5, P.M., PAGE 84
- (R5) BK 18, P.M., PAGE 152
- (FEI) FITTING EXISTING IMPROVEMENTS
- (M) MEASURED THIS SURVEY
- (NR) NO REFERENCE
- P.M. PARCEL MAP
- CR CORNER RECORD



SCALE: 1"=100'