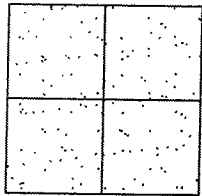


CORNER RECORD

City of _____

Document number 03-41
County of San Joaquin, California

Brief Legal Description MANTHEY ROAD 3014± N/O BOWMAN ROAD



CORNER TYPE

Government Corner Control
Meander Property
Rancho Other

Date of Survey January 2, 2002

COORDINATES (Optional)

N. _____
E. _____
Zone _____ NAD27 NAD83
NAD83 Epoch _____
Elev. _____
Vert. Datum: NGVD29 NAVD88
Meas. Units: Metric Imperial

Corner - Left as found Found and tagged Established Reestablished Rebuilt

Identification and type of corner found: Evidence used to identify or procedure used to establish or reestablish the corner:
SEE SKETCH ON BACKSIDE.

A description of the physical condition of the monument as found and as set or reset:
FOUND MONUMENT IN GOOD CONDITION. SEE SKETCH ON BACKSIDE.

SURVEYOR'S STATEMENT

This Corner Record was prepared by me or under my direction in conformance with the Land Surveyors' Act on May 2, 2003.

Signed Manuel Solorio R.C.E. Number C30890

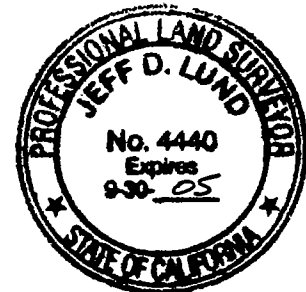


COUNTY SURVEYOR'S STATEMENT

This Corner Record was received MAY 5, 2003 and examined and filed MAY 6, 2003.

Signed Jeff Lund P.L.S. No. 4440

Title Assistant County Surveyor



County Surveyor's Comment _____
THIS CORNER RECORD IS NOT IN COMPLIANCE WITH BOARD RULE 464(c)
REGARDING SUBMITTAL WITHIN 90 DAYS FROM THE DATE OF SURVEY.



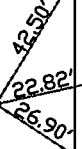
Set JP



170.00'

ROAD

MANTHEY



Chiseled "+"
on TOC

Fd. Bolt and Washer Per
Monumentation Map No. 111, Sheets 1-9,
on File at the Dept. of Transportation
(Survey Dept.) in Stockton, California
(No tag)

"No Attempt Was Made to Verify the Monument(s)"

- FP=Fence Post
- GP=Guy Post
- JP=Joint Pole
- PP=Power Pole
- SP=Service Pole
- TOC=Top of Curb
- TP=Telephone Pole
- N.T.S.=Not To Scale
- Set=Conc. Nails with Brass Washers Stamped
"S.J. Co.", unless otherwise noted