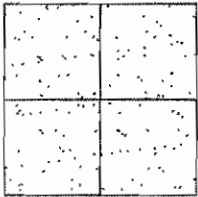


CORNER RECORD

Docume number 03-25
County of San Joaquin, California

City of _____

Brief Legal Description MANTHEY ROAD 2141± S/O MATHEWS ROAD



CORNER TYPE

- Government Corner Control
- Meander Property
- Rancho Other

Date of Survey January 2, 2002

COORDINATES (Optional)

N. _____
 E. _____
 Zone _____ NAD27 NAD83
 NAD83 Epoch _____
 Elev. _____
 Vert. Datum: NGVD29 NAVD88
 Meas. Units: Metric Imperial

Corner - Left as found Found and tagged Established Reestablished Rebuilt

Identification and type of corner found: Evidence used to identify or procedure used to establish or reestablish the corner:
SEE SKETCH ON BACKSIDE.

A description of the physical condition of the monument as found and as set or reset:
FOUND MONUMENT IN GOOD CONDITION. SEE SKETCH ON BACKSIDE.

SURVEYOR'S STATEMENT

This Corner Record was prepared by me or under my direction in conformance with the Land Surveyors' Act on May 2, 2003.

Signed Manuel Solorio R.C.E. Number C30890



COUNTY SURVEYOR'S STATEMENT

This Corner Record was received MAY 5, 2003 and examined and filed MAY 6, 2003.

Signed Jeff Lund P.L.S. No. 4440

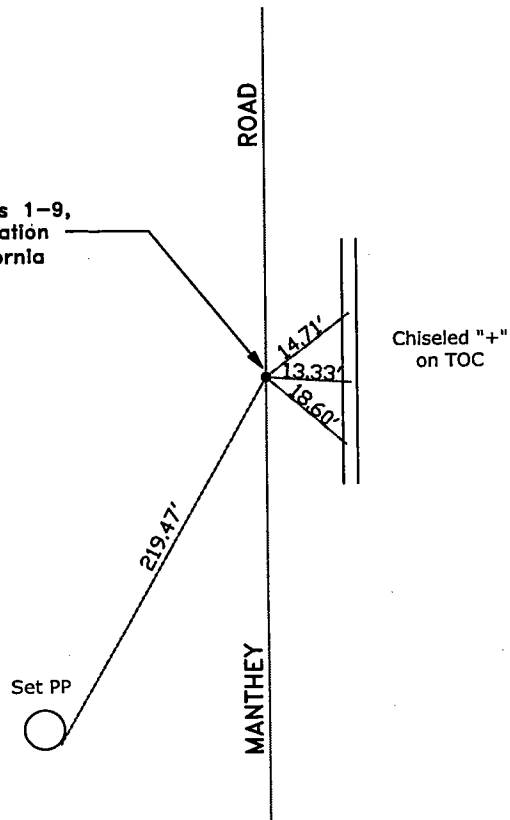
Title Assistant County Surveyor



County Surveyor's Comment
THIS CORNER RECORD IS NOT IN COMPLIANCE WITH BOARD RULE 464(c) REGARDING SUBMITTAL WITHIN 90 DAYS FROM THE DATE OF SURVEY.



Fd. Bolt and Washer Per
Monumentation Map No. 111, Sheets 1-9,
on File at the Dept. of Transportation
(Survey Dept.) in Stockton, California
(No tag)



"No Attempt Was Made to Verify the Monument(s)"

- FP=Fence Post
- GP=Guy Post
- JP=Joint Pole
- PP=Power Pole
- SP=Service Pole
- TOC=Top of Curb
- TP=Telephone Pole
- N.T.S.=Not To Scale
- Set=Conc. Nails with Brass Washers Stamped
"S.J. Co.", unless otherwise noted