

# CORNER RECORD

Document Number 03-09City of RIPON County of SAN JOAQUIN, CaliforniaBrief Legal Description SOUTHEAST CORNER OF SECTION 18, T. 2 S., R. 8 E., M.B.D. & M.,  
PER MAPS AND PLATS, BOOK 36, PAGE 99, SAN JOAQUIN COUNTY RECORDS

18	17
19	20

**CORNER TYPE**

Government Corner  Control   
 Meander  Property   
 Rancho  Other   
 Date of Survey 9-23-02

**COORDINATES (Optional)**

N. \_\_\_\_\_  
 E. \_\_\_\_\_  
 Zone \_\_\_\_\_ NAD27  NAD83   
 NAD83 Epoch \_\_\_\_\_  
 Elev. \_\_\_\_\_  
 Vert. Datum: NGVD29  NAVD88   
 Meas. Units: Metric  Imperial

Corner - Left as found  Found and tagged  Established  Reestablished  Rebuilt

Identification and type of corner found: Evidence used to identify or procedure used to establish or reestablished the corner:  
FOUND 3" SAN JOAQUIN COUNTY BRASS CAP, NOT STAMPED, IN MONUMENT BOX .

A description of the physical condition of the monument as found and as set or reset: \_\_\_\_\_  
FOUND MONUMENT IN GOOD CONDITION, SEE SKETCH ON BACK.

THE MONUMENT WILL BE DESTROYED DUE TO STREET IMPROVEMENTS FOR THE CHESAPEAKE PROJECT.

**SURVEYOR'S STATEMENT**

This Corner Record was prepared by me or under my direction in conformance with the Land Surveyors' Act on NOVEMBER 25, 2002.

Signed [Signature] L.S. Number 6953

**COUNTY SURVEYOR'S STATEMENT**

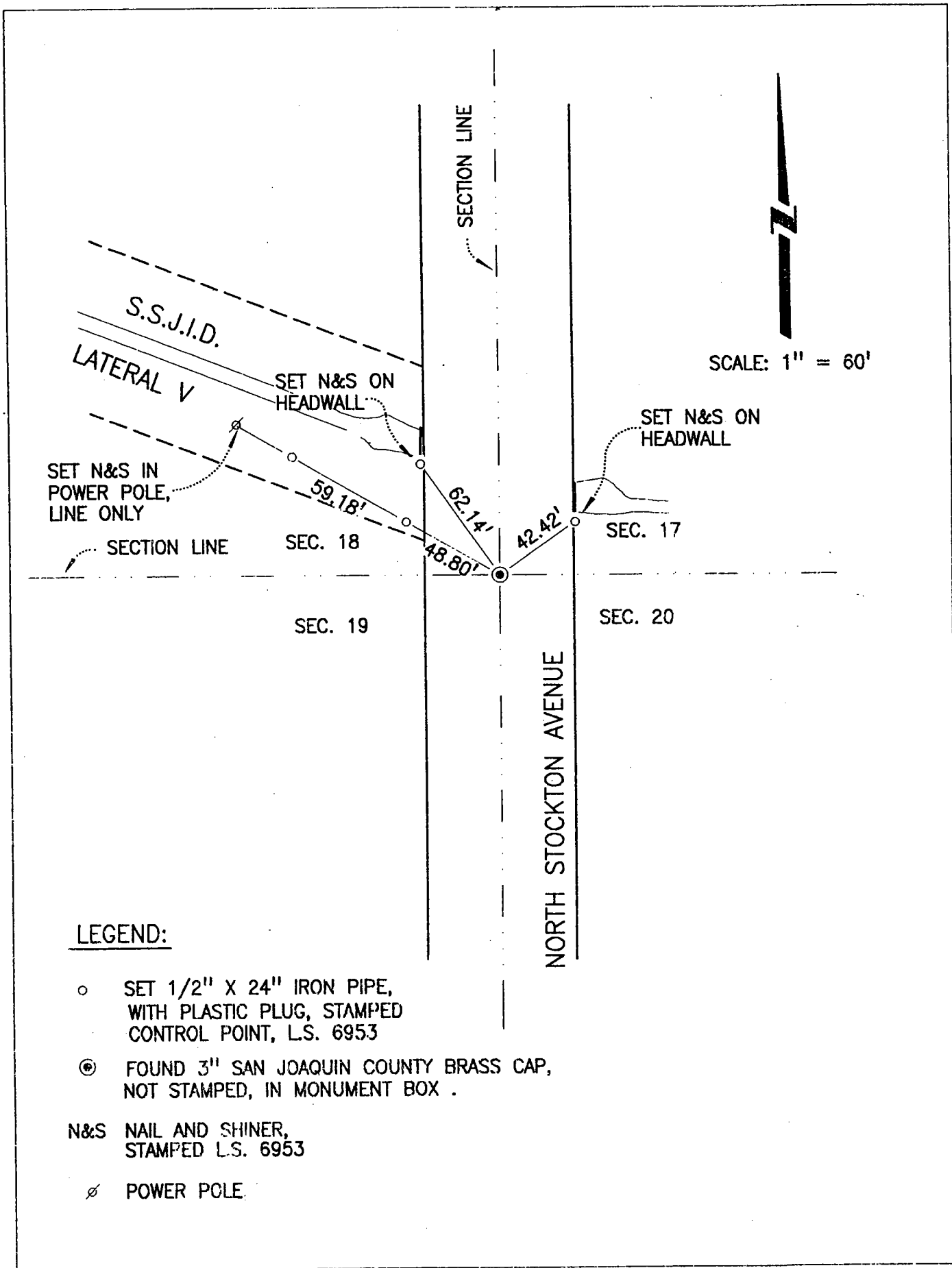
This Corner Record was received February 12, 200~~2~~<sup>3</sup> and examined and filed February 14, 2003.

Signed [Signature] P.L.S. No. 4440

Title Assistant County Surveyor



County Surveyors' Comment \_\_\_\_\_



LEGEND:

- SET 1/2" X 24" IRON PIPE, WITH PLASTIC PLUG, STAMPED CONTROL POINT, L.S. 6953
- ⊙ FOUND 3" SAN JOAQUIN COUNTY BRASS CAP, NOT STAMPED, IN MONUMENT BOX .
- N&S NAIL AND SHINER, STAMPED L.S. 6953
- ⊘ POWER POLE.