

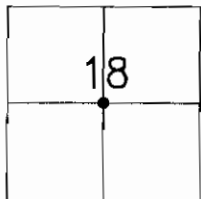
# CORNER RECORD

Document Number 03-08

City of RIPON

County of SAN JOAQUIN, California

Brief Legal Description CENTER OF SECTION 18, T. 2 S., R. 8 E. M.B.D. & M.,  
PER P.M. 9-56



### CORNER TYPE

Government Corner  Control   
 Meander  Property   
 Rancho  Other   
 Date of Survey 9-23-02

### COORDINATES (Optional)

N. \_\_\_\_\_  
 E. \_\_\_\_\_  
 Zone \_\_\_\_\_ NAD27  NAD83   
 NAD83 Epoch \_\_\_\_\_  
 Elev. \_\_\_\_\_  
 Vert. Datum: NGVD29  NAVD88   
 Meas. Units: Metric  Imperial

Corner - Left as found  Found and tagged  Established  Reestablished  Rebuilt

Identification and type of corner found: Evidence used to identify or procedure used to establish or reestablished the corner:  
FOUND 3/4" IRON PIPE, NOT TAGGED. PIPE IS IDENTIFIED AS CENTER OF SECTION 18.

THE PIPE WAS SET ON P.M. 9-56, AND ACCEPTED ON P.M. 17-38, P.M. 17-119, R.S. 29-89,  
R.S. 29-139, R.S. 32-163 AND M. & P. 37-45.

A description of the physical condition of the monument as found and as set or reset: \_\_\_\_\_

FOUND MONUMENT IN GOOD CONDITION, SEE SKETCH ON BACK.

THE MONUMENT WILL BE DESTROYED DUE TO STREET IMPROVEMENTS FOR THE CHESAPEAKE PROJECT.

### SURVEYOR'S STATEMENT

This Corner Record was prepared by me or under my direction in conformance with the Land Surveyors' Act on NOVEMBER 25, 2002.

Signed [Signature] L.S. Number 6953



### COUNTY SURVEYOR'S STATEMENT

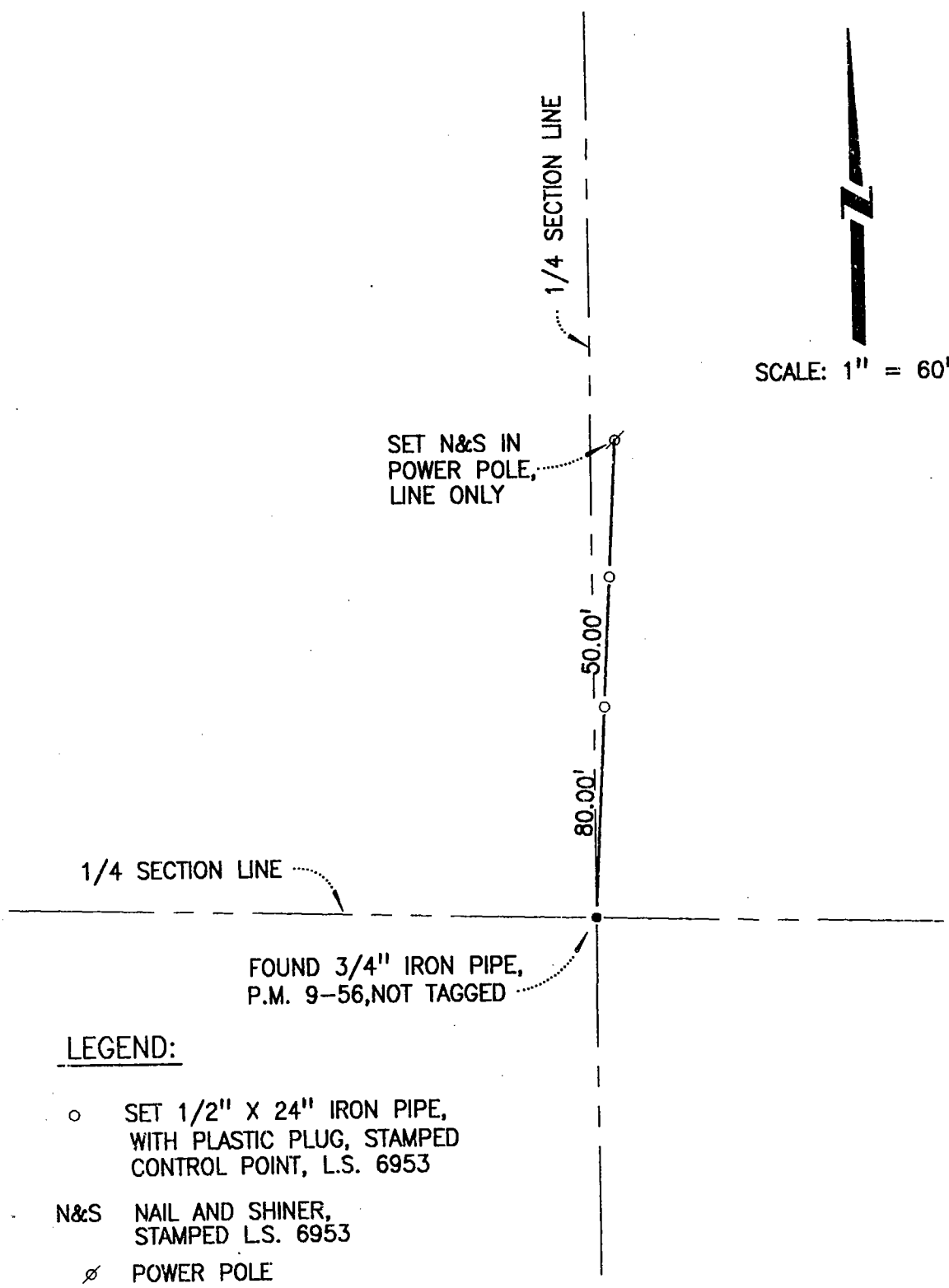
This Corner Record was received February 12, 200~~2~~<sup>3</sup> and examined and filed February 14, 2003.

Signed [Signature] P.L.S. No. 4440

Title Assistant County Surveyor



County Surveyors Comment \_\_\_\_\_



SCALE: 1" = 60'

SET N&S IN  
POWER POLE,  
LINE ONLY

1/4 SECTION LINE

FOUND 3/4" IRON PIPE,  
P.M. 9-56, NOT TAGGED

LEGEND:

- SET 1/2" X 24" IRON PIPE,  
WITH PLASTIC PLUG, STAMPED  
CONTROL POINT, L.S. 6953
- N&S NAIL AND SHINER,  
STAMPED L.S. 6953
- ⊘ POWER POLE