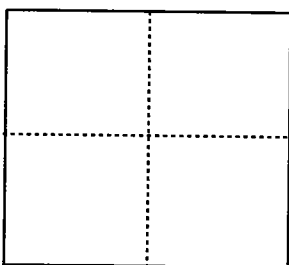


CORNER RECORD

City of _____ Document Number 03-06
County of San Joaquin, California

Brief Legal Description Northerly Angle point in Easterly line, Parcel 1, per Record of Survey Book 21, Page 140, San Joaquin County Records.



CORNER TYPE

- Government Corner Control
- Meander Property
- Rancho Other

Date of Survey December 11, 2002

COORDINATES (Optional)

N. _____
 E. _____
 Zone _____ NAD27 NAD83
 NAD83 Epoch _____
 Elev. _____
 Vert. Datum: NGVD29 NAVD88
 Meas. Units: Metric Imperial

Corner - Left as found Found and tagged Established Reestablished Rebuilt

Identification and type of corner found: Evidence used to identify or procedure used to establish or reestablish the corner:
Found Valve Stem of irrigation valve per Record of Survey Book 21, Page 140, San Joaquin County Records.

A description of the physical condition of the monument as found and as set or reset: _____
● Indicates Found Monument as noted.

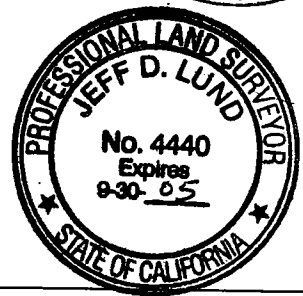
SURVEYOR'S STATEMENT

This Corner Record was prepared by me or under my direction in conformance with
 the Land Surveyor's Act on December 26, 2002.
 Signed Michael L. Quartaroli L.S. Number 4450



COUNTY SURVEYOR'S STATEMENT

This Corner Record was received JANUARY 16, 2003 and examined
 and filed JANUARY 22, 2003.
 Signed Jeff Lund L.S. Number 4440
 Title Asst. County Surveyor



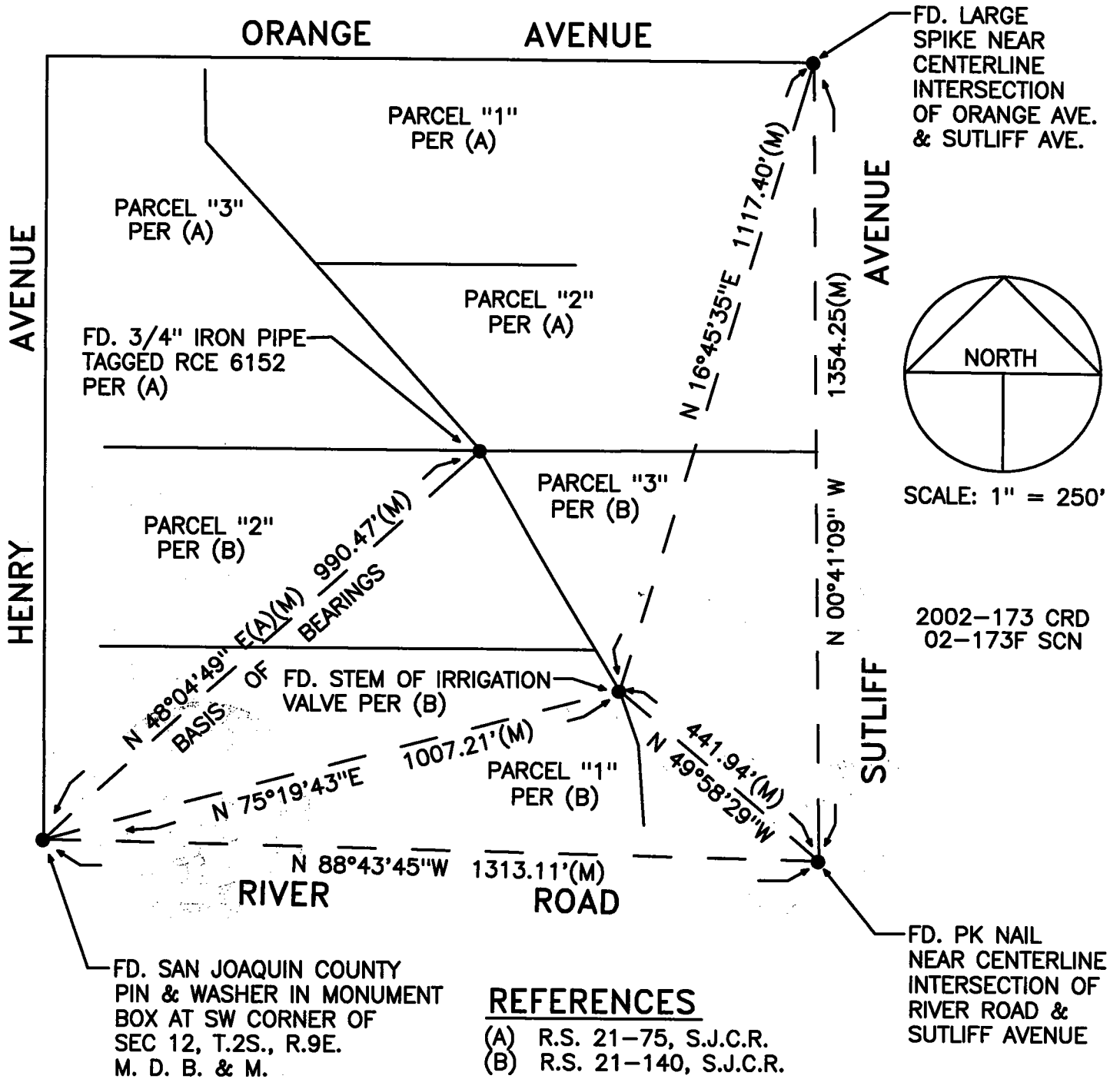
County Surveyor's Comment _____

LEGEND

FD. INDICATES FOUND ON THIS SURVEY
 S.F.N. INDICATES SEARCHED, FOUND NOTHING
 R.S. INDICATES RECORD OF SURVEY, BOOK AND PAGE, S.J.C.R.
 S.J.C.R. INDICATES SAN JOAQUIN COUNTY RECORDS
 (M) INDICATES MEASURED

BASIS OF BEARINGS

THE BEARING BETWEEN THE SW CORNER OF SECTION 12, T.2S., R.9E., M.D.B. & M. AND THE SE CORNER OF PARCEL 3 OF R.S. 21-75, S.J.C.R., BEARS N 48°04'49" E CALCULATED FROM R.S. 21-75, S.J.C.R.



REFERENCES

- (A) R.S. 21-75, S.J.C.R.
- (B) R.S. 21-140, S.J.C.R.