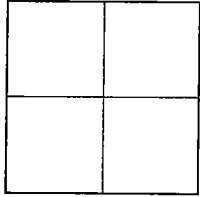


CORNER RECORD

City of Lodi

Document Number 02-61
County of San Joaquin, California

Brief Legal Description Lower Sacramento Road at Taylor Road



CORNER TYPE

Government Corner Control
Meander Property
Rancho Other

Date of Survey 8/8/99

COORDINATES (Optional)

N. _____
E. _____
Zone _____ NAD27 NAD83
NAD83 Epoch _____
Elev. _____
Vert. Datum: NGVD29 NAVD88
Meas. Units: Metric Imperial

Corner - Left as found Found and tagged Established Reestablished Rebuilt

Identification and type of corner found: Evidence used to identify or procedure used to establish or reestablish the corner:
Found railroad spike at the Northeast corner of the South half of the Southwest quarter of Section 10, Township 3 North, Range 6 east, Mount Diablo Base and Meridian. (P.M. 3-173)

A description of the physical condition of the monument as found and as set or reset: The monument is in good condition.

SURVEYOR'S STATEMENT

This Corner Record was prepared by me or under my direction in conformance with the Land Surveyors' Act on November 15, 2002.

Signed Terry Piazza L.S. or R.C.E. Number 19638



COUNTY SURVEYOR'S STATEMENT

This Corner Record was received DECEMBER 27, 2002 and examined and filed JANUARY 3, 2003.

Signed Jeff D. Lund P.L.S. No. 4440

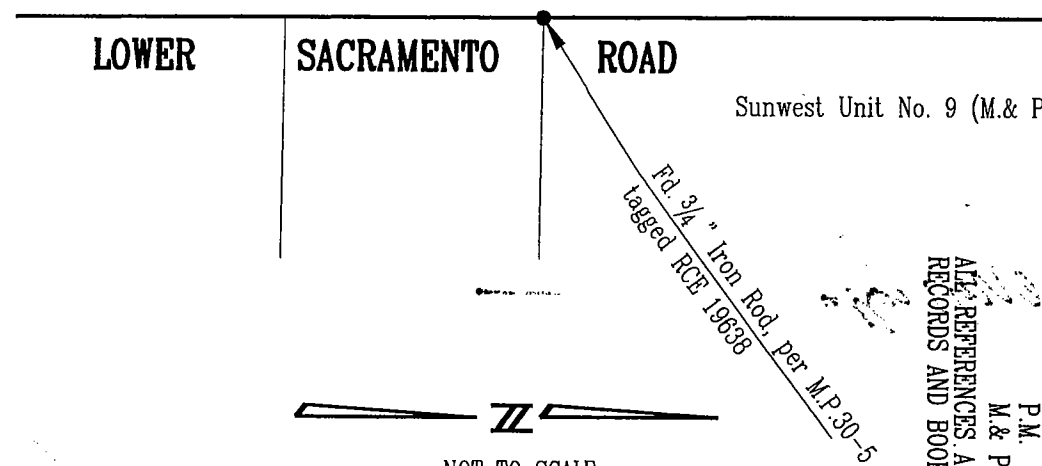
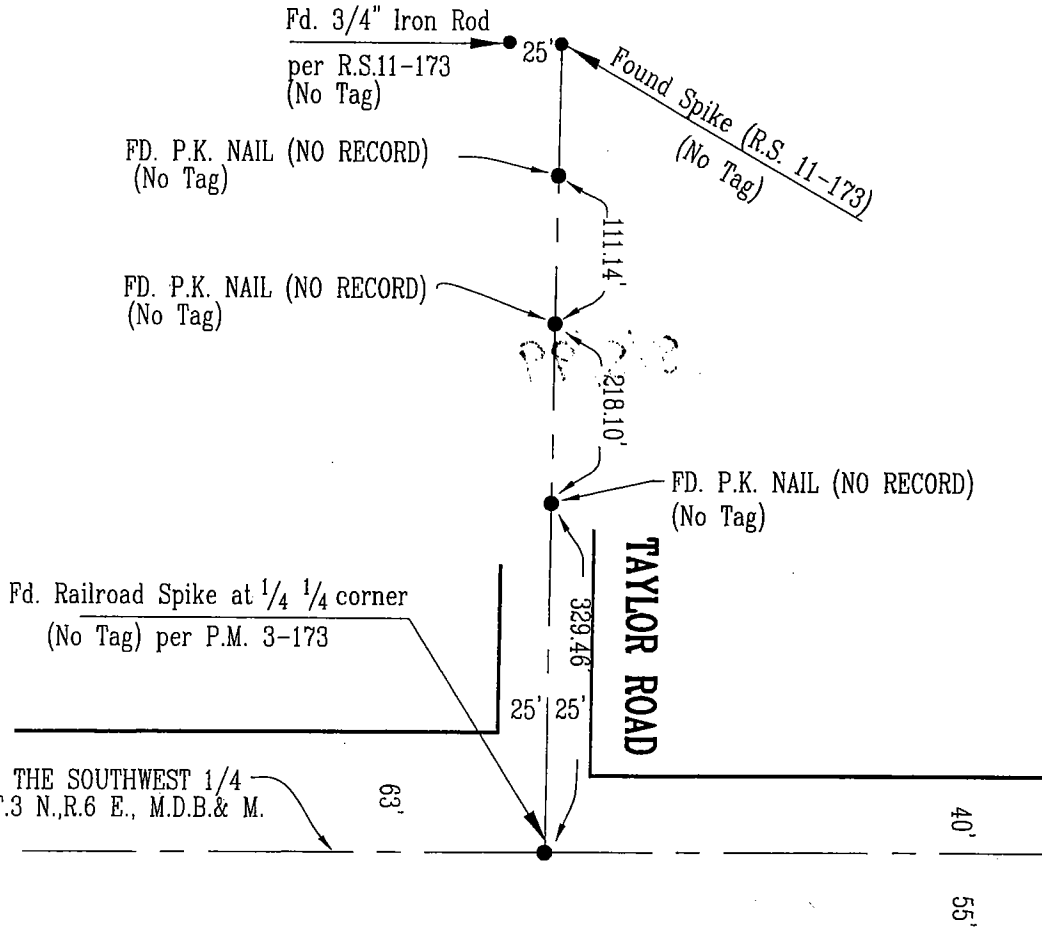
Title Assistant County Surveyor



County Surveyor's Comment This corner record is not in compliance with Board Rule 464(c) regarding submittal within 90 days from the date of survey.

(D.D. Sheet No. 15-A)

NOTE:
 THE TIES SHOWN HEREON ARE FOR THE PURPOSE OF PERPETUATING THE MONUMENTATION CURRENTLY EXISTING. NO ATTEMPT WAS MADE TO DETERMINE THE VALIDITY OF THE MONUMENTS OR THEIR PROPER LOCATION IN RELATION TO LEGAL BOUNDARY LINES IN THE AREA.



ALL REFERENCES ARE TO SAN JOAQUIN COUNTY RECORDS AND BOOK OR VOLUME PRECEDES PAGE.

LEGEND

SEC.	SECTION
FD.	FOUND
R.S.	RECORD OF SURVEY
P.M.	PARCEL MAP
M. & P.	BOOK OF MAPS AND PLATS