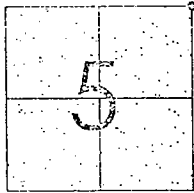


CORNER RECORD

Document Number 02-51  
County of San Joaquin, California

City of \_\_\_\_\_

Brief Legal Description DAVIS ROAD AT THE INTERSECTION OF TURNER ROAD  
NE CORNER OF NE 1/4 OF SECTION 5, T.4N., R.6E.



CORNER TYPE  
Government Corner  Control   
Meander  Property   
Rancho  Other   
Date of Survey October 23, 2001

COORDINATES (Optional)  
N. \_\_\_\_\_  
E. \_\_\_\_\_  
Zone \_\_\_\_\_ NAD27  NAD83   
NAD83 Epoch \_\_\_\_\_  
Elev. \_\_\_\_\_  
Vert. Datum: NGVD29  NAVD83   
Meas. Units: Metric  Imperial

Corner: Left as found  Found and tagged  Established  Reestablished  Rebuilt

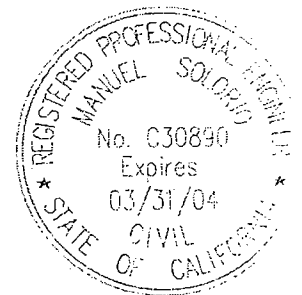
Identification and type of corner found: Evidence used to identify or procedure used to establish or reestablish the corner:  
SEE SKETCH ON BACKSIDE.

A description of the physical condition of the monument as found and as set or reset:  
FOUND MONUMENT IN GOOD CONDITION. SEE SKETCH ON BACKSIDE.

SURVEYOR'S STATEMENT

This Corner Record was prepared by me or under my direction in conformance with the Land Surveyors' Act on Dec 13, 2002.

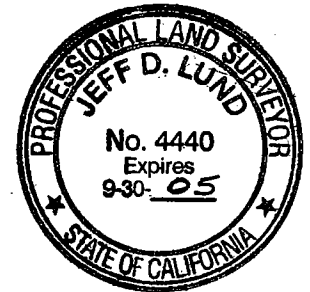
Signed Manuel Delouis R.C.E. Number C30890



COUNTY SURVEYOR'S STATEMENT

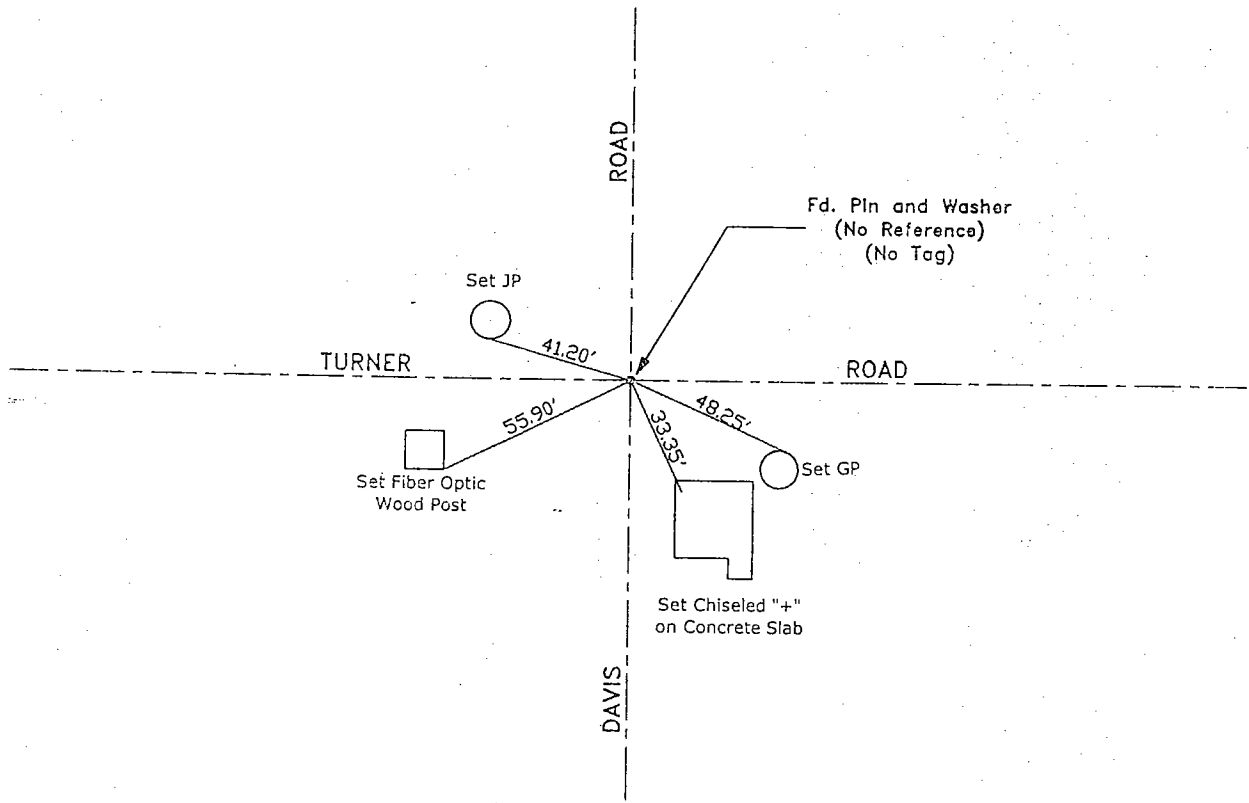
This Corner Record was received DEC. 16, 2002 and examined and filed DECEMBER 17, 2002.

Signed J.D. Lund P.L.S. No. 4440  
Title Assistant County Surveyor



County Surveyor's Comment \_\_\_\_\_  
THIS CORNER RECORD IS NOT IN COMPLIANCE WITH BOARD RULE 464(c)  
REGARDING SUBMITTAL WITHIN 90 DAYS FROM THE DATE OF SURVEY.

N.T.S.



"No Attempt Was Made to Verify the Monument(s)"

- FP=Fence Post
- GP=Guy Post
- JP=Joint Pole
- PP=Power Pole
- SP=Service Pole
- TP=Telephone Pole
- N.T.S.=Not To Scale
- Set=Conc. Nails with Brass Washers Stamped "S.J. Co.", unless otherwise noted