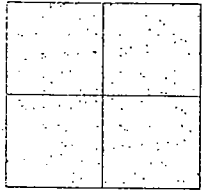


CORNER RECORD

Document Number 02-50
County of San Joaquin, California

City of _____

Brief Legal Description DAVIS ROAD AT THE INTERSECTION OF LARSON ROAD



CORNER TYPE

- Government Corner Control
- Meander Property
- Rancho Other

Date of Survey October 23, 2001

COORDINATES (Optional)

N. _____
 E. _____
 Zone _____ NAD27 NAD83
 NAD83 Epoch _____
 Elev. _____
 Vert. Datum: NGVD29 NAVD83
 Meas. Units: Metric Imperial

Corner - Left as found Found and tagged Established Reestablished Rebuilt

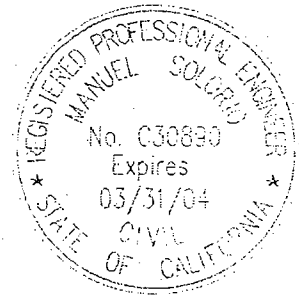
Identification and type of corner found: Evidence used to identify or procedure used to establish or reestablish the corner:
SEE SKETCH ON BACKSIDE.

A description of the physical condition of the monument as found and as set or reset:
FOUND MONUMENT IN GOOD CONDITION. SEE SKETCH ON BACKSIDE.

SURVEYOR'S STATEMENT

This Corner Record was prepared by me or under my direction in conformance with the Land Surveyors' Act on Dec. 13, 2002.

Signed Manuel Solario R.C.E. Number C30890



COUNTY SURVEYOR'S STATEMENT

This Corner Record was received DEC. 16, 2002 and examined and filed DECEMBER 17, 2002.

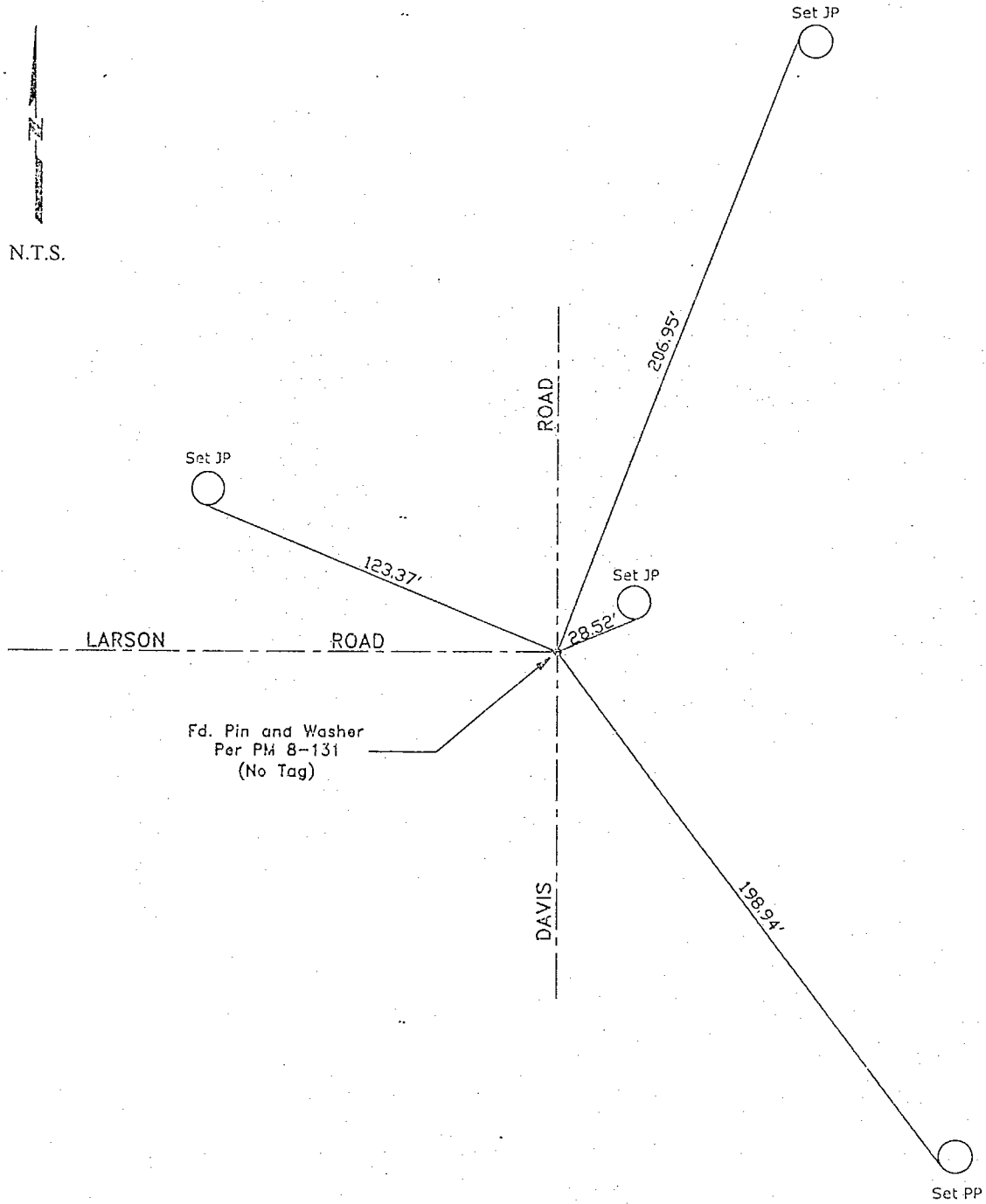
Signed [Signature] P.L.S. No. 4440

Title Assistant County Surveyor



County Surveyor's Comment
THIS CORNER RECORD IS NOT IN COMPLIANCE WITH BOARD RULE 464(c) REGARDING SUBMITTAL WITHIN 90 DAYS FROM THE DATE OF SURVEY.

N.T.S.



"No Attempt Was Made to Verify the Monument(s)"

FP=Fence Post
GP=Guy Post
JP=Joint Pole
PP=Power Pole
SP=Service Pole
TP=Telephone Pole
N.T.S.=Not To Scale
Set=Conc. Nails with Brass Washers Stamped
"S.J. Co.", unless otherwise noted