

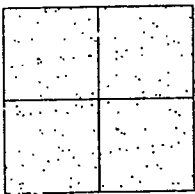
CORNER RECORD

Document Number CR-02-48
County of San Joaquin, California

City of _____

Brief Legal Description UNION ROAD AT THE INTERSECTION OF VERITAS AVENUE

NW CORNER OF SW 1/4 OF NW 1/4 OF SECTION 20, T.2S.,R.7E.



CORNER TYPE

- Government Corner Control
- Meander Property
- Rancho Other

Date of Survey November 20, 2001

COORDINATES (Optional)

N. _____
 E. _____
 Zone _____ NAD27 NAD83
 NAD83 Epoch _____
 Elev. _____
 Vert. Datum: NGVD29 NAVD88
 Meas. Units: Metric Imperial

Corner - Left as found Found and tagged Established Reestablished Rebuilt

Identification and type of corner found: Evidence used to identify or procedure used to establish or reestablish the corner.
SEE SKETCH ON BACKSIDE.

A description of the physical condition of the monument as found and as set or reset:
FOUND MONUMENT IN GOOD CONDITION. SEE SKETCH ON BACKSIDE.

SURVEYOR'S STATEMENT

This Corner Record was prepared by me or under my direction in conformance with the Land Surveyors' Act on Oct. 1, 2002.

Signed Manuel Solorio R.C.E. Number C30890

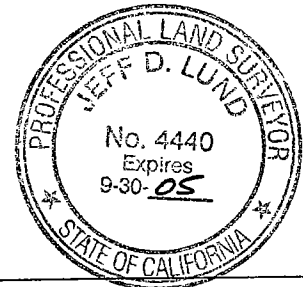


COUNTY SURVEYOR'S STATEMENT

This Corner Record was received OCT. 2, 2002 and examined and filed OCTOBER 2, 2002.

Signed [Signature] P.L.S. No. 4440

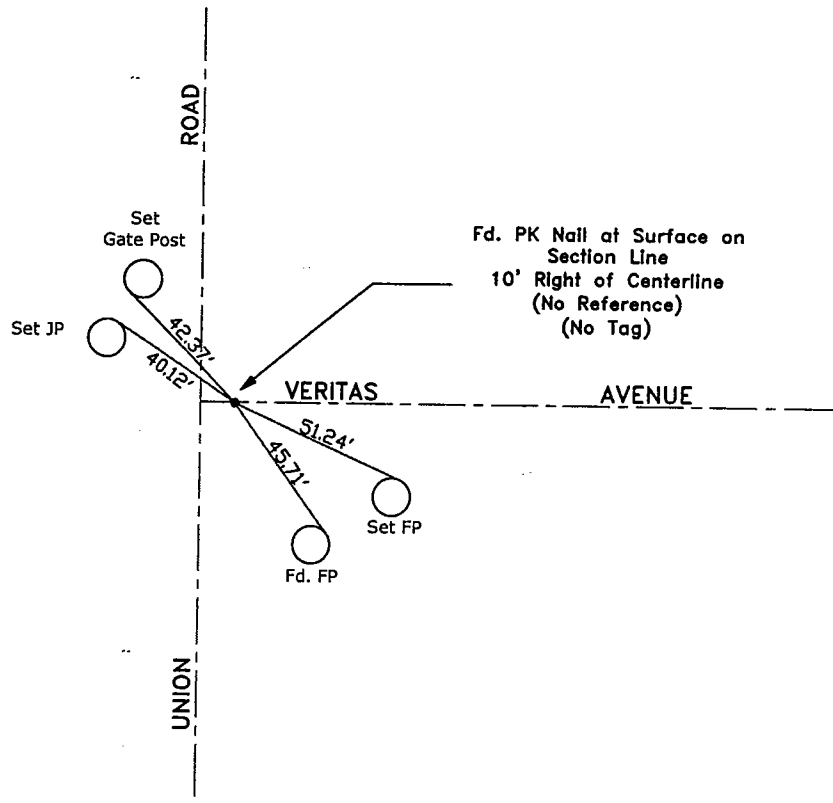
Title Assistant County Surveyor



County Surveyor's Comment
THIS CORNER RECORD IS NOT IN COMPLIANCE WITH BOARD RULE 464(c) REGARDING SUBMITTAL WITHIN 90 DAYS FROM THE DATE OF SURVEY.



N.T.S.



"No Attempt Was Made to Verify the Monument(s)"

- FP=Fence Post
- GP=Guy Post
- JP=Joint Pole
- PP=Power Pole
- SP=Service Pole
- TP=Telephone Pole
- N.T.S.=Not To Scale
- Set=Conc. Nails with Brass Washers Stamped
- "S.J. Co.", unless otherwise noted