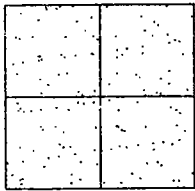


CORNER RECORD

Document Number CR-02-46  
County of San Joaquin, California

City of                     

Brief Legal Description UNION ROAD AT THE INTERSECTION OF NILE AVENUE



CORNER TYPE

- Government Corner  Control
- Meander  Property
- Rancho  Other

Date of Survey November 20, 2001

COORDINATES (Optional)

N.                       
 E.                       
 Zone                      NAD27  NAD83   
 NAD83 Epoch                       
 Elev.                       
 Vert. Datum: NGVD29  NAVD88   
 Meas Units: Metric  Imperial

Corner - Left as found  Found and tagged  Established  Reestablished  Rebuilt

Identification and type of corner found: Evidence used to identify or procedure used to establish or reestablish the corner:  
SEE SKETCH ON BACKSIDE.

A description of the physical condition of the monument as found and as set or reset:  
FOUND MONUMENT IN GOOD CONDITION. SEE SKETCH ON BACKSIDE.

SURVEYOR'S STATEMENT

This Corner Record was prepared by me or under my direction in conformance with the Land Surveyors' Act on Oct. 1, 2002.

Signed Manuel Solorio R.C.E. Number C30890



COUNTY SURVEYOR'S STATEMENT

This Corner Record was received OCT. 2, 2002 and examined and filed OCTOBER 2, 2002.

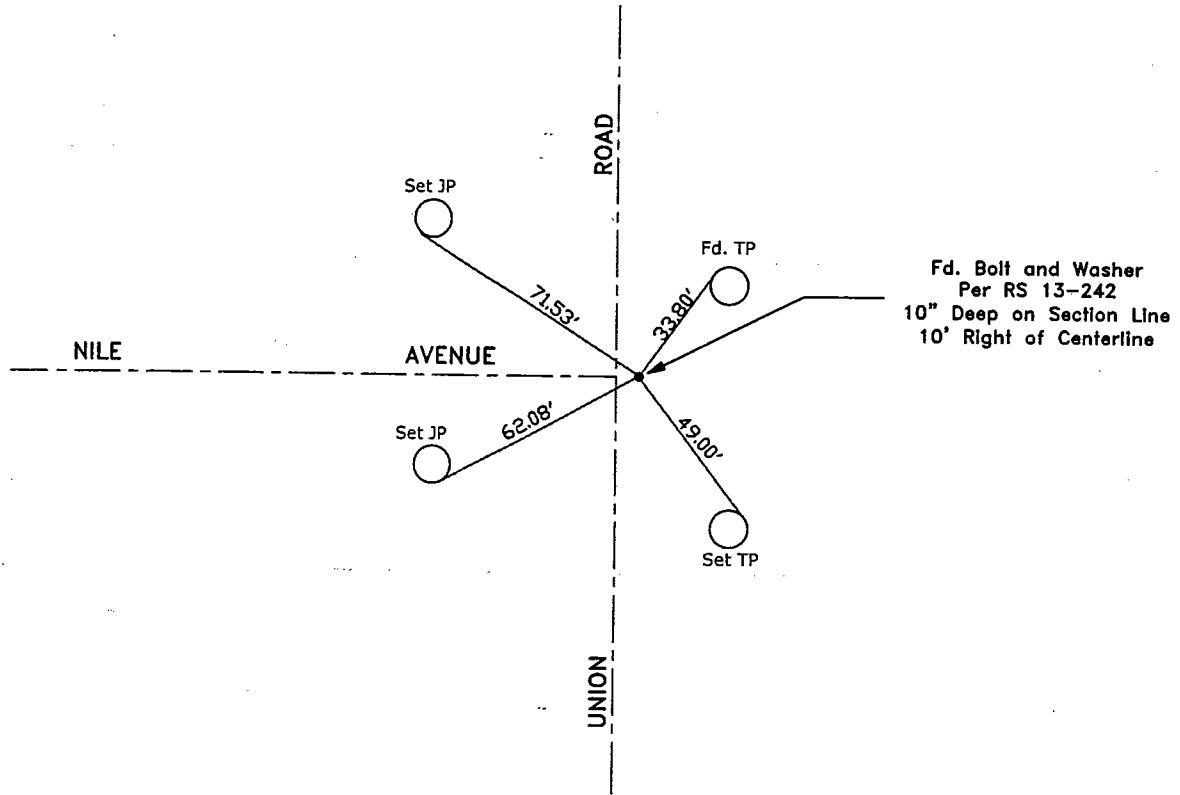
Signed Jeff Lund P.L.S. No. 4440  
Title Assistant County Surveyor



County Surveyor's Comment THIS CORNER RECORD IS NOT IN COMPLIANCE WITH BOARD RULE 464(c) REGARDING SUBMITTAL WITHIN 90 DAYS FROM THE DATE OF SURVEY.



N.T.S.



"No Attempt Was Made to Verify the Monument(s)"

FP=Fence Post  
GP=Guy Post  
JP=Joint Pole  
PP=Power Pole  
SP=Service Pole  
TP=Telephone Pole  
N.T.S.=Not To Scale  
Set=Conc. Nails with Brass Washers Stamped  
"S.J. Co.", unless otherwise noted