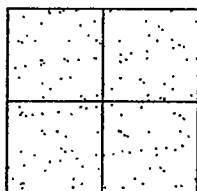


CORNER RECORD

Document Number 02-32
County of San Joaquin, California

City of _____

Brief Legal Description AIRPORT WAY 4749' ± N/O SAN JOAQUIN RIVER



CORNER TYPE

- Government Corner Control
- Meander Property
- Rancho Other

Date of Survey March 16, 2001

COORDINATES (Optional)

N. _____
 E. _____
 Zone _____ NAD27 NAD83
 NAD83 Epoch _____
 Elev. _____
 Vert. Datum: NGVD29 NAVD88
 Meas. Units: Metric Imperial

Corner - Left as found Found and tagged Established Reestablished Rebuilt

Identification and type of corner found: Evidence used to identify or procedure used to establish or reestablish the corner:
SEE SKETCH ON BACKSIDE.

A description of the physical condition of the monument as found and as set or reset:
FOUND MONUMENT IN GOOD CONDITION. SEE SKETCH ON BACKSIDE.

SURVEYOR'S STATEMENT

This Corner Record was prepared by me or under my direction in conformance with the Land Surveyors' Act on June 18, 2002.

Signed Manuel Solorio ~~LS~~ R.C.E. Number C30890



COUNTY SURVEYOR'S STATEMENT

This Corner Record was received JUNE 18, 2002 and examined and filed JUNE 19, 2002.

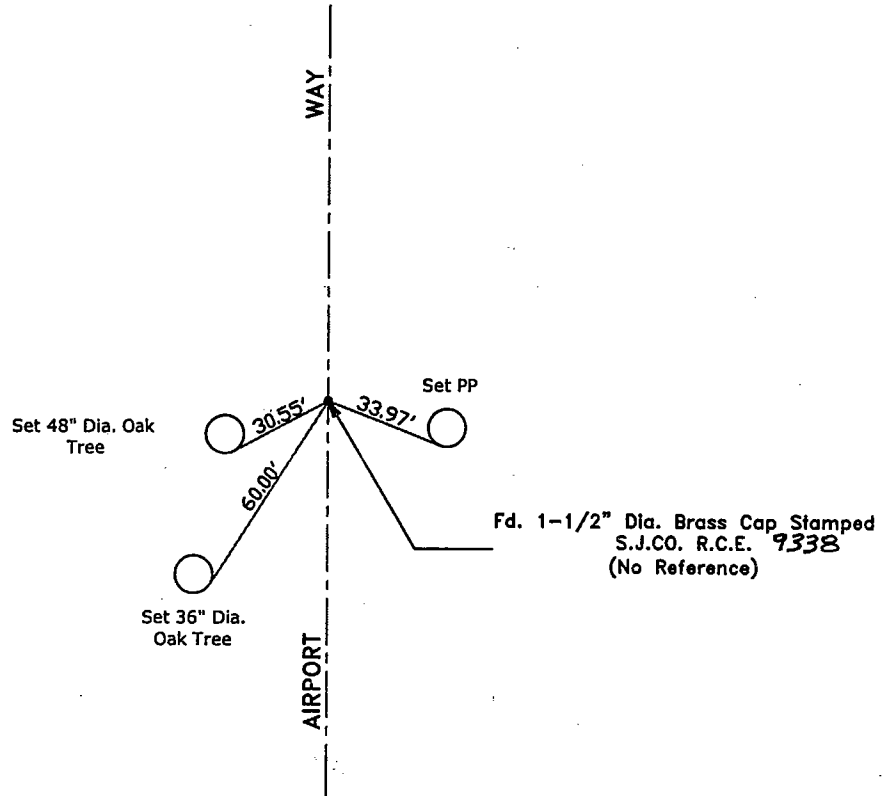
Signed Jeff Lund P.L.S. No. 4440
Title Assistant County Surveyor



County Surveyor's Comment _____
THIS CORNER RECORD IS NOT IN COMPLIANCE WITH BOARD RULE 464(c) REGARDING SUBMITTAL WITHIN 90 DAYS FROM THE DATE OF SURVEY.



N.T.S.



"No Attempt Was Made to Verify the Monument(s)"

- FP=Fence Post
- GP=Guy Post
- JP=Joint Pole
- MH=Maintenance Hole
- PP=Power Pole
- SP=Service Pole
- TP=Telephone Pole
- N.T.S.=Not To Scale
- Set=Conc. Nails with Brass Washers Stamped
"S.J. Co.", unless otherwise noted