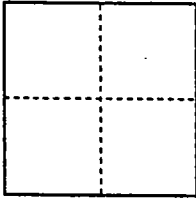


CORNER RECORD

Document Number 02-29
County of San Joaquin, California

City of _____

Brief Legal Description Southerly corner of Lot 12, CRAIG TRACT,
1 MAP 20.



CORNER TYPE

Government Corner Control
Meander Property
Rancho Other

Date of Survey JANUARY 2002

COORDINATES (Optional)

N. _____
E. _____
Zone _____ NAD27 NAD83
NAD83 Epoch _____
Elev. _____
Vert. Datum: NGVD29 NAVD88
Meas. Units: Metric Imperial

Corner - Left as found Found and tagged Established Reestablished Rebuilt

Identification and type of corner found: Evidence used to identify or procedure used to establish or reestablish the corner:

3/4" IRON PIPE, 0.3 METER BELOW ROAD SURFACE,
UNDER 0.2 METER OF PAVEMENT. FOUND BY RETRACING
COUNTY SURVEY ALONG NEWTON ROAD. SEE COUNTY FIELD
BOOK 619, PAGES 62 & 63. RECENT SURVEY ALONG
CHEROKEE ROAD WAS PERFORMED TO CONFIRM PIPE IS AT CORNER.

A description of the physical condition of the monument as found and as set or reset:

SEE SKETCH ON BACK

SURVEYOR'S STATEMENT

This Corner Record was prepared by me or under my direction in conformance with
the Land Surveyors' Act on MAY 13th, 2002.

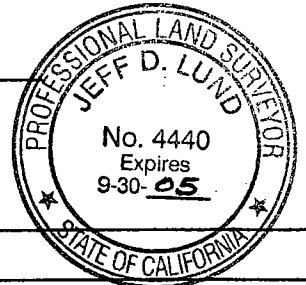
Signed Daniel H. Thorpe L.S. or R.C.E. Number 6455



COUNTY SURVEYOR'S STATEMENT

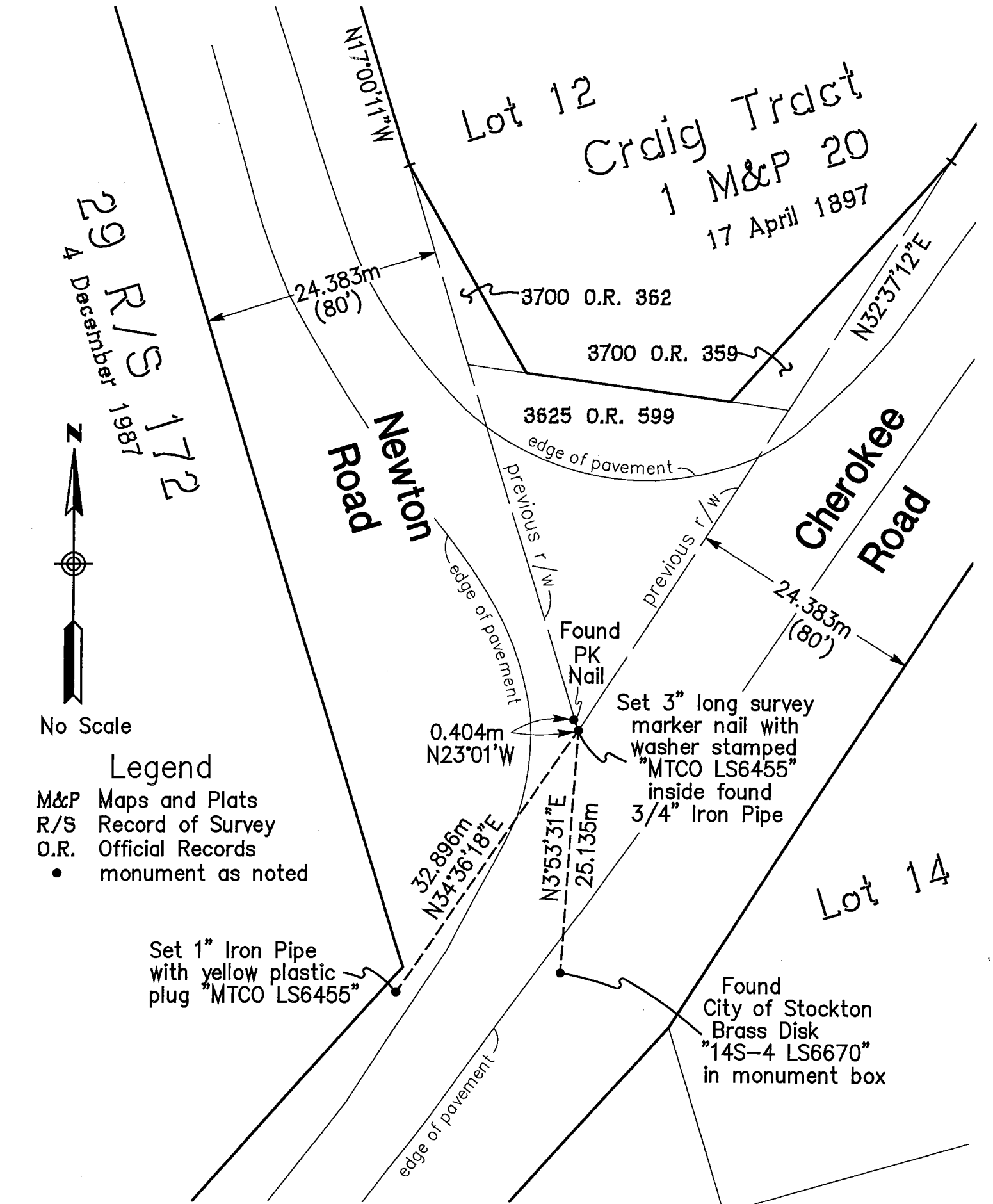
This Corner Record was received MAY 21, 2002 and examined
and filed MAY 31, 2002.

Signed Jeff Lund L.S. No. 4440
Title ASSISTANT County Surveyor



County Surveyor's Comment _____

(D.D. Sheet No. 32A)



No Scale

Legend

- M&P Maps and Plats
- R/S Record of Survey
- O.R. Official Records
- monument as noted

BEARINGS AND DISTANCES SHOWN ARE BASED ON THE CALIFORNIA COORDINATE SYSTEM OF 1983, ZONE 3. DISTANCES ARE IN METERS UNLESS OTHERWISE NOTED. MULTIPLY DISTANCES SHOWN BY 1.00006 TO OBTAIN GROUND LEVEL DISTANCES. TO CONVERT METERS TO THE U.S. SURVEY FOOT, MULTIPLY DISTANCES BY 3937/1200.