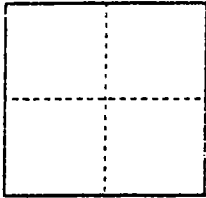


CORNER RECORD

City of N/A

Document Number 02-25
County of San Joaquin, California

Brief Legal Description Record of Survey 23-83



CORNER TYPE

Government Corner Control
Meander Property
Rancho Other
Date of Survey July 6, 2001

COORDINATES (Optional)

N. _____
E. _____
Zone _____ NAD27 NAD83
NAD83 Epoch _____
Elev. _____
Vert. Datum: NGVD29 NAVD88
Meas. Units: Metric Imperial

Corner - Left as found Found and tagged Established Reestablished Rebuilt

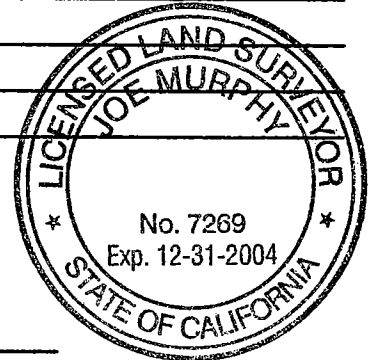
Identification and type of corner found: Evidence used to identify or procedure used to establish or reestablish the corner.
Reset corner as shown in the location indicated on corner record 02-15.

A description of the physical condition of the monument as found and as set or reset: Set 3/4" x 30"
iron rod capped and stamped L.S. 7269.

SURVEYOR'S STATEMENT

This Corner Record was prepared by me or under my direction in conformance with the Land Surveyors' Act on April 5, 2002.

Signed Joe Murphy L.S. ~~7269~~ Number 7269



COUNTY SURVEYOR'S STATEMENT

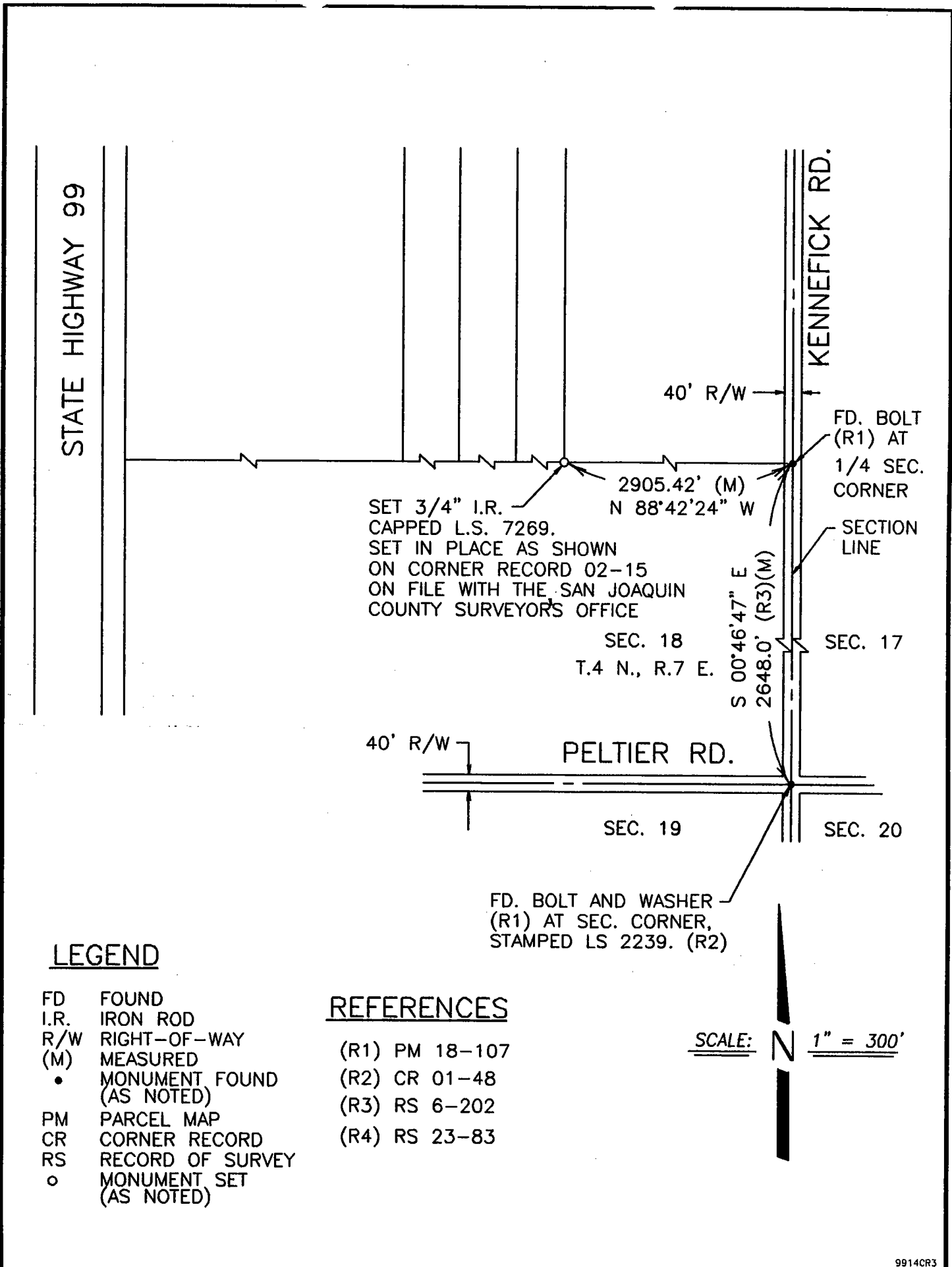
This Corner Record was received APRIL 10, 2002 and examined and filed APRIL 17, 2002.

Signed Jeff Lund P.L.S. No. 4440

Title Assistant County Surveyor



County Surveyor's Comment _____



STATE HIGHWAY 99

KENNEFICK RD.

40' R/W

FD. BOLT (R1) AT 1/4 SEC. CORNER

SET 3/4" I.R. CAPPED L.S. 7269. SET IN PLACE AS SHOWN ON CORNER RECORD 02-15 ON FILE WITH THE SAN JOAQUIN COUNTY SURVEYOR'S OFFICE

2905.42' (M) N 88°42'24" W

SECTION LINE

SEC. 18

T.4 N., R.7 E.

S 00°46'47" E 2648.0' (R3)(M)

SEC. 17

40' R/W

PELTIER RD.

SEC. 19

SEC. 20

FD. BOLT AND WASHER (R1) AT SEC. CORNER, STAMPED LS 2239. (R2)

LEGEND

- FD FOUND
- I.R. IRON ROD
- R/W RIGHT-OF-WAY
- (M) MEASURED
- MONUMENT FOUND (AS NOTED)
- PM PARCEL MAP
- CR CORNER RECORD
- RS RECORD OF SURVEY
- MONUMENT SET (AS NOTED)

REFERENCES

- (R1) PM 18-107
- (R2) CR 01-48
- (R3) RS 6-202
- (R4) RS 23-83

SCALE: N 1" = 300'

