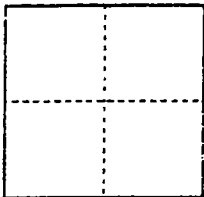


**CORNER RECORD**

City of N/A

Document Number 02-24  
County of San Joaquin, California

Brief Legal Description Record of Survey 23-83



**CORNER TYPE**

- Government Corner  Control
- Meander  Property
- Rancho  Other

Date of Survey July 6, 2001

**COORDINATES (Optional)**

N. \_\_\_\_\_  
 E. \_\_\_\_\_  
 Zone \_\_\_\_\_ NAD27  NAD83   
 NAD83 Epoch \_\_\_\_\_  
 Elev. \_\_\_\_\_  
 Vert. Datum: NGVD29  NAVD88   
 Meas. Units: Metric  Imperial

Corner - Left as found  Found and tagged  Established  Reestablished  Rebuilt

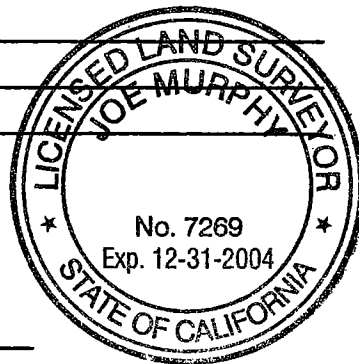
Identification and type of corner found: Evidence used to identify or procedure used to establish or reestablish the corner:  
Reset corner as shown in the location indicated on corner record 02-14.

A description of the physical condition of the monument as found and as set or reset: Set 3/4" x 30"  
iron rod capped and stamped L.S. 7269.

**SURVEYOR'S STATEMENT**

This Corner Record was prepared by me or under my direction in conformance with the Land Surveyors' Act on April 5, 2002.

Signed [Signature] L.S. ~~7269~~ Number 7269



**COUNTY SURVEYOR'S STATEMENT**

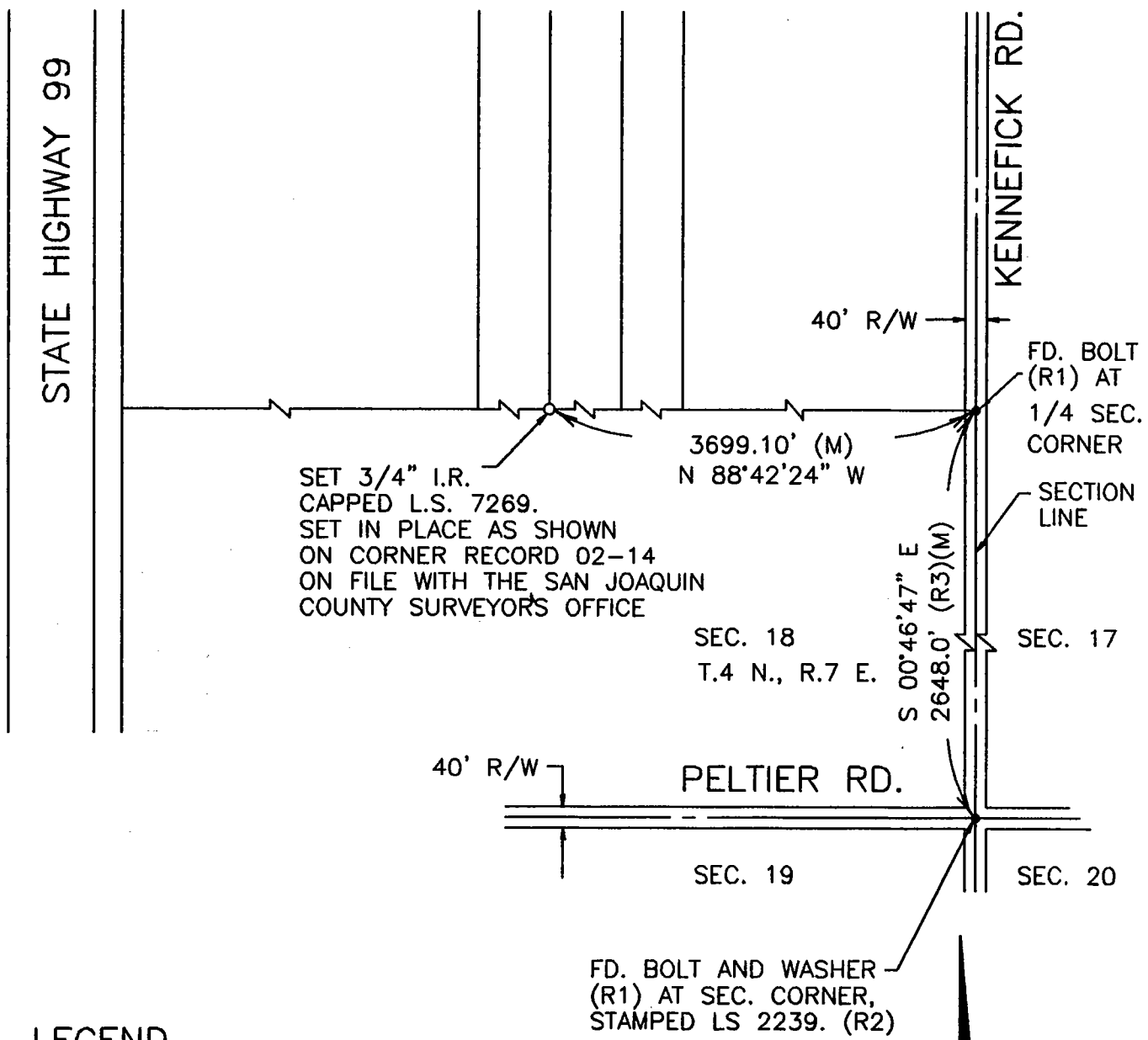
This Corner Record was received APRIL 10, 2002 and examined and filed APRIL 17, 2002.

Signed [Signature] P.L.S. No. 4440

Title Assistant County Surveyor



County Surveyor's Comment \_\_\_\_\_



LEGEND

- FD FOUND
- I.R. IRON ROD
- R/W RIGHT-OF-WAY
- (M) MEASURED
- MONUMENT FOUND (AS NOTED)
- PM PARCEL MAP
- CR CORNER RECORD
- RS RECORD OF SURVEY
- MONUMENT SET (AS NOTED)

REFERENCES

- (R1) PM 18-107
- (R2) CR 01-48
- (R3) RS 6-202
- (R4) RS 23-83

