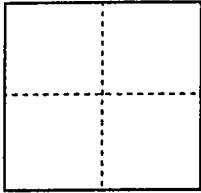


CORNER RECORD

City of N/A

Document Number 02-15
County of San Joaquin, California

Brief Legal Description Record of Survey 23-83



CORNER TYPE

Government Corner Control
Meander Property
Rancho Other

Date of Survey 4/4/99

COORDINATES (Optional)

N. _____
E. _____
Zone _____ NAD27 NAD83
NAD83 Epoch _____
Elev. _____
Vert. Datum: NGVD29 NAVD88
Meas. Units: Metric Imperial

Corner - Left as found Found and tagged Established Reestablished Rebuilt

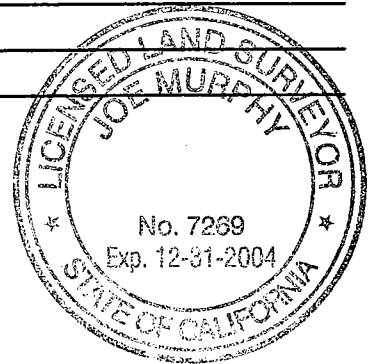
Identification and type of corner found: Evidence used to identify or procedure used to establish or reestablish the corner:
Found 3/4" iron rod, no tag. I did not file this corner record in conformance with Board Rule 464(c) regarding time of when the monument was found as I had no anticipation of it being destroyed.

A description of the physical condition of the monument as found and as set or reset: _____

SURVEYOR'S STATEMENT

This Corner Record was prepared by me or under my direction in conformance with the Land Surveyors' Act on March 1, 2002.

Signed Joe Murphy L.S. ~~XXXXXX~~ Number 7269



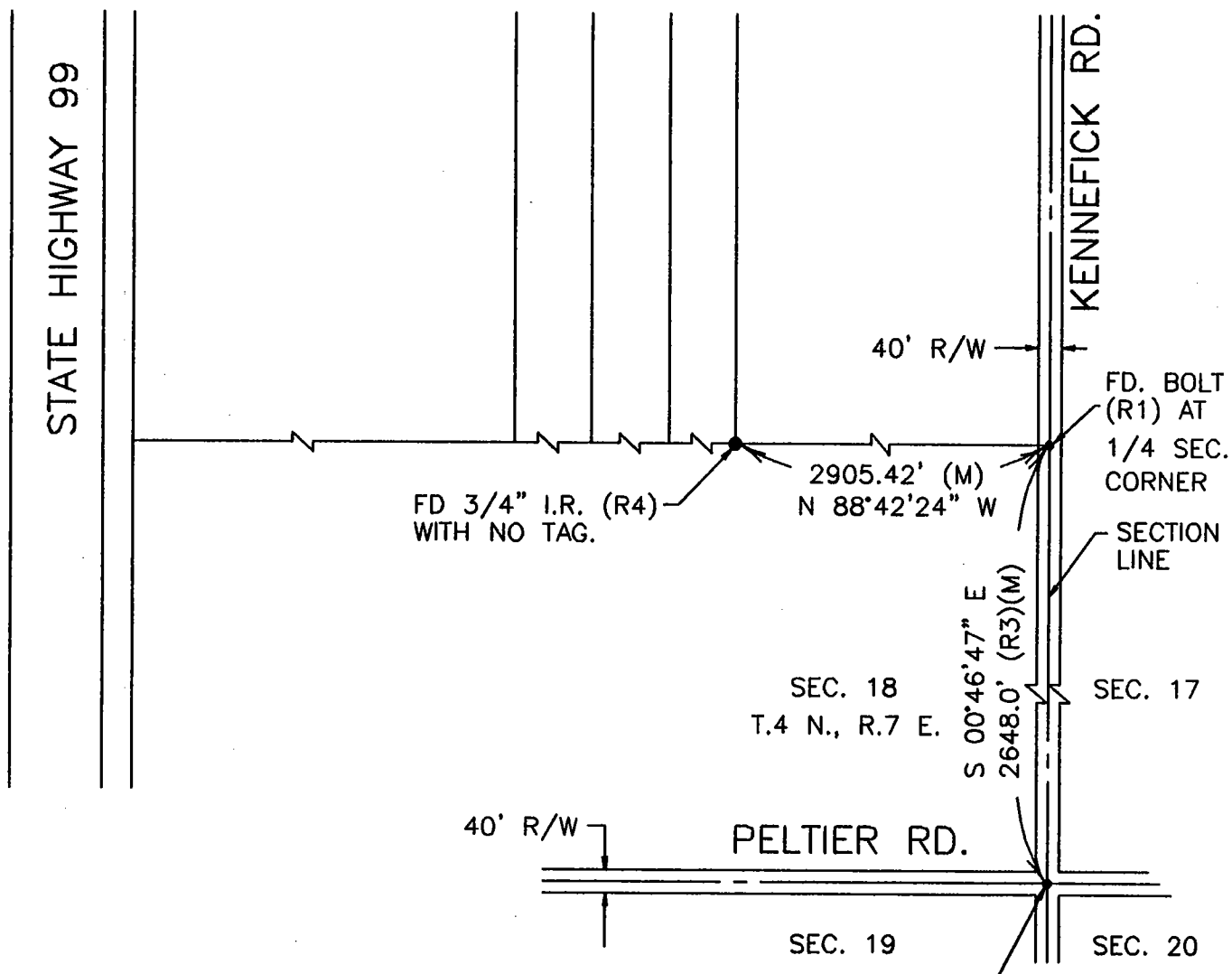
COUNTY SURVEYOR'S STATEMENT

This Corner Record was received MARCH 1, 2002 and examined and filed MARCH 5, 2002.

Signed Jay Bond L.S. No. 4440
Title ASSISTANT County Surveyor

County Surveyors Comment _____

(D.D. Sheet No. 11)



LEGEND

- FD FOUND
- I.R. IRON ROD
- R/W RIGHT-OF-WAY
- (M) MEASURED
- MONUMENT FOUND (AS NOTED)
- PM PARCEL MAP
- CR CORNER RECORD
- RS RECORD OF SURVEY

REFERENCES

- (R1) PM 18-107
- (R2) CR 01-48
- (R3) RS 6-202
- (R4) RS 23-83

