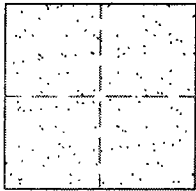


CORNER RECORD

Document Number 02-11  
County of San Joaquin, California

City of \_\_\_\_\_

Brief Legal Description MICHIGAN AVENUE AT THE INTERSECTION OF LASSEN AVE.



CORNER TYPE

Government Corner  Control   
Meander  Property   
Rancho  Other

Date of Survey NOVEMBER 20, 2001

COORDINATES (Optional)

N. \_\_\_\_\_  
E. \_\_\_\_\_  
Zone \_\_\_\_\_ NAD27  NAD83   
NAD83 Epoch \_\_\_\_\_  
Elev. \_\_\_\_\_  
Vert. Datum: NGVD29  NAVD88   
Meas. Units: Metric  Imperial

Corner - Left as found  Found and tagged  Established  Reestablished  Rebuilt

Identification and type of corner found: Evidence used to identify or procedure used to establish or reestablish the corner:  
SET PK NAIL AND WASHER STAMPED "S.J. CO.". REESTABLISHED LOCATION PER SWING TIES ON CR-00-193. SEE SKETCH ON BACKSIDE.

A description of the physical condition of the monument as found and as set or reset: \_\_\_\_\_  
SET MONUMENT. SEE SKETCH ON BACKSIDE.

SURVEYOR'S STATEMENT

This Corner Record was prepared by me or under my direction in conformance with the Land Surveyors' Act on February 15, 2002.

Signed Manuel Solorio L.S. or R.C.E. Number C30890

COUNTY SURVEYOR'S STATEMENT

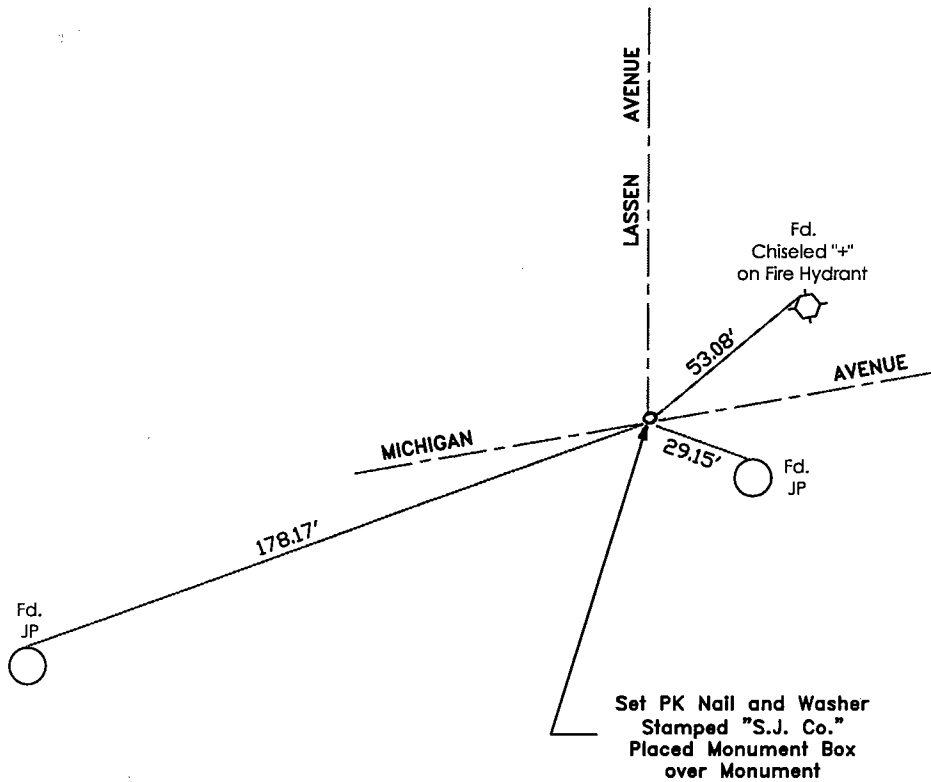
This Corner Record was received February 20<sup>th</sup>, 2002 and examined and filed February 21, 2002.

Signed Jeff Lund L.S. or R.C.E. No. 4440

For: Title \_\_\_\_\_ County Surveyor

County Surveyor's Comment \_\_\_\_\_





"No Attempt Was Made To Verify Monument(s)"

- FP=Fence Post
- GP=Guy Post
- JP=Joint Pole
- PP=Power Pole
- SP=Service Pole
- TP=Telephone Pole
- N.T.S.=Not To Scale
- Fd.=Conc. Nails with Brass Washers Stamped "S.J. Co.", unless otherwise noted