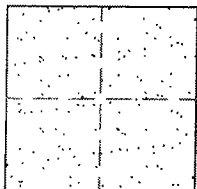


CORNER RECORD

Document Number 02-3
County of San Joaquin, California

City of _____

Brief Legal Description JAHANT ROAD 3400' ± E/O LINN ROAD



CORNER TYPE

Government Corner Control
Meander Property
Rancho Other

Date of Survey OCTOBER 15, 2001

COORDINATES (Optional)

N. _____
E. _____
Zone _____ NAD27 NAD83
NAD83 Epoch _____
Elev. _____
Vert. Datum: NGVD29 NAVD88
Meas. Units: Metric Imperial

Corner - Left as found Found and tagged Established Reestablished Rebuilt

Identification and type of corner found: Evidence used to identify or procedure used to establish or reestablish the corner:
SET WITH PK NAIL AND WASHER STAMPED "S.J. CO.". CONFIRMED LOCATION PER SWING TIES ON CR-01-121. SEE SKETCH ON BACKSIDE.

A description of the physical condition of the monument as found and as set or reset:
SET MONUMENT. SEE SKETCH ON BACKSIDE.

SURVEYOR'S STATEMENT

This Corner Record was prepared by me or under my direction in conformance with the Land Surveyors' Act on February 15, 2002.

Signed Manuel Solero L.S. or R.C.E. Number C30890



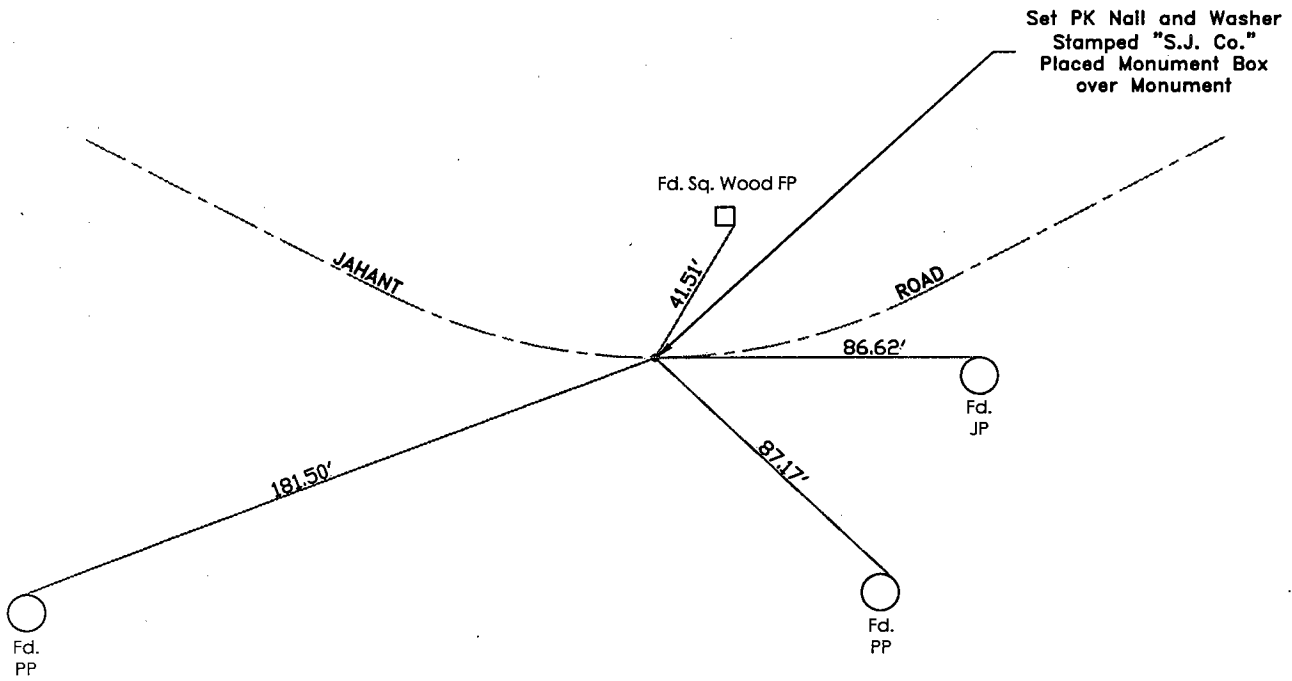
COUNTY SURVEYOR'S STATEMENT

This Corner Record was received February 20th, 2002 and examined and filed February 21, 2002.

Signed Jeff Lund L.S. R.C.E. No. 4440
For: Title County Surveyor



County Surveyor's Comment
THIS CORNER RECORD IS NOT IN COMPLIANCE WITH BOARD RULE 464(c) REGARDING SUBMITTAL WITHIN 90 DAYS FROM THE DATE OF SURVEY.



"No Attempt Was Made To Verify Monument(s)"

- FP=Fence Post
- GP=Guy Post
- JP=Joint Pole
- PP=Power Pole
- SP=Service Pole
- TP=Telephone Pole
- N.T.S.=Not To Scale
- Fd.=Conc. Nails with Brass Washers Stamped "S.J. Co.", unless otherwise noted