

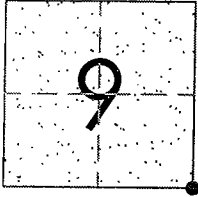
CORNER RECORD

City of \_\_\_\_\_

Document number 02-2  
County of San Joaquin, California

Brief Legal Description JAHANT ROAD 2500' ± E/O LINN RD.

SE CORNER OF SECTION 9, T.4N., R.8E.



CORNER TYPE

- Government Corner  Control
- Meander  Property
- Rancho  Other

Date of Survey OCTOBER 15, 2001

COORDINATES (Optional)

N. \_\_\_\_\_  
 E. \_\_\_\_\_  
 Zone \_\_\_\_\_ NAD27  NAD83   
 NAD83 Epoch \_\_\_\_\_  
 Elev. \_\_\_\_\_  
 Vert. Datum: NGVD29  NAVD88   
 Meas. Units: Metric  Imperial

Corner - Left as found  Found and tagged  Established  Reestablished  Rebuilt

Identification and type of corner found: Evidence used to identify or procedure used to establish or reestablish the corner:  
FOUND TWO MONUMENTS (BOTH PIN/WASHER). CONFIRMED LOCATION PER SWING TIES ON CR-01-122. SEE SKETCH ON BACKSIDE.

A description of the physical condition of the monument as found and as set or reset:  
FOUND MONUMENTS IN GOOD CONDITION. SEE SKETCH ON BACKSIDE.

SURVEYOR'S STATEMENT

This Corner Record was prepared by me or under my direction in conformance with the Land Surveyors' Act on February 15, 2002.

Signed Manuel Solerio L.S. or R.C.E. Number C30890

COUNTY SURVEYOR'S STATEMENT

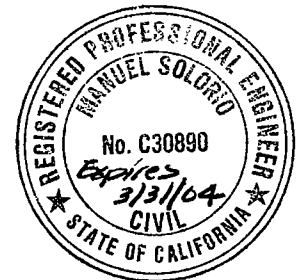
This Corner Record was received February 20<sup>th</sup>, 2002 and examined and filed February 21, 2002.

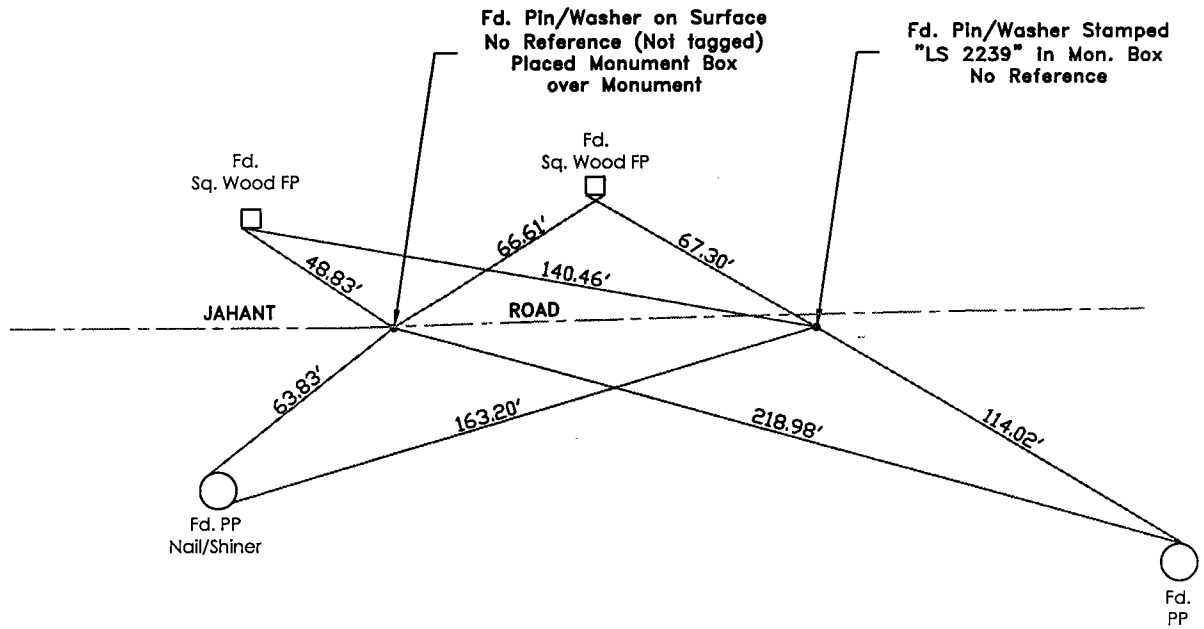
Signed Jeff Lund L.S. R.C.E. No. 4440

For Title \_\_\_\_\_ County Surveyor

County Surveyor's Comment \_\_\_\_\_

THIS CORNER RECORD IS NOT IN COMPLIANCE WITH BOARD RULE 464(c) REGARDING SUBMITTAL WITHIN 90 DAYS FROM THE DATE OF SURVEY.





"No Attempt Was Made To Verify Monument(s)"

- FP=Fence Post
- GP=Guy Post
- JP=Joint Pole
- PP=Power Pole
- SP=Service Pole
- TP=Telephone Pole
- N.T.S.=Not To Scale
- Fd.=Conc. Nails with Brass Washers Stamped "S.J. Co.", unless otherwise noted