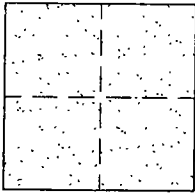


CORNER RECORD

Document Number 01-199
County of San Joaquin, California

City of _____

Brief Legal Description COPPEROPOLIS ROAD AT THE INTERSECTION OF REID AVE.



CORNER TYPE

- Government Corner Control
- Meander Property
- Rancho Other

Date of Survey OCTOBER 16, 2001

COORDINATES (Optional)

N. _____
 E. _____
 Zone _____ NAD27 NAD83
 NAD83 Epoch _____
 Elev. _____
 Vert. Datum: NGVD29 NAVD88
 Meas. Units: Metric Imperial

Corner - Left as found Found and tagged Established Reestablished Rebuilt

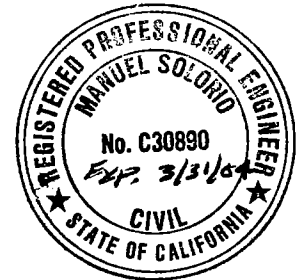
Identification and type of corner found: Evidence used to identify or procedure used to establish or reestablish the corner:
SET PK NAIL AND WASHER STAMPED "S.J. CO.". REESTABLISHED LOCATION PER SWING TIES ON CR-00-296. SEE SKETCH ON BACKSIDE.

A description of the physical condition of the monument as found and as set or reset:
SET MONUMENT. SEE SKETCH ON BACKSIDE.

SURVEYOR'S STATEMENT

This Corner Record was prepared by me or under my direction in conformance with the Land Surveyors' Act on DECEMBER 14, 2001.

Signed Manuel Solorio L.S. or R.C.E. Number C30890



COUNTY SURVEYOR'S STATEMENT

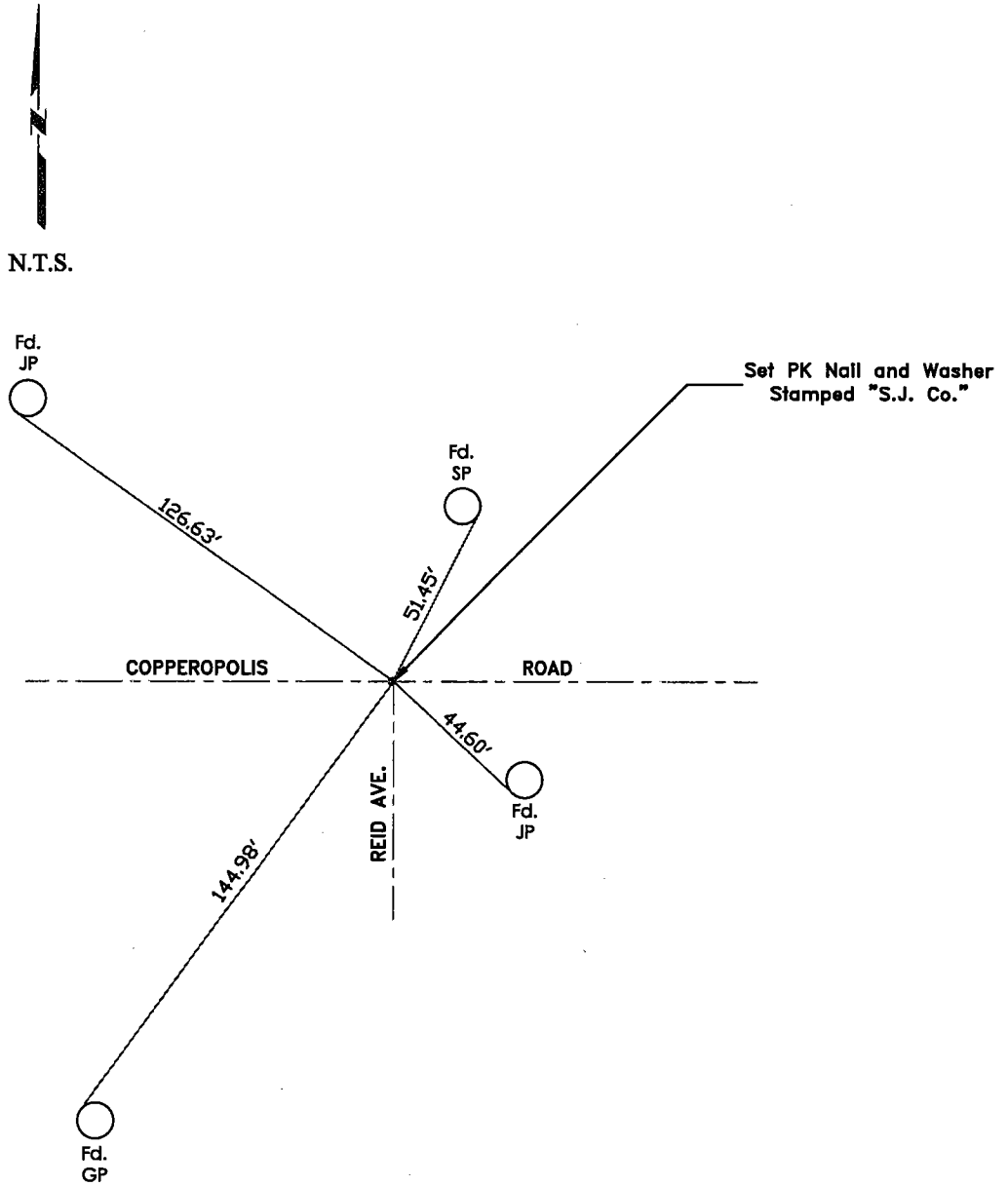
This Corner Record was received December 21, 2001 and examined and filed DECEMBER, 2001.

Signed Jeff Lund L.S. R.C.E. No. 4440

Title Interim County Surveyor



County Surveyor's Comment _____



"No Attempt Was Made To Verify Monument(s)"

- FP=Fence Post
- GP=Guy Post
- JP=Joint Pole
- PP=Power Pole
- SP=Service Pole
- TP=Telephone Pole
- N.T.S.=Not To Scale
- Fd.=Conc. Nails with Brass Washers Stamped "S.J. Co.", unless otherwise noted