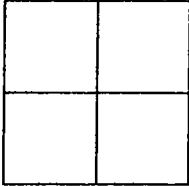


CORNER RECORD

Document Number 01-196

City of STOCKTON County of SAN JOAQUIN, California

Brief Legal Description FRESNO AVENUE AT WASHINGTON STREET
BOOK 32 OF SURVEYS, PAGE 49, SAN JOAQUIN COUNTY RECORDS



Government Corner Control
Meander Property
Rancho Other
Date of Survey 10-10-01

COORDINATES (Optional)
N. 2168120.837
E. 6327241.409
Zone 3 NAD27 NAD83
NAD83 Epoch 1991.35
Elev. 5.385
Vert. Datum: NGVD29 NAVD88
Meas. Units: Metric Imperial

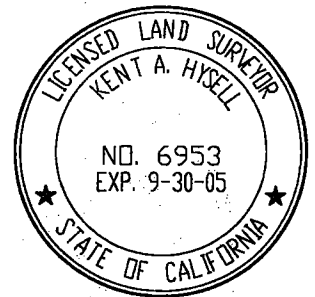
Corner - Left as found Found and tagged Established Reestablished Rebuilt

Identification and type of corner found: Evidence used to identify or procedure used to establish or reestablished the corner:
BRASS DISK STAMPED "7S-5" IN MONUMENT BOX MARKING THE CITY OF STOCKTON CONTROL MONUMENT
AT THE INTERSECTION OF FRESNO AVE. AND WASHINGTON ST. AS SHOWN FOR RECORD IN BOOK 29 OF
SURVEYS AT PAGE 61, SAN JOAQUIN COUNTY RECORDS WAS DESTROYED DUE TO PAVEMENT RECONSTRUCTION.
MONUMENT WAS RE-ESTABLISHED USING THE SWING TIES SET PRIOR TO THE MONUMENT BEING DESTROYED
AS SHOWN ON PREVIOUS CORNER RECORD. 01-116.

A description of the physical condition of the monument as found and as set or reset:
SET 2 1/2" BRASS DISK STAMPED "7S-5 RESET", "10-2001", "LS6953" AND "CITY OF STOCKTON
SURVEY MONUMENT" IN MONUMENT WELL.

This Corner Record was prepared by me or under my direction in conformance with the Land Surveyors' Act on OCTOBER 17, 2001.

Signed [Signature] L.S. 6953

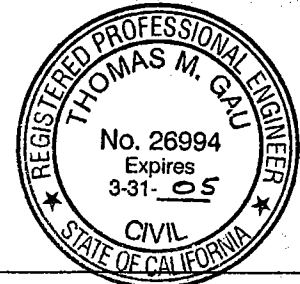


COUNTY SURVEYOR'S STATEMENT

This Corner Record was received OCTOBER 30, 2001 and examined and filed NOVEMBER 19, 2001.

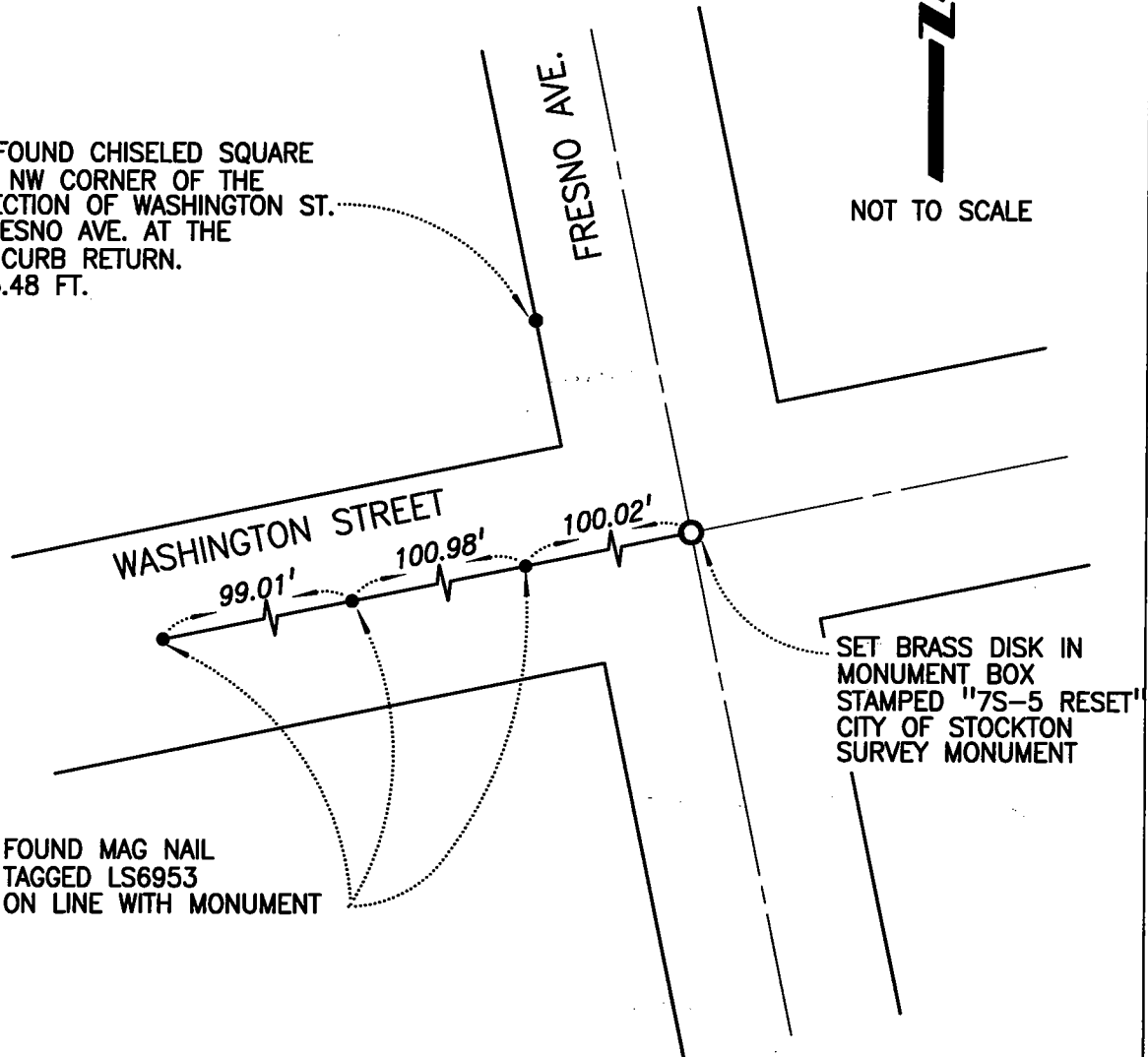
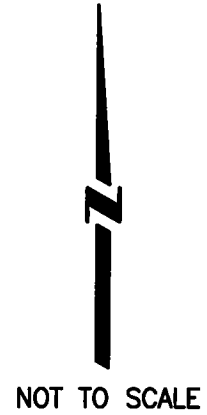
Signed [Signature] R.C.E. No. 26994

Title INTERIM County Surveyor



County Surveyor's Comment _____

TBM: FOUND CHISELED SQUARE
AT THE NW CORNER OF THE
INTERSECTION OF WASHINGTON ST.
AND FRESNO AVE. AT THE
NORTH CURB RETURN.
ELEV. 5.48 FT.



FOUND MAG NAIL
TAGGED LS6953
ON LINE WITH MONUMENT

SET BRASS DISK IN
MONUMENT BOX
STAMPED "7S-5 RESET"
CITY OF STOCKTON
SURVEY MONUMENT

NOTE: SET MONUMENT IS NOT
VERIFIED AS BEING THE CENTERLINE
OF THE STREET RIGHTS-OF-WAY.