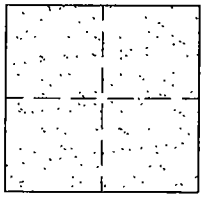


CORNER RECORD

Document Number CR-01-188
County of San Joaquin, California

City of _____

Brief Legal Description TRACY BOULEVARD 2147' ± E/O LAMMERS RD.



CORNER TYPE

Government Corner Control
Meander Property
Rancho Other
Date of Survey OCTOBER 9, 2001

COORDINATES (Optional)

N. _____
E. _____
Zone _____ NAD27 NAD83
NAD83 Epoch _____
Elev. _____
Vert. Datum: NGVD29 NAVD88
Meas. Units: Metric Imperial

Corner - Left as found Found and tagged Established Reestablished Rebuilt

Identification and type of corner found: Evidence used to identify or procedure used to establish or reestablish the corner:
FOUND PIN/WASHER. CONFIRMED LOCATION PER SWING TIES ON CR-01-65. SEE SKETCH ON BACKSIDE.

A description of the physical condition of the monument as found and as set or reset:
FOUND MONUMENT IN GOOD CONDITION. SEE SKETCH ON BACKSIDE.

SURVEYOR'S STATEMENT

This Corner Record was prepared by me or under my direction in conformance with the Land Surveyors' Act on OCTOBER 29, 2001.

Signed Manuel Solorio L.S. of R.C.E. Number C 30890
~~63056~~



COUNTY SURVEYOR'S STATEMENT

This Corner Record was received October 30, 2001 and examined and filed November 7, 2001.

Signed Thomas M. Gall R.C.E. No. 26994

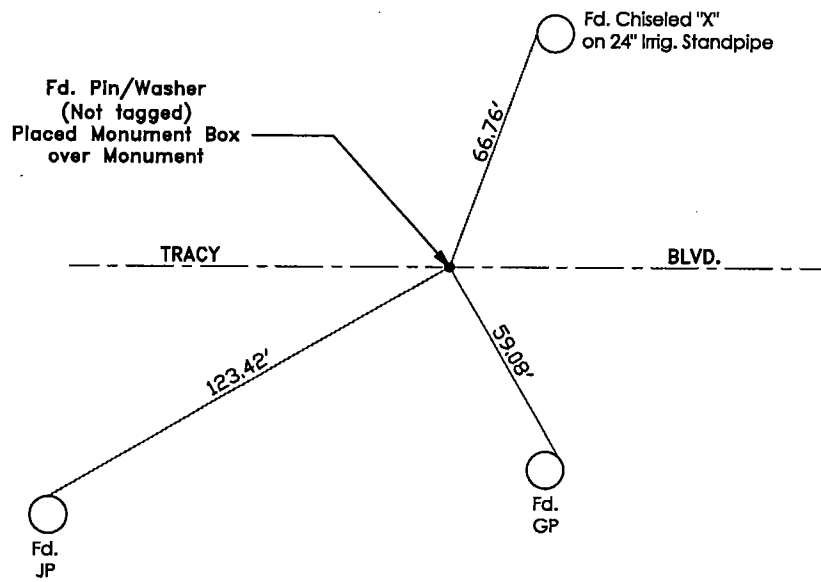
For Title Interim County Surveyor



County Surveyor's Comment _____



N.T.S.



"No Attempt Was Made To Verify Monument(s)"

FP=Fence Post

GP=Guy Post

JP=Joint Pole

PP=Power Pole

SP=Service Pole

TP=Telephone Pole

N.T.S.=Not To Scale

Fd.=Conc. Nails with Brass Washers Stamped

"S.J. Co.", unless otherwise noted