

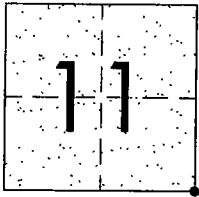
CORNER RECORD

Document Number CR-01-155

City of \_\_\_\_\_

County of San Joaquin, California

Brief Legal Description VAN ALLEN ROAD AT THE INTERSECTION OF DODDS RD. AND SE CORNER OF SECTION 11, T.1S.,R.8E.



CORNER TYPE

- Government Corner  Control
- Meander  Property
- Rancho  Other

Date of Survey OCTOBER 3, 2001

COORDINATES (Optional)

N. \_\_\_\_\_  
 E. \_\_\_\_\_  
 Zone \_\_\_\_\_ NAD27  NAD83   
 NAD83 Epoch \_\_\_\_\_  
 Elev. \_\_\_\_\_  
 Vert. Datum: NGVD29  NAVD88   
 Meas. Units: Metric  Imperial

Corner - Left as found  Found and tagged  Established  Reestablished  Rebuilt

Identification and type of corner found: Evidence used to identify or procedure used to establish or reestablish the corner: FOUND RAILROAD SPIKE. CONFIRMED LOCATION PER SWING TIES ON CR-01-26. SEE SKETCH ON BACKSIDE.

A description of the physical condition of the monument as found and as set or reset: FOUND MONUMENT IN GOOD CONDITION. SEE SKETCH ON BACKSIDE.

SURVEYOR'S STATEMENT

This Corner Record was prepared by me or under my direction in conformance with the Land Surveyors' Act on OCTOBER 29, 2001.

Signed Manuel Solario L.S. or R.C.E. Number C30890



COUNTY SURVEYOR'S STATEMENT

This Corner Record was received October 30, 2001 and examined and filed November 7, 2001.

Signed Thomas M. Gau R.C.E. No. 26994

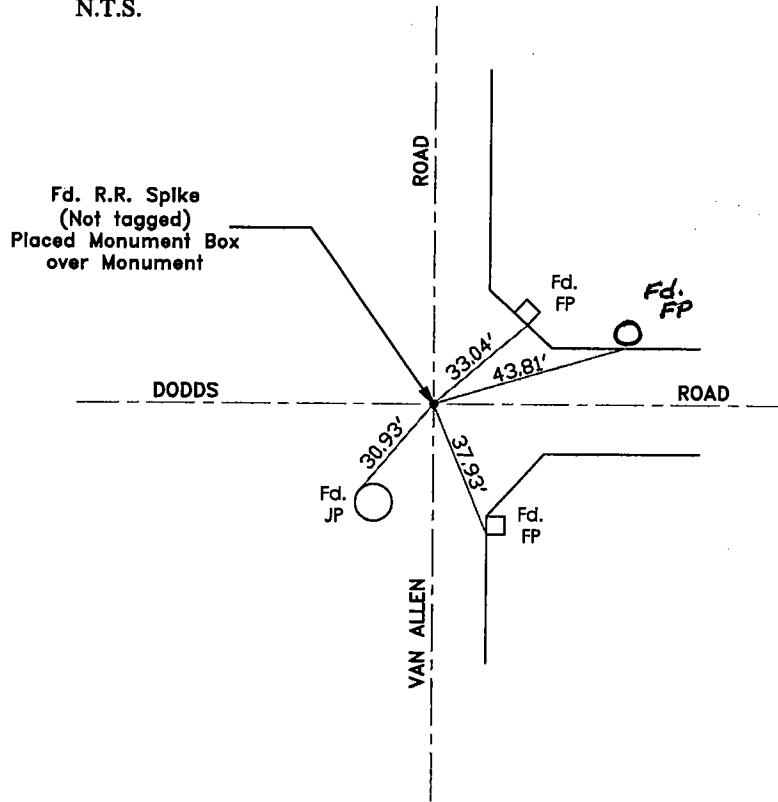
For Title Interim County Surveyor



County Surveyor's Comment \_\_\_\_\_



N.T.S.



"No Attempt Was Made To Verify Monument(s)"

FP=Fence Post

GP=Guy Post

JP=Joint Pole

PP=Power Pole

SP=Service Pole

TP=Telephone Pole

N.T.S.=Not To Scale

Fd.=Conc. Nails with Brass Washers Stamped

"S.J. Co.", unless otherwise noted