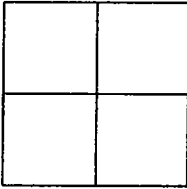


CORNER RECORD

Document Number 01-115

City of STOCKTON County of SAN JOAQUIN, California

Brief Legal Description FRESNO AVENUE AT HARBOR STREET  
BOOK 29 OF SURVEYS, PAGE 61, SAN JOAQUIN COUNTY RECORDS



Government Corner  Control   
Meander  Property   
Rancho  Other   
Date of Survey 7-18-01

**COORDINATES (Optional)**  
N. 2168580.138  
E. 6327146.490  
Zone 3 NAD27  NAD83   
NAD83 Epoch 1991.35  
Elev. 4.67  
Vert. Datum: NGVD29  NAVD88   
Meas. Units: Metric  Imperial

Corner - Left as found  Found and tagged  Established  Reestablished  Rebuilt

Identification and type of corner found: Evidence used to identify or procedure used to establish or reestablished the corner:  
FOUND BRASS DISK STAMPED "7S-4" IN MONUMENT BOX MARKING THE CITY OF STOCKTON

CONTROL MONUMENT AT THE INTERSECTION OF FRESNO AVE. AND HARBOR ST. AS SHOWN FOR RECORD  
IN BOOK 29 OF SURVEYS AT PAGE 61, SAN JOAQUIN COUNTY RECORDS PRIOR TO BEING DESTROYED.  
COORDINATES SHOWN ABOVE ARE BASED ON BOOK 33 OF SURVEYS AT PAGE 20. ELEVATION SHOWN IS  
BASED ON THE CITY OF STOCKTON BENCHMARK LISTING REVISED MARCH 2000.

A description of the physical condition of the monument as found and as set or reset: \_\_\_\_\_  
THE MONUMENT WILL BE DESTROYED DUE TO PAVEMENT RECONSTRUCTION.  
SET NAILS TAGGED LS6953 AS SHOWN ON SKETCH.

This Corner Record was prepared by me or under my direction in conformance with the Land Surveyors' Act on August 16, 2001.

Signed [Signature] L.S. 6953



COUNTY SURVEYOR'S STATEMENT

This Corner Record was received SEPT. 7, 2001 and examined and filed October 2, 2001.

Signed Thomas M. Gau R.C.E. No. 26994

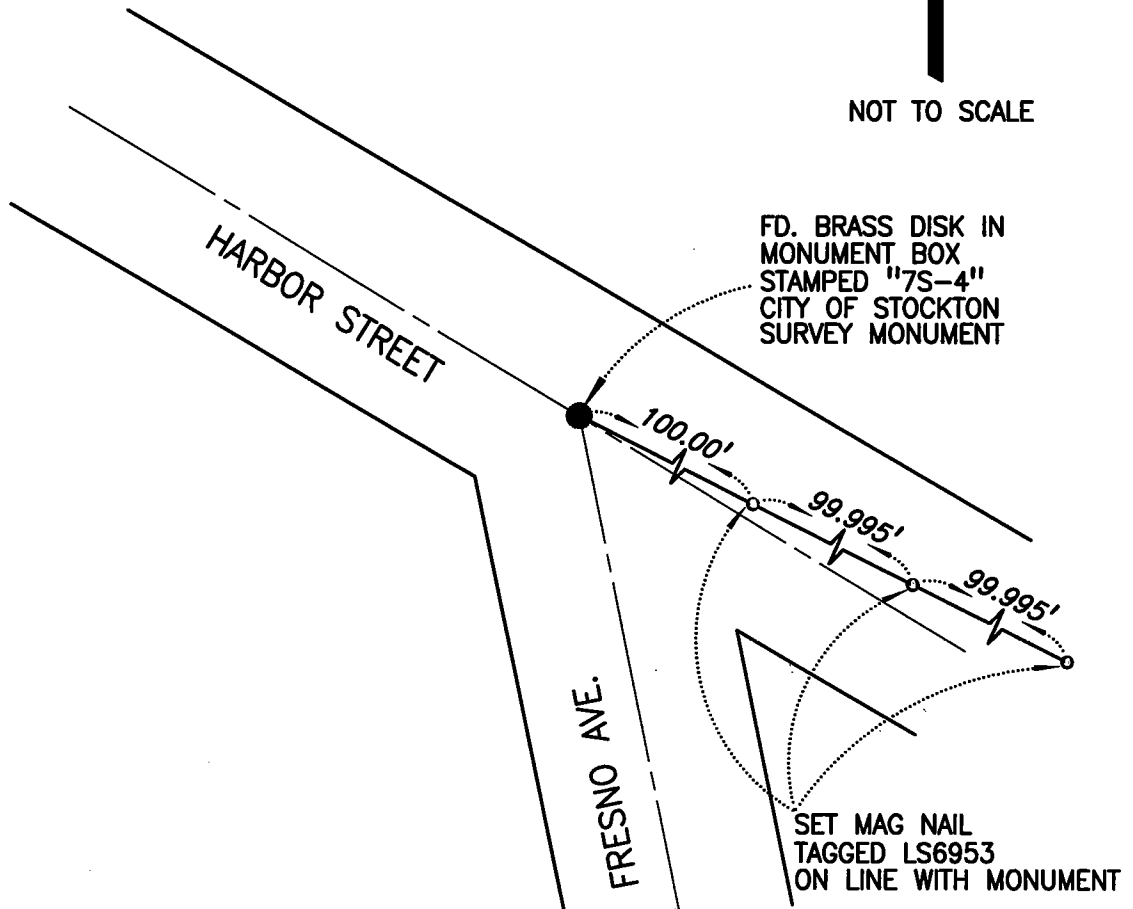
Title For County Surveyor



County Surveyor's Comment \_\_\_\_\_



NOT TO SCALE



FD. BRASS DISK IN  
MONUMENT BOX  
STAMPED "7S-4"  
CITY OF STOCKTON  
SURVEY MONUMENT

SET MAG NAIL  
TAGGED LS6953  
ON LINE WITH MONUMENT

TBM: SET CHISELED SQUARE  
AT THE NW CORNER OF THE  
INTERSECTION OF WASHINGTON ST.  
AND FRESNO AVE. AT THE  
NORTH CURB RETURN.  
ELEV. 5.48 FT.

NOTE: FOUND MONUMENT IS NOT  
VERIFIED AS BEING THE CENTERLINE  
OF THE STREET RIGHTS-OF-WAY.