

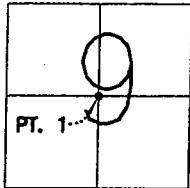
CORNER RECORD

Document Number 01-114

City of MANTECA

County of SAN JOAQUIN, California

Brief Legal Description CENTER OF SECTION 9, T.2S., R.7E., M.D.B.&M.



CORNER TYPE

Government Corner ☒ Control ☐
 Meander ☐ Property ☐
 Rancho ☐ Other ☐
 Date of Survey 8-21-01

COORDINATES (Optional)

N. _____
 E. _____
 Zone _____ NAD27 ☐ NAD83 ☐
 NAD83 Epoch _____
 Elev. _____
 Vert. Datum: NGVD29 ☐ NAVD88 ☐
 Meas. Units: Metric ☐ Imperial ☐

Corner - Left as found ☐ Found and tagged ☐ Established ☐ Reestablished ☒ Rebuilt ☐

Identification and type of corner found: Evidence used to identify or procedure used to establish or reestablished the corner:
POINT 1: BRASS DISK STAMPED R.E. 9338 IN MONUMENT BOX MARKING THE CENTER OF SECTION 9 AT
THE CENTERLINE OF WOODWARD AVENUE AS SHOWN FOR RECORD IN BOOK 35 OF MAPS AND PLATS AT
PAGE 4, SAN JOAQUIN COUNTY RECORDS WAS DESTROYED DUE TO PAVEMENT RECONSTRUCTION AND
REESTABLISHED USING THE SWING TIES SET PRIOR TO THE MONUMENT BEING DESTROYED AS SHOWN
ON PREVIOUS CORNER RECORD 01-29.

A description of the physical condition of the monument as found and as set or reset: _____
SET 2 1/2" BRASS DISK STAMPED "LS 6953 AUGUST 2001" IN MONUMENT WELL.

SURVEYOR'S STATEMENT

This Corner Record was prepared by me or under my direction in conformance with the Land Surveyors' Act on AUGUST 21, 2001.

Signed [Signature] L.S. 6953



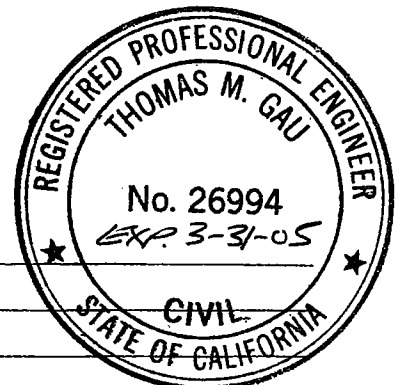
COUNTY SURVEYOR'S STATEMENT

This Corner Record was received AUGUST 23, 2001 and examined and filed September 19, 2001.

Signed [Signature] R.C.E. No. 26994

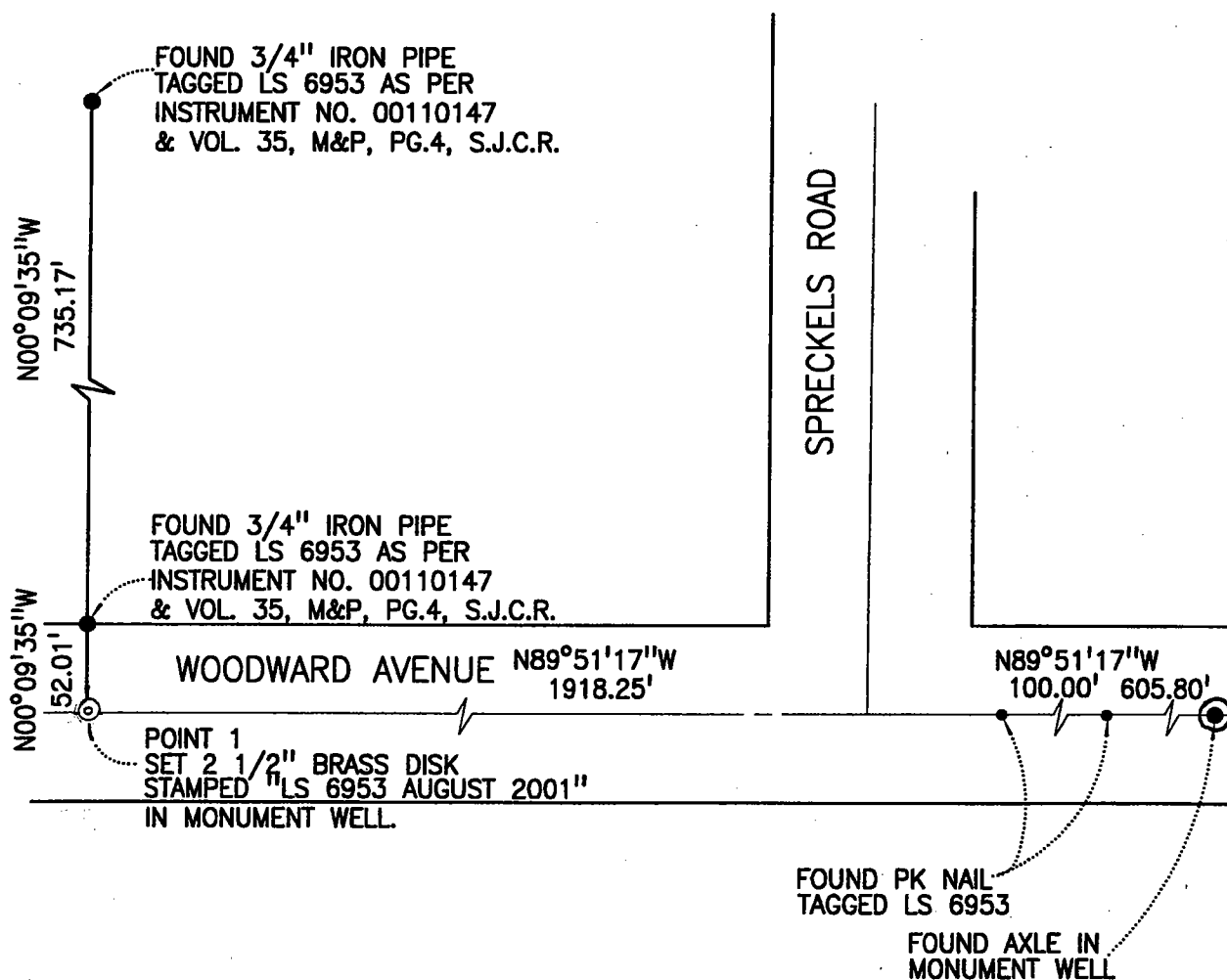
Title _____ County Surveyor

County Surveyor's Comment _____





NOT TO SCALE



NOTE: FOUND MONUMENTS ARE NOT
VERIFIED AS BEING THE CENTERLINE
OF THE STREET RIGHTS-OF-WAYS.