

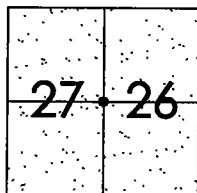
# CORNER RECORD

City of TRACY

Document Number 01-111  
County of San Joaquin, California

Brief Legal Description CHRISMAN ROAD ONE-HALF MILE S/O DURHAM FERRY ROAD

SW CORNER OF NW 1/4 OF SECTION 26, T.3S.,R.5E.



### CORNER TYPE

Government Corner  Control   
Meander  Property   
Rancho  Other

Date of Survey JULY 12, 2001

### COORDINATES (Optional)

N. \_\_\_\_\_  
E. \_\_\_\_\_  
Zone \_\_\_\_\_ NAD27  NAD83   
NAD83 Epoch \_\_\_\_\_  
Elev. \_\_\_\_\_  
Vert. Datum: NGVD29  NAVD88   
Meas. Units: Metric  Imperial

Corner - Left as found  Found and tagged  Established  Reestablished  Rebuilt

Identification and type of corner found: Evidence used to identify or procedure used to establish or reestablish the corner:  
FOUND PIN W/ YELLOW CAP STAMPED "LS 4334". CONFIRMED LOCATION PER SWING TIES ON CR-01-52. SEE SKETCH ON BACKSIDE.

A description of the physical condition of the monument as found and as set or reset:  
FOUND MONUMENT IN GOOD CONDITION. SEE SKETCH ON BACKSIDE.

### SURVEYOR'S STATEMENT

This Corner Record was prepared by me or under my direction in conformance with the Land Surveyors' Act on Sept. 14, 2001.

Signed Manuel Solerio R.C.E. Number 30890

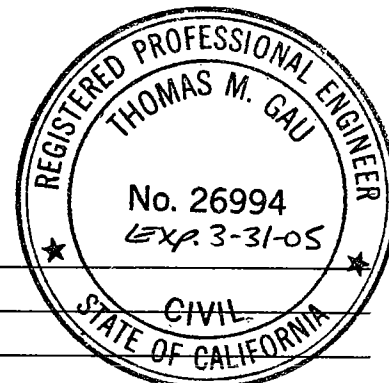


### COUNTY SURVEYOR'S STATEMENT

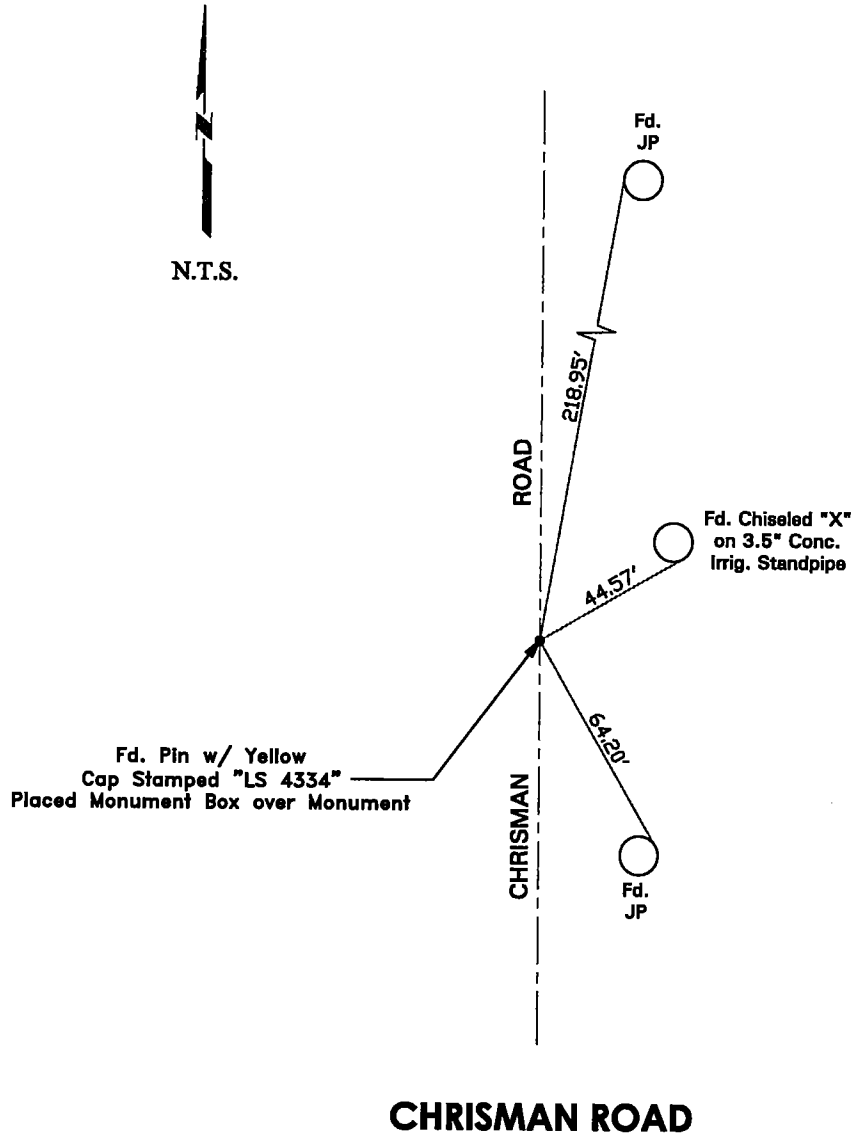
This Corner Record was received Sept. 14, 2001 and examined and filed Sept 18, 2001.

Signed Thomas M. Gau R.C.E. No. 26994

Title For County Surveyor



County Surveyor's Comment \_\_\_\_\_



"No Attempt Was Made to Verify the Monument(s)"

FP = Fence Post  
 GP = Guy Post  
 JP = Joint Pole  
 PP = Power Pole  
 SP = Service Pole  
 TP = Telephone Pole  
 N.T.S. = Not To Scale  
 Fd. = Conc. Nails with Brass Washers Stamped  
 "S.J. Co.", unless otherwise noted