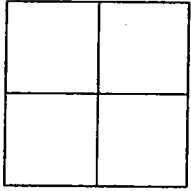


CORNER RECORD

Document Number 01-106

City of TRACY County of SAN JOAQUIN, California

Brief Legal Description W. 22nd STREET AT HOLLY DRIVE



Government Corner Control
Meander Property
Rancho Other
Date of Survey 5-29-01

COORDINATES (Optional)

N. _____
E. _____
Zone _____ NAD27 NAD83
NAD83 Epoch _____
Elev. _____
Vert. Datum: NGVD29 NAVD88
Meas. Units: Metric Imperial

Corner - Left as found Found and tagged Established Reestablished Rebuilt

Identification and type of corner found: Evidence used to identify or procedure used to establish or reestablished the corner:
CONCRETE MONUMENT IN MONUMENT WELL ON W. 22nd STREET APPROXIMATELY 29 FEET WEST OF THE CENTERLINE OF HOLLY DRIVE WAS DESTROYED DUE TO PAVEMENT RECONSTRUCTION. MONUMENT WAS RE-ESTABLISHED USING THE SWING TIES SET PRIOR TO THE MONUMENT BEING DESTROYED AS SHOWN ON PREVIOUS CORNER RECORD - 01-103.

A description of the physical condition of the monument as found and as set or reset: SET 2 1/2" BRASS DISK STAMPED "LS 6953" IN MONUMENT WELL.

This Corner Record was prepared by me or under my direction in conformance with the Land Surveyors' Act on MAY 29, 2001.

Signed [Signature] L.S. 6953



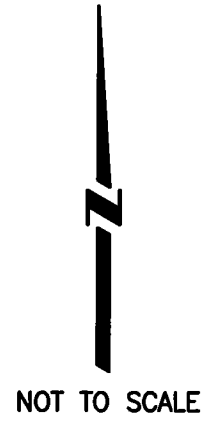
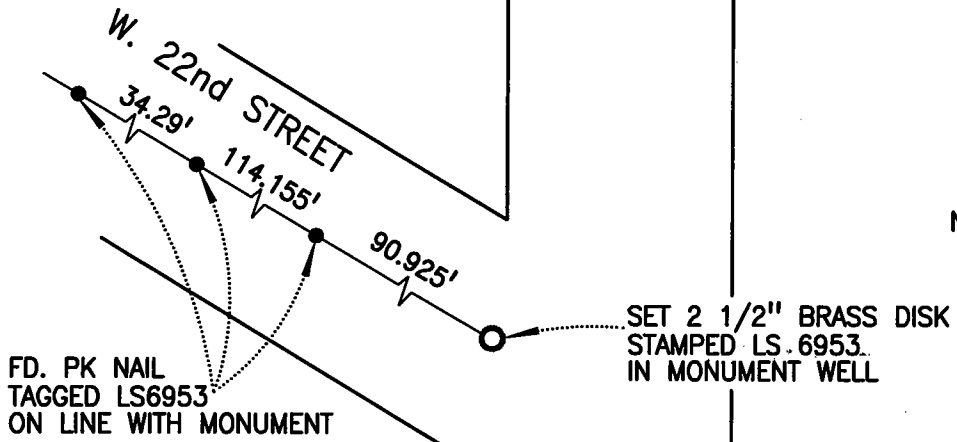
COUNTY SURVEYOR'S STATEMENT

This Corner Record was received JUNE 6, 2001 and examined and filed JUNE 13, 2001.

Signed [Signature] R.C.E. No. 28054
Title County Surveyor



County Surveyors Comment _____



HOLLY DRIVE

NOTE: SET MONUMENT IS NOT
VERIFIED AS BEING THE CENTERLINE
OF THE STREET RIGHTS-OF-WAYS.