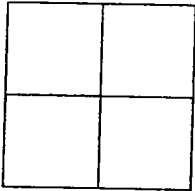


# CORNER RECORD

Document Number 01-604

City of TRACY County of SAN JOAQUIN, California

Brief Legal Description W. 22nd STREET AT HOLLY DRIVE



Government Corner  Control   
Meander  Property   
Rancho  Other   
Date of Survey 2-27-01

### COORDINATES (Optional)

N. \_\_\_\_\_  
E. \_\_\_\_\_  
Zone                      NAD27  NAD83   
NAD83 Epoch \_\_\_\_\_  
Elev. \_\_\_\_\_  
Vert. Datum: NGVD29  NAVD88   
Meas. Units: Metric  Imperial

Corner - Left as found  Found and tagged  Established  Reestablished  Rebuilt

Identification and type of corner found: Evidence used to identify or procedure used to establish or reestablished the corner:  
FOUND CONCRETE MONUMENT IN MONUMENT WELL ON W. 22nd STREET APPROXIMATELY 26 FEET WEST OF THE CENTERLINE OF HOLLY DRIVE.

A description of the physical condition of the monument as found and as set or reset:  
FOUND CONCRETE MONUMENT IN MONUMENT WELL WILL BE DESTROYED DUE TO PAVEMENT RECONSTRUCTION. SET NAILS TAGGED LS6953 AS SHOWN ON SKETCH.

This Corner Record was prepared by me or under my direction in conformance with the Land Surveyors' Act on April 4, 2001:

Signed [Signature] L.S. 6953



### COUNTY SURVEYOR'S STATEMENT

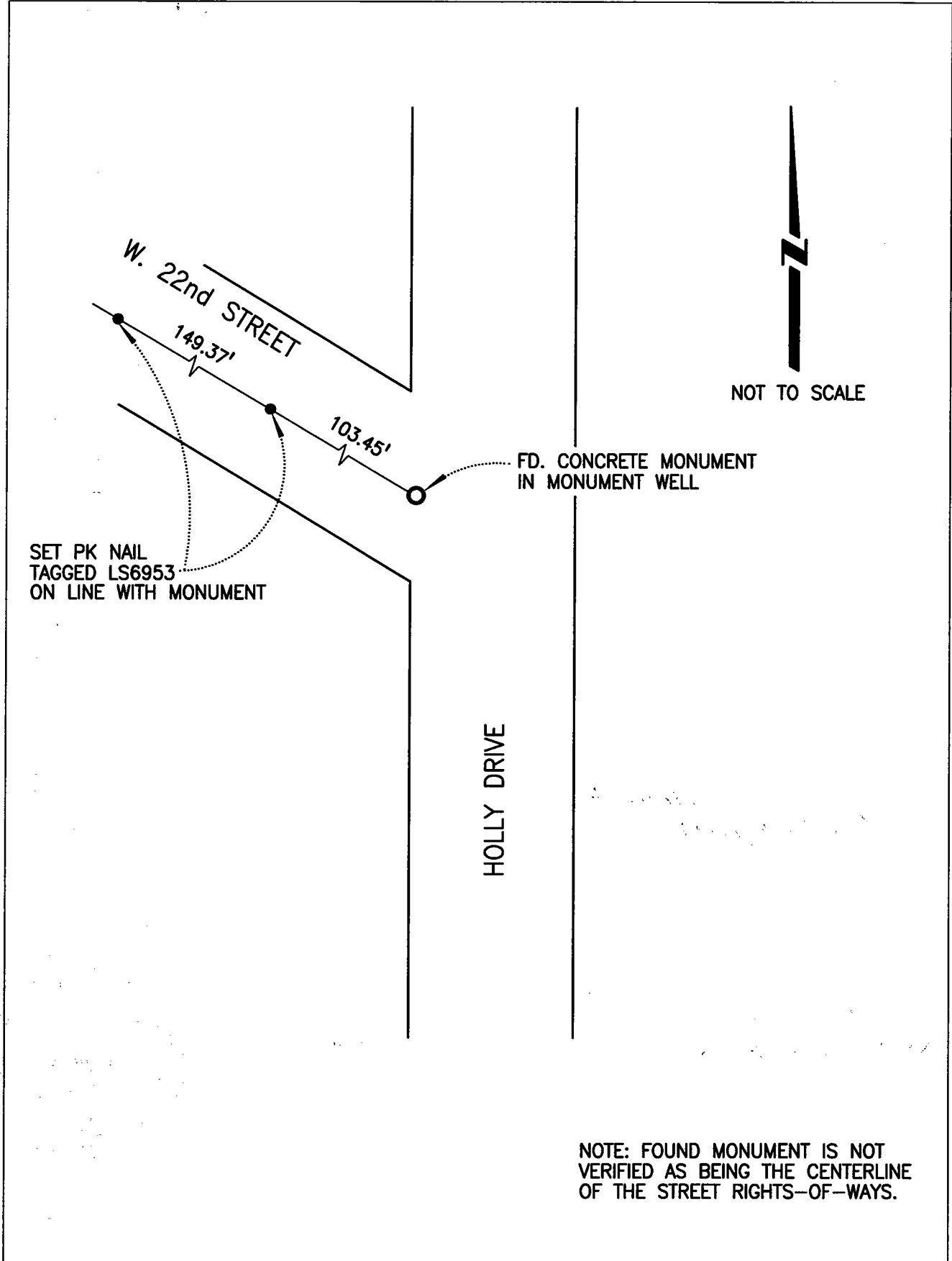
This Corner Record was received APRIL 4, 2001 and examined and filed APRIL 9, 2001.

Signed [Signature] R.C.E. No. 28054

Title County Surveyor



County Surveyors Comment \_\_\_\_\_  
\_\_\_\_\_  
\_\_\_\_\_



NOTE: FOUND MONUMENT IS NOT VERIFIED AS BEING THE CENTERLINE OF THE STREET RIGHTS-OF-WAYS.