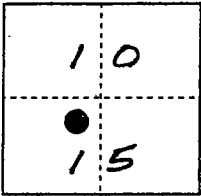


CORNER RECORD

City of Lodi

Document Number 01-89
County of San Joaquin, California

Brief Legal Description RM 15.!! = Caltrans project control survey monument.
T3N, R6E, MDB & M



CORNER TYPE

Government Corner Control
Meander Property
Rancho Other
Date of Survey 10-3-00

COORDINATES (Optional)

N. _____
E. _____
Zone _____ NAD27 NAD83
NAD83 Epoch _____
Elev. _____
Vert. Datum: NGVD29 NAVD88
Meas. Units: Metric Imperial

Corner - Left as found Found and tagged Established Reestablished Rebuilt

Identification and type of corner found: Evidence used to identify or procedure used to establish or reestablish the corner:
Found Caltrans' brass disk stamped "15.!!" in concrete at
pavement surface; project control survey monument per
ZB RS 128 M, SJCR.

A description of the physical condition of the monument as found and as set or reset:
Monument found in good condition.

SURVEYOR'S STATEMENT

This Corner Record was prepared by me or under my direction in conformance with the Land Surveyors' Act on 10-3, 2000.

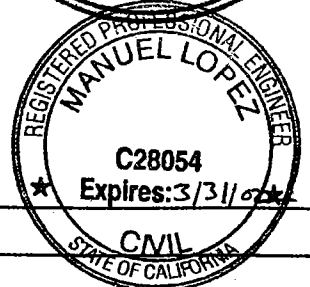
Signed Ira G. Pearson, Jr. L.S. or R.C.E. Number 7396

COUNTY SURVEYOR'S STATEMENT

This Corner Record was received FEB. 28, 2001 and examined and filed MARCH 5, 2001.

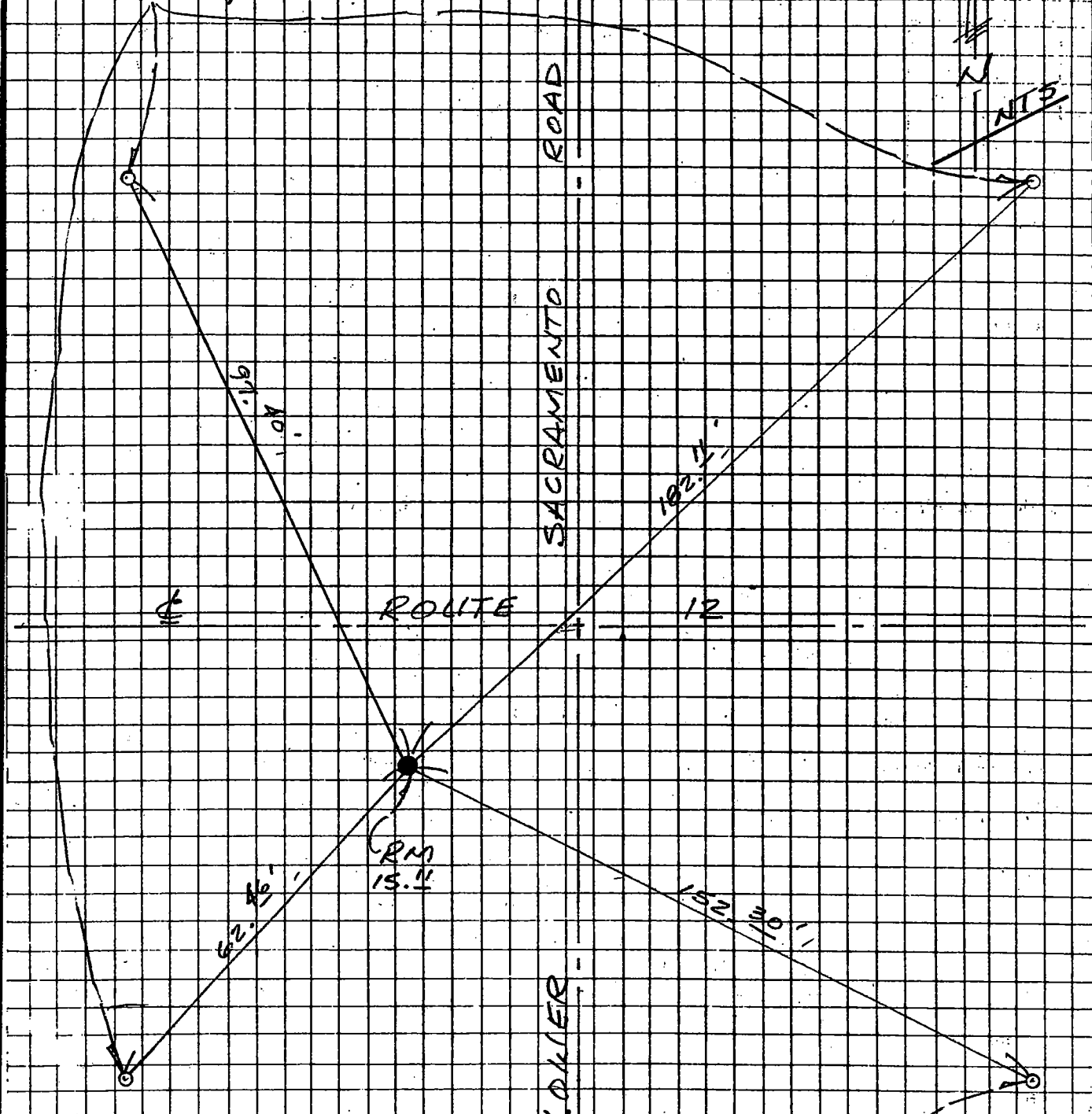
Signed Manuel Lopez R.C.E. No. 28054
Title County Surveyor

County Surveyors Comment _____



(D.D. Sheet No. 15)

Set PK nail in sidewalk joint at center of wheel chair ramp.



NOTE:
All PK swing ties are with "Caltrans" brass tag.

Set PK nail in curb joint at back of curb at MOC.