

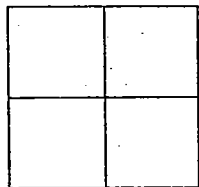
# CORNER RECORD

Document Number 01-63

City of \_\_\_\_\_

County of San Joaquin, California

Brief Legal Description ON TRACY BOULEVARD 2392± EAST OF LAMMERS ROAD



### CORNER TYPE

- Government Corner  Control
- Meander  Property
- Rancho  Other

Date of Survey NOVEMBER 27, 2000

### COORDINATES (Optional)

N. \_\_\_\_\_  
 E. \_\_\_\_\_  
 Zone \_\_\_\_\_ NAD27  NAD83   
 NAD83 Epoch \_\_\_\_\_  
 Elev. \_\_\_\_\_  
 Vert. Datum: NGVD29  NAVD88   
 Meas. Units: Metric  Imperial

Corner - Left as found  Found and tagged  Established  Reestablished  Rebuilt

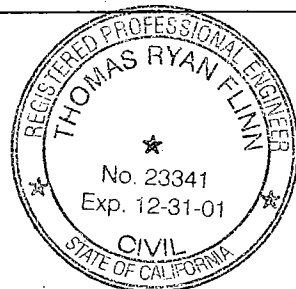
Identification and type of corner found: Evidence used to identify or procedure used to establish or reestablish the corner  
SEE SKETCH ON BACKSIDE

A description of the physical condition of the monument as found and as set or reset:  
FOUND MONUMENT IN GOOD CONDITION. SEE SKETCH ON BACKSIDE

### SURVEYOR'S STATEMENT

This Corner Record was prepared by me or under my direction in conformance with the Land Surveyors' Act on Feb 15, 2001.

Signed \_\_\_\_\_ L.S. or R.C.E. Number 23341



### COUNTY SURVEYOR'S STATEMENT

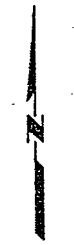
This Corner Record was received FEB. 16, 2001 and examined and filed \_\_\_\_\_, 2001.

Signed Manuel Lopez R.C.E. No. 28054  
Title \_\_\_\_\_ County Surveyor

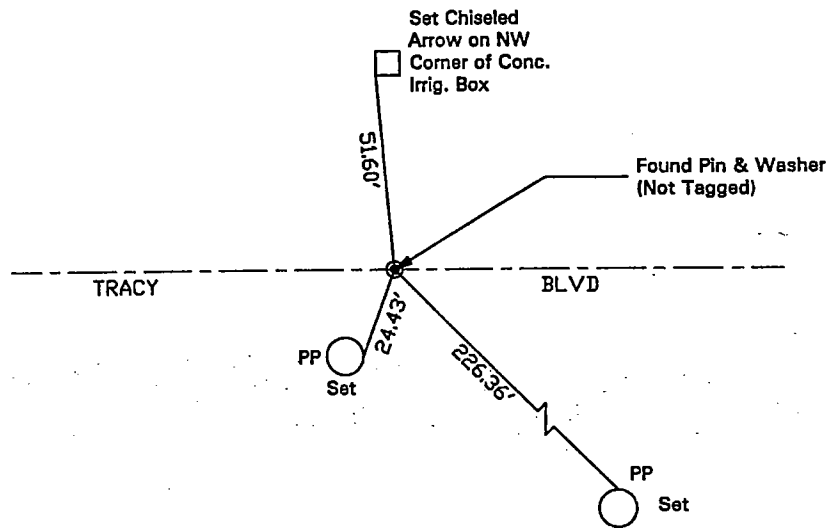


County Surveyors Comment \_\_\_\_\_

(D.D. Sheet No. 53 B)



N.T.S.



"No Attempt Was Made To Verify Monument(s)"

FP=Fence Post

GP=Guy Post

JP=Joint Pole

PP=Power Pole

SP=Service Pole

TP=Telephone Pole

N.T.S.=Not To Scale

Set=Conc. Nails with Brass Washers Stamped "S.J. Co.", unless otherwise noted