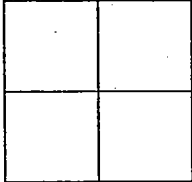


CORNER RECORD

Document Number 01-58  
County of San Joaquin, California

City of \_\_\_\_\_

Brief Legal Description ON TRACY BOULEVARD 720± NORTH OF SUGAR ROAD



CORNER TYPE

Government Corner  Control   
Meander  Property   
Rancho  Other   
Date of Survey NOVEMBER 27, 2000

COORDINATES (Optional)

N. \_\_\_\_\_  
E. \_\_\_\_\_  
Zone \_\_\_\_\_ NAD27  NAD83   
NAD83 Epoch \_\_\_\_\_  
Elev. \_\_\_\_\_  
Vert. Datum: NGVD29  NAVD88   
Meas. Units: Metric  Imperial

Corner - Left as found  Found and tagged  Established  Reestablished  Rebuilt

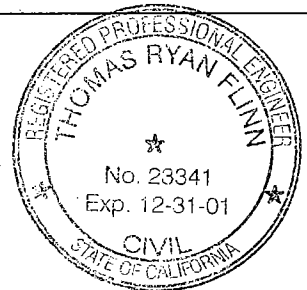
Identification and type of corner found: Evidence used to identify or procedure used to establish or reestablish the corner  
SEE SKETCH ON BACKSIDE

A description of the physical condition of the monument as found and as set or reset:  
FOUND MONUMENT IN GOOD CONDITION. SEE SKETCH ON BACKSIDE

SURVEYOR'S STATEMENT

This Corner Record was prepared by me or under my direction in conformance with the Land Surveyors' Act on Feb 15, 2001.

Signed \_\_\_\_\_ L.S. or R.C.E. Number 23341



COUNTY SURVEYOR'S STATEMENT

This Corner Record was received FEB. 16, 2001 and examined and filed \_\_\_\_\_, 2001.

Signed Manuel Lopez R.C.E. No. 28054  
Title County Surveyor

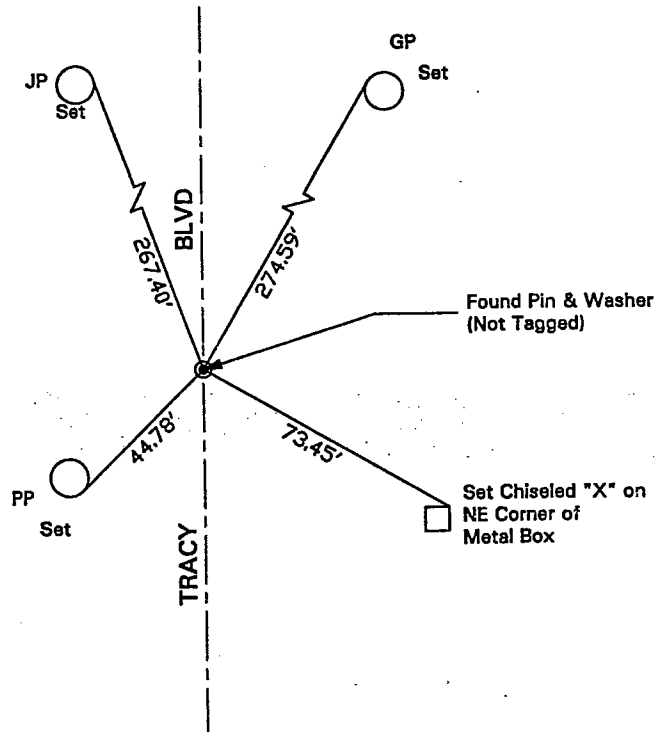


County Surveyors Comment \_\_\_\_\_

(D.D. Sheet No. 53 B)



N.T.S.



"No Attempt Was Made To Verify Monument(s)"

FP=Fence Post

GP=Guy Post

JP=Joint Pole

PP=Power Pole

SP=Service Pole

TP=Telephone Pole

N.T.S.=Not To Scale

Set=Conc. Nails with Brass Washers Stamped "S.J. Co.", unless otherwise noted