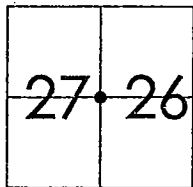


CORNER RECORD

Document Number 01-52
County of San Joaquin, California

City of _____

Brief Legal Description NE CORNER OF SE QUARTER OF SECTION 27, T.3S.,R.5E.



T.3S.,R.5E

CORNER TYPE

- Government Corner Control
Meander Property
Rancho Other

Date of Survey NOVEMBER 17, 2000

COORDINATES (Optional)

N. _____
E. _____
Zone _____ NAD27 NAD83
NAD83 Epoch _____
Elev. _____
Vert. Datum: NGVD29 NAVD88
Meas. Units: Metric Imperial

Cornor - Left as found Found and tagged Established Reestablished Rebuilt

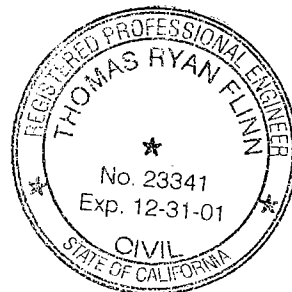
Identification and type of corner found: Evidence used to identify or procedure used to establish or reestablish the corner
SEE SKETCH ON BACKSIDE

A description of the physical condition of the monument as found and as set or reset:
FOUND MONUMENT IN GOOD CONDITION. SEE SKETCH ON BACKSIDE

SURVEYOR'S STATEMENT

This Corner Record was prepared by me or under my direction in conformance with the Land Surveyors' Act on 1 Feb, 2001.

Signed [Signature] L.S. or R.C.E. Number 23341

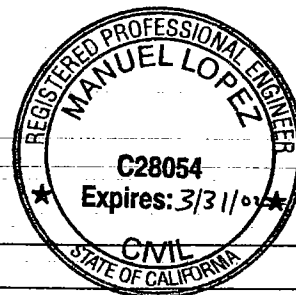


COUNTY SURVEYOR'S STATEMENT

This Corner Record was received Feb. 2, 2001 and examined and filed Feb. 5, 2001.

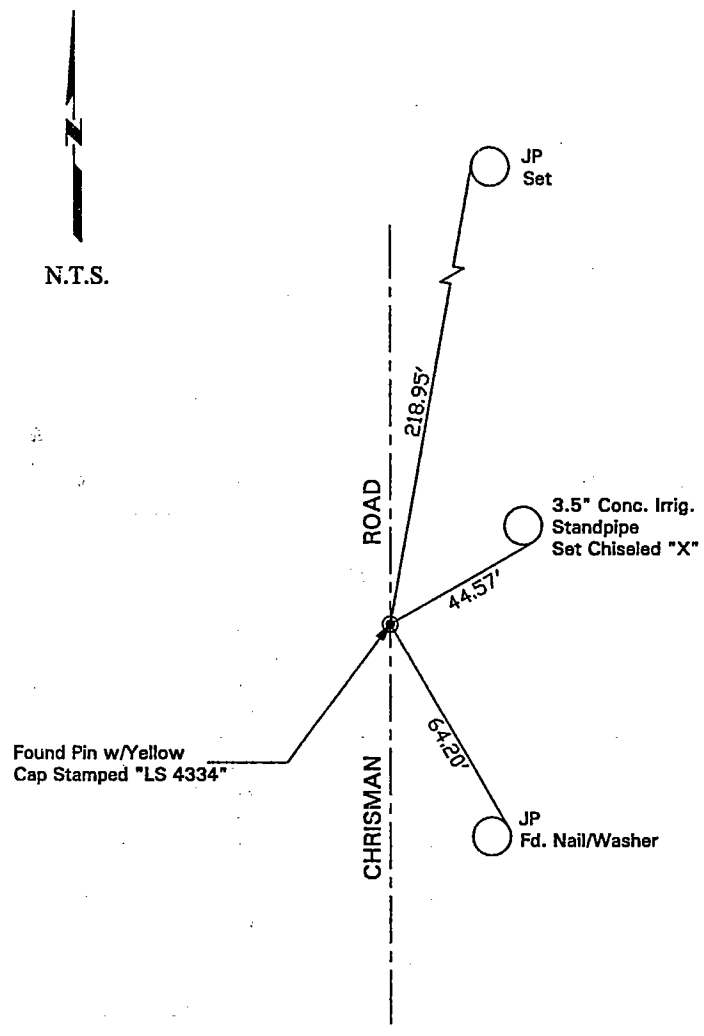
Signed Manuel Lopez R.C.E. No. 28054

Title County Surveyor



County Surveyors Comment _____

(D.D. Sheet No. 68)



"No Attempt Was Made To Verify Monument(s)"

- FP=Fence Post
- GP=Guy Post
- JP=Joint Pole
- PP=Power Pole
- SP=Service Pole
- TP=Telephone Pole
- N.T.S.=Not To Scale
- Set=Conc. Nails with Brass Washers Stamped "S.J. Co.", unless otherwise noted