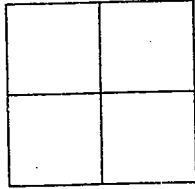


CORNER RECORD

Document Number 01-39
County of San Joaquin, California

City of _____

Brief Legal Description INTERSECTION OF FIG AVENUE AND OLEANDER AVENUE



CORNER TYPE

Government Corner Control
Meander Property
Rancho Other
Date of Survey OCTOBER 20, 2000

COORDINATES (Optional)

N. _____
E. _____
Zone _____ NAD27 NAD83
NAD83 Epoch _____
Elev. _____
Vert. Datum: NGVD29 NAVD88
Meas. Units: Metric Imperial

Corner - Left as found Found and tagged Established Reestablished Rebuilt

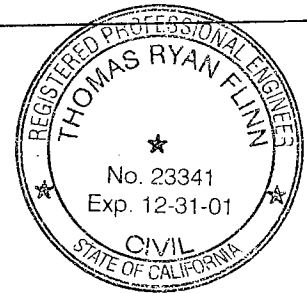
Identification and type of corner found: Evidence used to identify or procedure used to establish or reestablish the corner
SEE SKETCH ON BACKSIDE

A description of the physical condition of the monument as found and as set or reset:
FOUND MONUMENT IN GOOD CONDITION. SEE SKETCH ON BACKSIDE

SURVEYOR'S STATEMENT

This Corner Record was prepared by me or under my direction in conformance with the Land Surveyors' Act on Jan 24, 2001.

Signed [Signature] L.S. or R.C.E. Number 23341



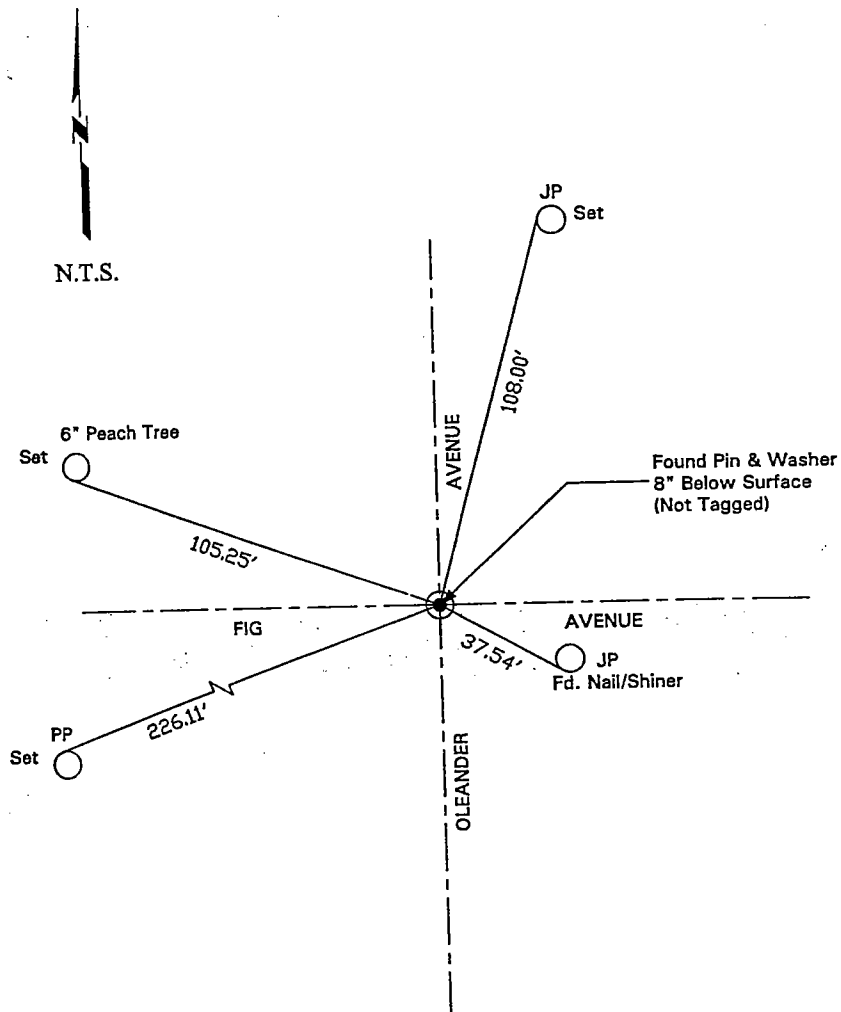
COUNTY SURVEYOR'S STATEMENT

This Corner Record was received JAN. 25, 2001 and examined and filed JAN. 29, 2001.

Signed [Signature] R.C.E. No. 28054
Title County Surveyor

County Surveyors Comment _____

(D.D. Sheet No. 58)



"No Attempt Was Made To Verify Monument(s)"

FP=Fence Post

GP=Guy Post

JP=Joint Pole

PP=Power Pole

SP=Service Pole

TP=Telephone Pole

N.T.S.=Not To Scale

Set=Conc. Nails with Brass Washers Stamped "S.J. Co. Pub. Works", unless otherwise noted