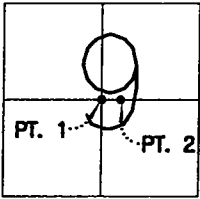


CORNER RECORD

Document Number 01-29

City of MANTECA County of SAN JOAQUIN, California

Brief Legal Description BOOK 35 OF MAPS AND PLATS, PAGE 4, SAN JOAQUIN COUNTY RECORDS.  
CERTIFICATE OF CORRECTION, INSTRUMENT NO. 00110147, SAN JOAQUIN COUNTY RECORDS.



T.2 S., R. 7 E.,  
M.D.B.&M.

CORNER TYPE

Government Corner  Control   
Meander  Property   
Rancho  Other   
Date of Survey 12-19-00

COORDINATES (Optional)

N. \_\_\_\_\_  
E. \_\_\_\_\_  
Zone \_\_\_\_\_ NAD27  NAD83   
NAD83 Epoch \_\_\_\_\_  
Elev. \_\_\_\_\_  
Vert. Datum: NGVD29  NAVD88   
Meas. Units: Metric  Imperial

Corner - Left as found  Found and tagged  Established  Reestablished  Rebuilt

Identification and type of corner found: Evidence used to identify or procedure used to establish or reestablished the corner:  
POINT 1: FOUND BRASS DISK STAMPED R.E. 9338 IN MONUMENT BOX MARKING THE CENTER OF SECTION  
9 AT THE CENTERLINE OF WOODWARD AVENUE AS SHOWN FOR RECORD IN BOOK 35 OF MAPS AND  
PLATS AT PAGE 4, SAN JOAQUIN COUNTY RECORDS.

POINT 2: FOUND NAIL AT THE INTERSECTION OF SPRECKELS ROAD AND WOODWARD AVENUE AS SHOWN  
FOR RECORD IN BOOK 35 OF MAPS AND PLATS AT PAGE 4, SAN JOAQUIN COUNTY RECORDS.

A description of the physical condition of the monument as found and as set or reset: \_\_\_\_\_  
THE MONUMENTS WILL BE DESTROYED DUE TO THE ROADWAY CONSTRUCTION ON WOODWARD AVENUE AND  
SPRECKELS ROAD.

SURVEYOR'S STATEMENT

This Corner Record was prepared by me or under my direction in conformance with the Land Surveyors' Act on DECEMBER 28, 2000.

Signed [Signature] L.S. Number 6953



COUNTY SURVEYOR'S STATEMENT

This Corner Record was received JANUARY 16, 2001 and examined and filed Jan 18, 2001.

Signed [Signature] R.C.E. No. 28054

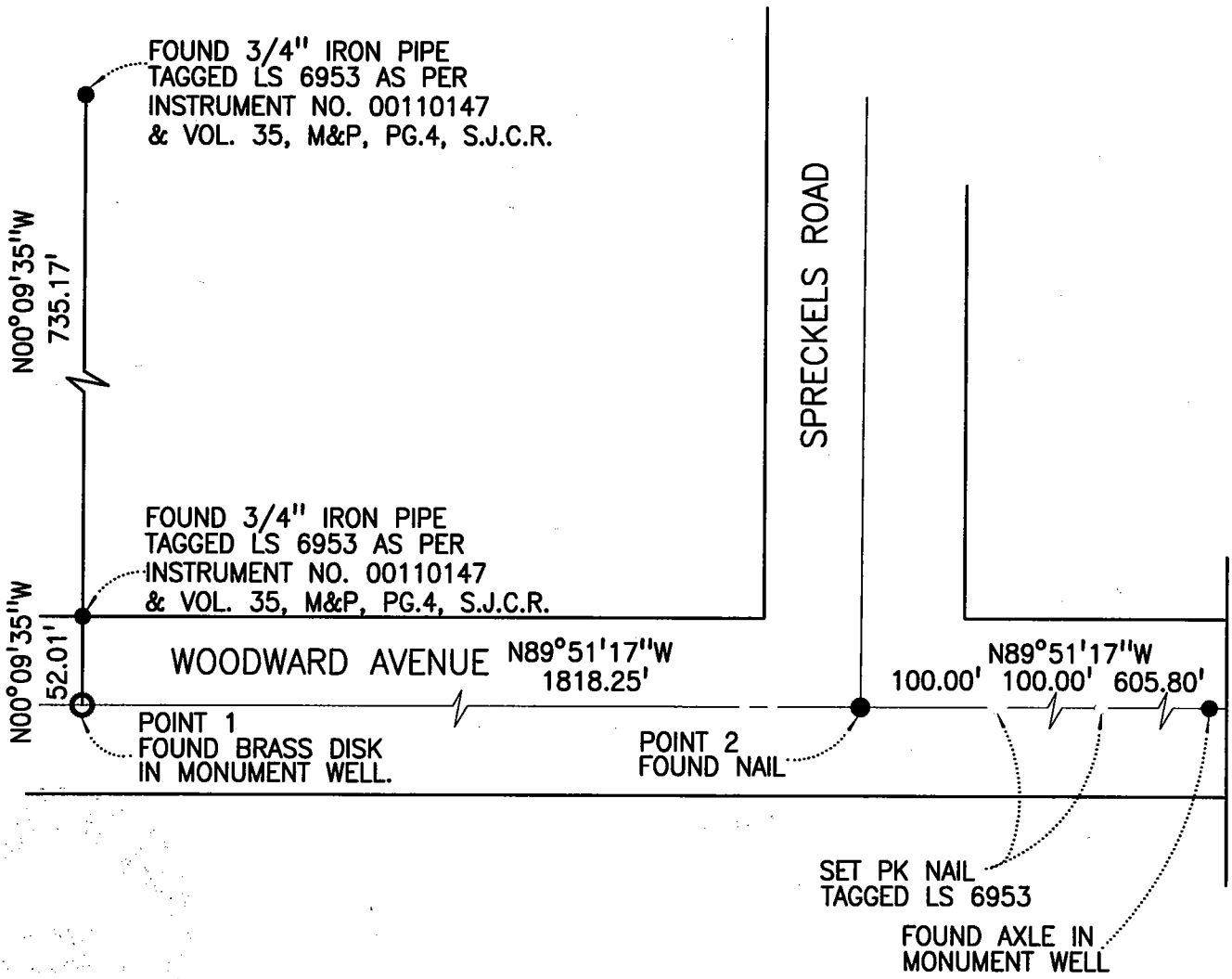
Title County Surveyor



County Surveyor's Comment \_\_\_\_\_



NOT TO SCALE



NOTE: FOUND MONUMENTS ARE NOT VERIFIED AS BEING THE CENTERLINE OF THE STREET RIGHTS-OF-WAYS.