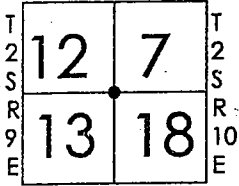


CORNER RECORD

Document Number 01-24
 County of San Joaquin, California

City of _____

Brief Legal Description SE CORNER OF SECTION 12, T.2S., R.9E.



CORNER TYPE

Government Corner Control
 Meander Property
 Rancho Other
 Date of Survey OCTOBER 2000

COORDINATES (Optional)

N. _____
 E. _____
 Zone NAD27 NAD83
 NAD83 Epoch _____
 Elev. _____
 Vert. Datum: NGVD29 NAVD88
 Meas. Units: Metric Imperial

Corner - Left as found Found and tagged Established Reestablished Rebuilt

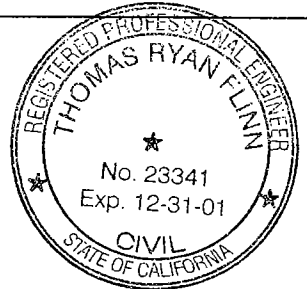
Identification and type of corner found: Evidence used to identify or procedure used to establish or reestablish the corner
SEE SKETCH ON BACKSIDE.

A description of the physical condition of the monument as found and as set or reset:
FOUND MONUMENT IN GOOD CONDITION. SEE SKETCH ON BACKSIDE

SURVEYOR'S STATEMENT

This Corner Record was prepared by me or under my direction in conformance with the Land Surveyors' Act on Jan 9, 2001.

Signed _____ L.S. or R.C.E. Number 23341



COUNTY SURVEYOR'S STATEMENT

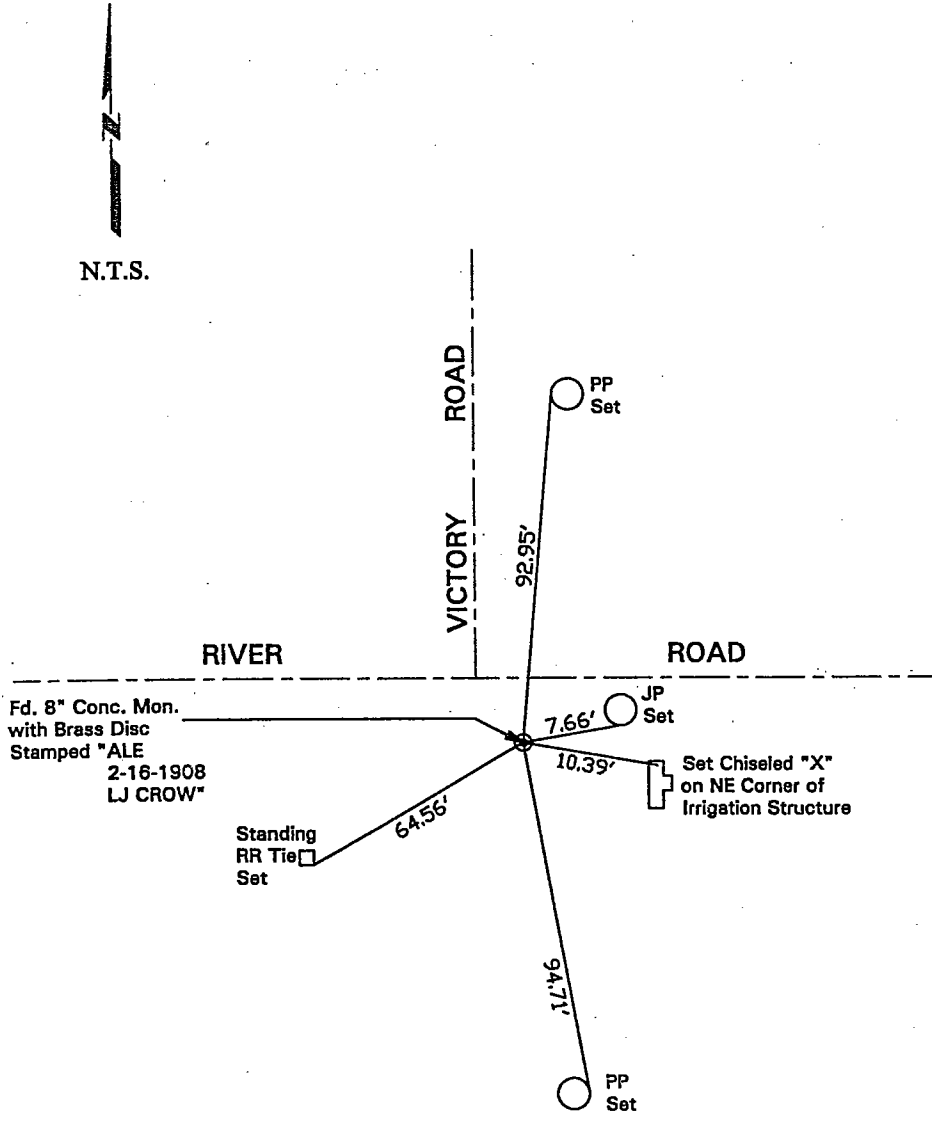
This Corner Record was received 1-9, 2001 and examined and filed Jan 13, 2001.

Signed Manuel Lopez R.C.E. No. 28054
 Title County Surveyor



County Surveyors Comment _____

(D.D. Sheet No. 63)



"No Attempt Was Made To Verify Monument(s)"

FP=Fence Post

GP=Guy Post

JP=Joint Pole

PP=Power Pole

SP=Service Pole

TP=Telephone Pole

N.T.S.=Not To Scale

Set=Conc. Nails with Brass Washers Stamped "S.J. Co.", unless otherwise noted