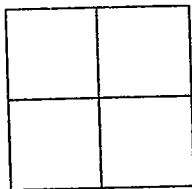


# CORNER RECORD

Document Number 01-23  
 County of San Joaquin, California

City of \_\_\_\_\_

Brief Legal Description ON ELLIOTT ROAD 165± SOUTHEAST OF LAIRD ROAD



### CORNER TYPE

- Government Corner  Control   
 Meander  Property   
 Rancho  Other

Date of Survey NOVEMBER 2000

### COORDINATES (Optional)

N. \_\_\_\_\_  
 E. \_\_\_\_\_  
 Zone \_\_\_\_\_ NAD27  NAD83   
 NAD83 Epoch \_\_\_\_\_  
 Elev. \_\_\_\_\_  
 Vert. Datum: NGVD29  NAVD88   
 Meas. Units: Metric  Imperial

Corner - Left as found  Found and tagged  Established  Reestablished  Rebuilt

Identification and type of corner found: Evidence used to identify or procedure used to establish or reestablish the corner  
SEE SKETCH ON BACKSIDE

A description of the physical condition of the monument as found and as set or reset:  
FOUND MONUMENT IN GOOD CONDITION. SEE SKETCH ON BACKSIDE

### SURVEYOR'S STATEMENT

This Corner Record was prepared by me or under my direction in conformance with the Land Surveyors' Act on Jan 9, 2001.

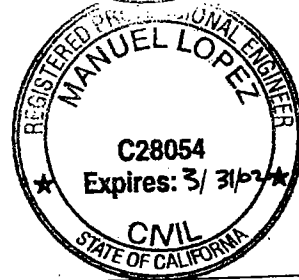
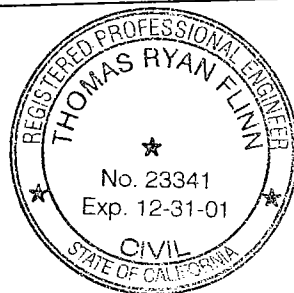
Signed \_\_\_\_\_ L.S. or R.C.E. Number 23341

### COUNTY SURVEYOR'S STATEMENT

This Corner Record was received 1-9, 2001 and examined and filed Jan 13, 2001.

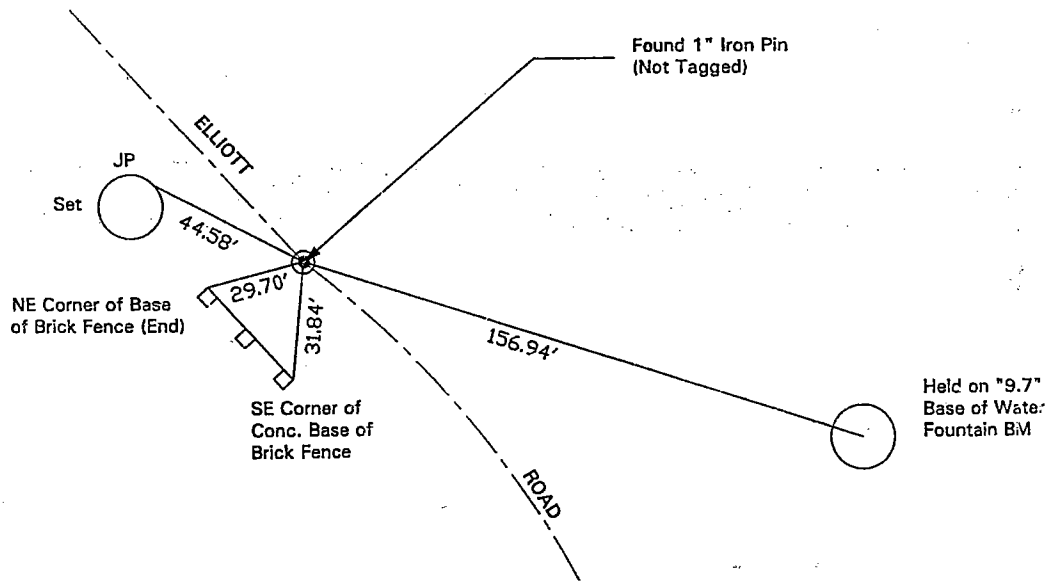
Signed Manuel Lopez R.C.E. No. 28054  
 Title County Surveyor

County Surveyors Comment \_\_\_\_\_





N.T.S.



"No Attempt Was Made To Verify Monument(s)"

FP=Fence Post

GP=Guy Post

JP=Joint Pole

PP=Power Pole

SP=Service Pole

TP=Telephone Pole

N.T.S.=Not To Scale

Set=Conc. Nails with Brass Washers Stamped "S.J. Co.", unless otherwise noted